



easybuid

ASSEMBLY INSTRUCTIONS



Watch Video



## 2 BEFORE YOU BEGIN

THANK YOU FOR PURCHASING YOUR EASYBUILD POLYTUNNEL

BEFORE YOU BEGIN TO BUILD, WE RECOMMEND ENSURING ALL PARTS ARE PRESENT AND HAVING A THOROUGH READ OF THE INSTRUCTIONS.

YOUR HEALTH AND SAFETY IS IMPORTANT TO US, PLEASE TAKE CARE WHEN CONSTRUCTING YOUR POLYTUNNEL

NEED HELP OR ADVICE ALONG THE WAY?

CALL OUR TEAM ON 01282 873120  
EMAIL [INFO@NPSTRUCTURES.CO.UK](mailto:INFO@NPSTRUCTURES.CO.UK)

FAILURE TO FOLLOW THESE INSTRUCTIONS MAY COMPROMISE THE STRUCTURAL INTEGRITY OF YOUR POLYTUNNEL.

NP STRUCTURES LTD ACCEPTS NO LIABILITY FOR DAMAGE RESULTING FROM USE NOT IN ACCORDANCE WITH THESE INSTRUCTIONS.



### TOOLS

#### SUPPLIED

4MM ALLEN KEY  
5MM ALLEN KEY  
TEX SCREW BIT  
SCREW ANCHOR INSERTION BAR



#### REQUIRED

SPADE  
WIRE CUTTERS  
STRING  
SPIRIT LEVEL  
TAPE MEASURE  
STANLEY KNIFE  
SCISSORS  
LADDERS  
DRILL  
13MM SPANNER OR SOCKET  
HAMMER  
MARKING STICKS/CANES  
  
10MM MASONARY DRILL BIT  
(BASE PLATES ONLY)



**Prefer to watch?** Follow along with our video guide for visual instructions to make building your EasyBuild polytunnel even easier.

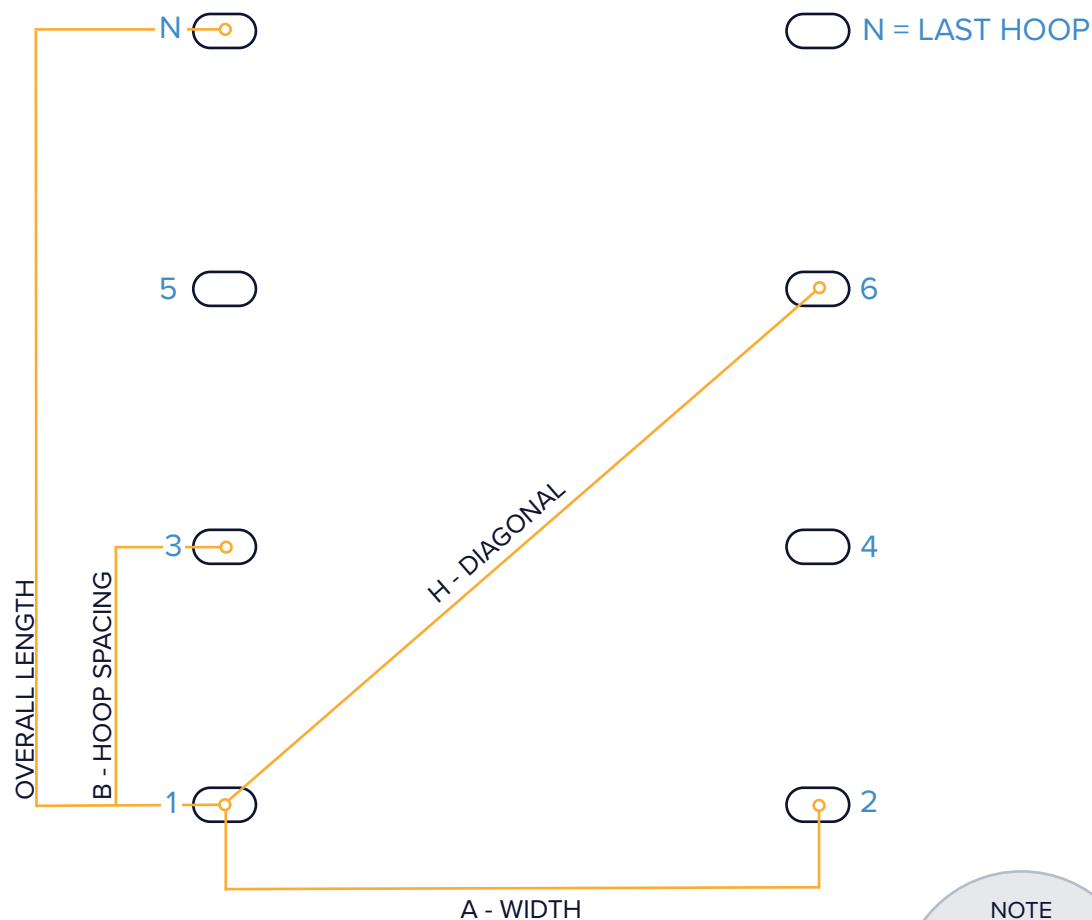
FOUNDATIONS .....	4
BASE RAILS .....	7
HOOPS .....	10
RIDGE BARS .....	11
CORNER BRACING .....	12
DOOR FRAMES TOP .....	14
DOOR FRAMES BOTTOM (SOIL) .....	15
DOOR FRAMES BOTTOM (BASE PLATES) .....	19
BRACE BARS .....	22
SIDE VENTILATION .....	23
COVERING (BASE RAIL) .....	26
COVERING (TRENCHED ONLY) .....	32
SLIDING DOOR .....	36
DOOR FITTING .....	39
DOUBLE DOORS .....	41
PVC DOOR .....	42

4 FOUNDATIONS

TOOLS NEEDED: TAPE MEASURE, STRING, SPIRIT LEVEL, MARKERS/CANES

USE THIS TABLE TO HELP YOU PLACE YOUR FOUNDATIONS

DIAGRAM FOR ILLUSTRATIVE PURPOSES ONLY, REAPEAT THE PROCESS FOR THE NUMBER OF HOOPS YOU HAVE ORDERED (1 PER 1.5M INCREMENT)



NOTE  
ALL MEASUREMENTS  
ARE TAKEN FROM  
THE CENTRE OF THE  
TUBE

TUNNEL WIDTH	A WIDTH CENTRE TO CENTRE	B HOOP SPACING CENTRE TO CENTRE	H DIAGONAL CENTRE TO CENTRE
2.5M	2550MM	1500MM	3937MM
3M	3050MM	1500MM	4278MM
3.5M	3550MM	1500MM	4648MM
4M	4050MM	1500MM	5040MM
4.5M	4550MM	1500MM	5450MM



# METHOD:

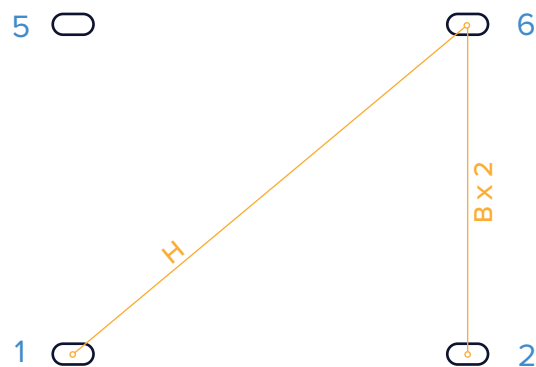
YOU MAY WISH TO MARK OUT YOUR FOUNDATION PLACEMENT WITH MARKERS OR STAKES BEFORE POSITIONING THE ACTUAL FOUNDATIONS.



## 1. POSITION FOUNDATIONS 1 & 2

CHECK **A** IS CORRECT

CHECK ALIGNMENT OF THE TWO HOOPS

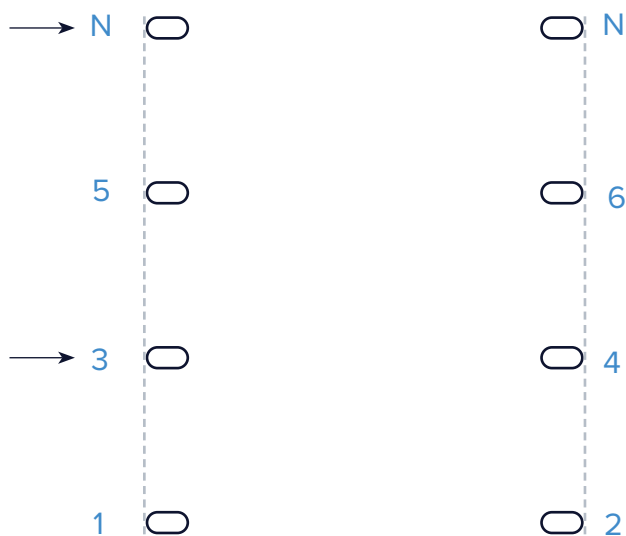


## 2. POSITION FOUNDATION 6

CHECK **H** IS CORRECT

CHECK **B** IS CORRECT (SHOULD EQUAL  $B \times 2$ )

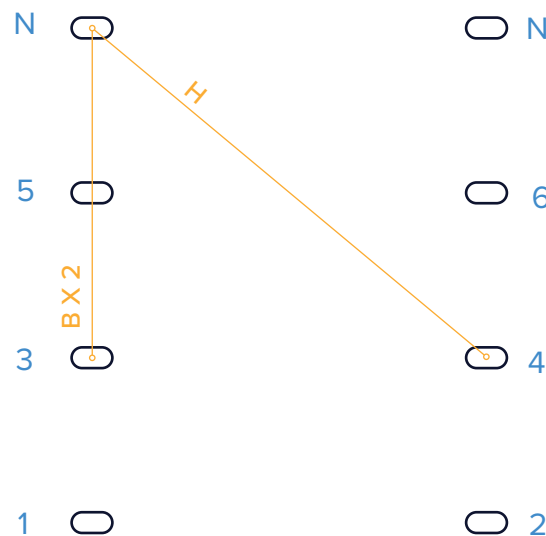
REPEAT FOR FOUNDATION 5



## 3. STRINGLINE THE LENGTH OF THE TUNNEL FROM 1 & 2 TO **N** (LAST FOUNDATIONS)

THE STRINGLINE SHOULD TOUCH THE OUTER EDGE OF YOUR FOUNDATION TUBES

USE THE STRINGLINE TO HELP YOU PLACE YOUR LAST FOUNDATIONS (**N**) AS WELL AS ANY OTHER FOUNDATIONS (IE. 3 & 4)



## 4. CHECK ALIGNMENT OF THE FAR END OF YOUR POLYTUNNEL:

CHECK **H** IS CORRECT

CHECK **B** IS CORRECT

REPEAT ON EACH END FOUNDATION

## 6 FOUNDATIONS (CONTINUED)

### TOOLS NEEDED:

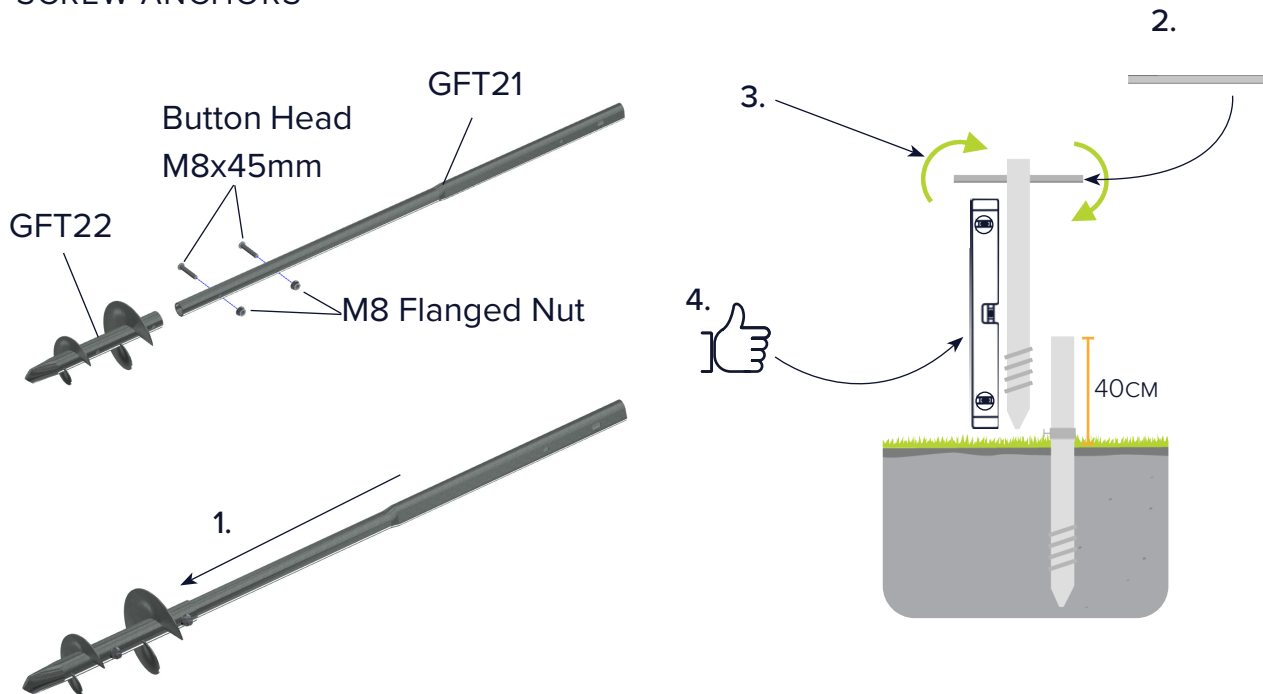
SCREW ANCHORS - SPIRIT LEVEL, TAPE MEASURE, SCREW ANCHOR INSERTION BAR

BASE PLATES - DRILL, 10MM MASONRY DRILL BIT, HAMMER & 1 X 13MM SPANNER/SOCKET

CONCRETE GROUND TUBES - SPADE, CONCRETE/POSTCRETE, SPIRIT LEVEL & TAPE MEASURE

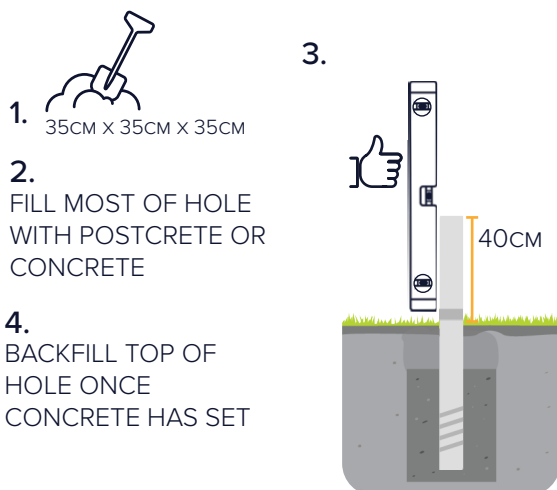
SET YOUR FOUNDATIONS USING THE METHOD BELOW.

### SCREW ANCHORS

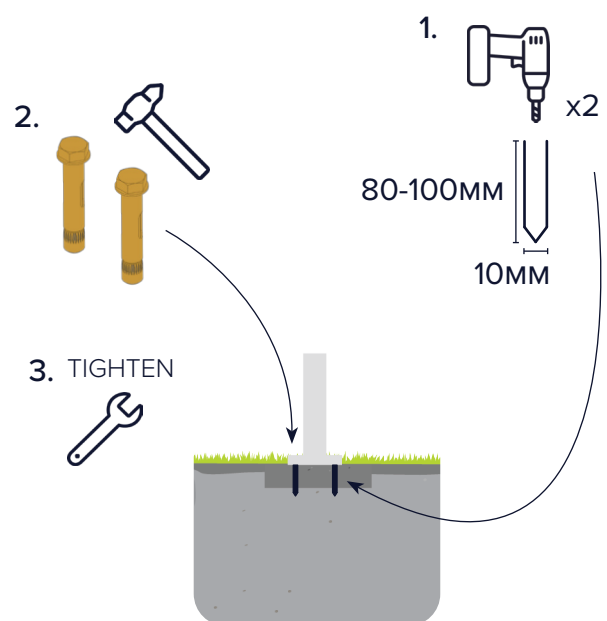


### CONCRETE FOUNDATION

SCREW ANCHORS CAN BE CONCRETED INTO THE GROUND



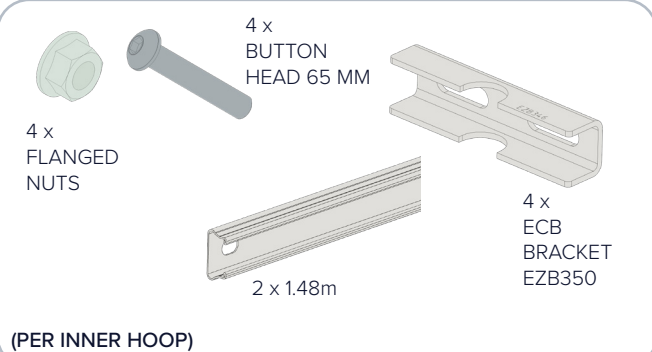
### BASE PLATES



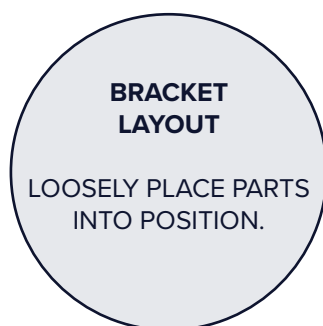
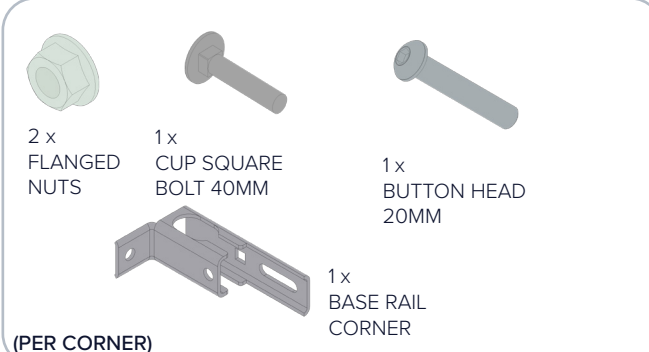
TOOLS NEEDED: SPIRIT LEVEL, 1 X 13MM SPANNER/SOCKET, ALLEN KEY

PACKS NEEDED: EZB203, EZB202

## INNER HOOPS = A



## END HOOPS = B

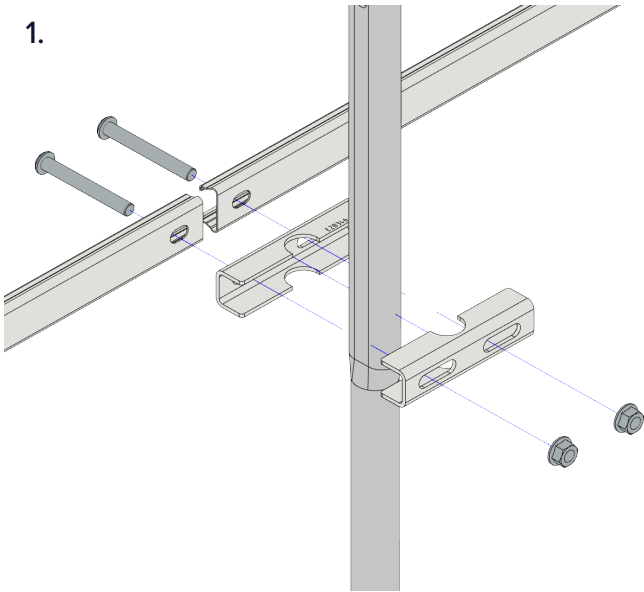




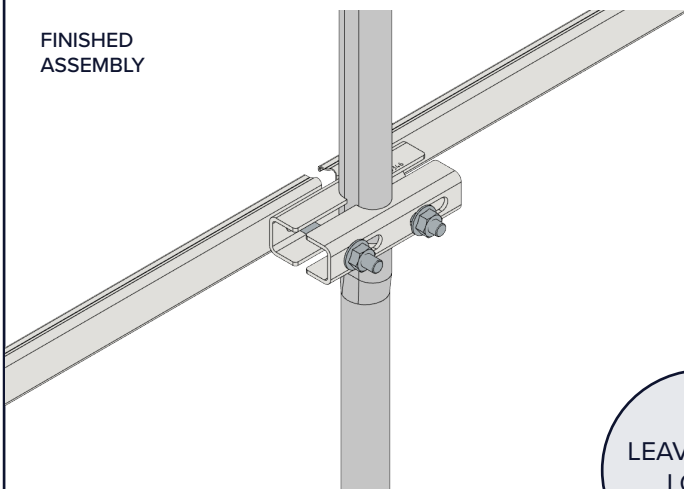
## 8 BASE RAILS (CONTINUED)

### INNER HOOPS = A

1.



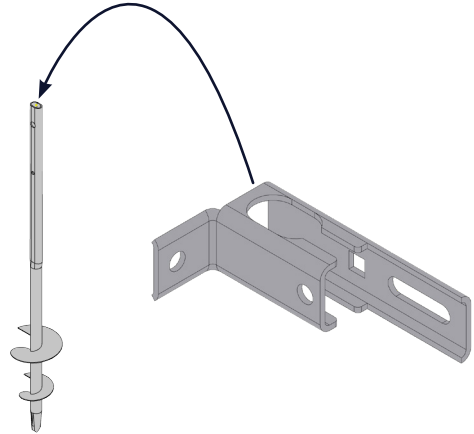
FINISHED  
ASSEMBLY



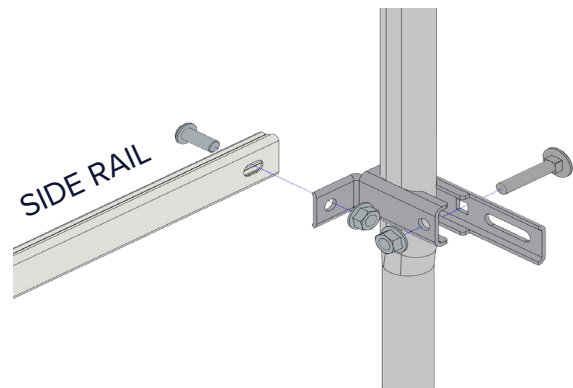
REPEAT FOR ALL INNER HOOPS

### END HOOPS = B

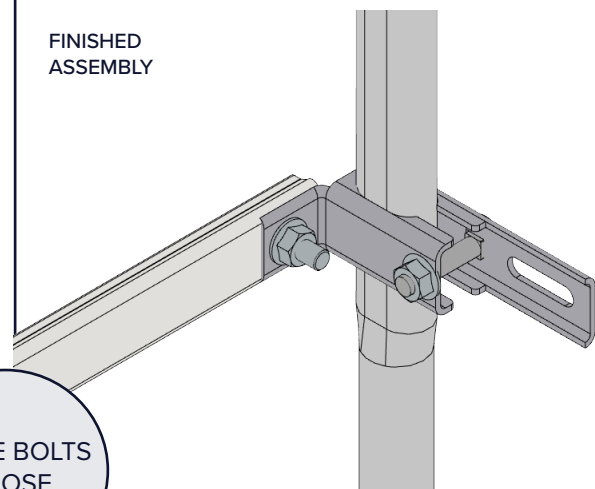
1.



2.



FINISHED  
ASSEMBLY



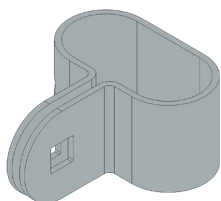
LEAVE BOLTS  
LOOSE

REPEAT FOR ALL END HOOPS

TOOLS NEEDED: SPIRIT LEVEL

PACKS NEEDED: EZB200

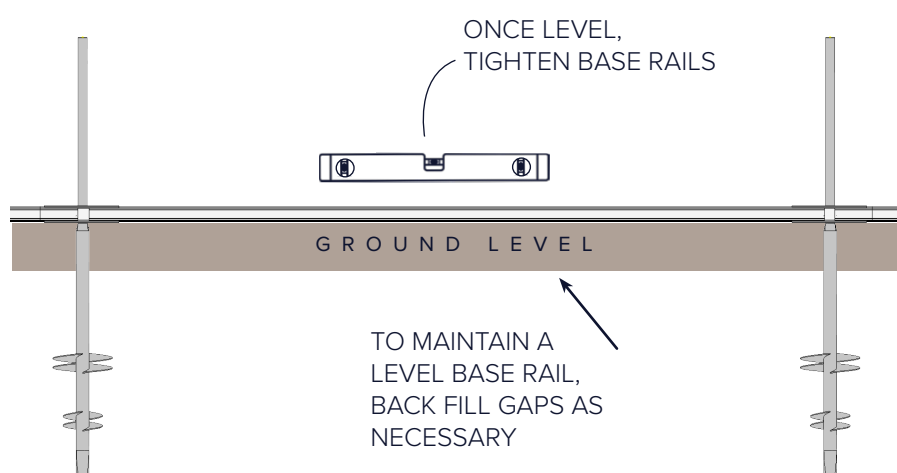
4 x  
KEYHOLE  
CLAMPS



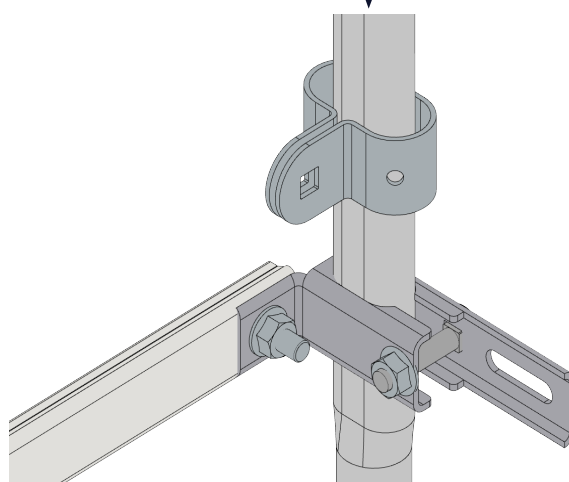
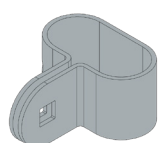
## NOTE

MAINTAINING A  
LEVEL BASERAIL IS  
ONLY OF PARTICULAR  
IMPORTANCE IF YOU  
HAVE SIDE  
VENTILATION

1.



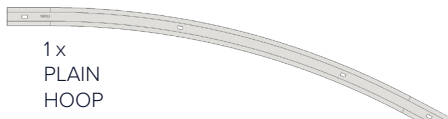
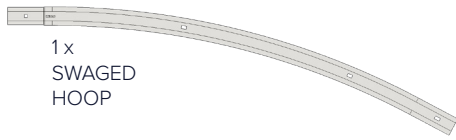
2.



ADD KEYHOLE CLAMPS TO ALL  
END HOOPS  
(USED TO FIX CORNER BRACING LATER)

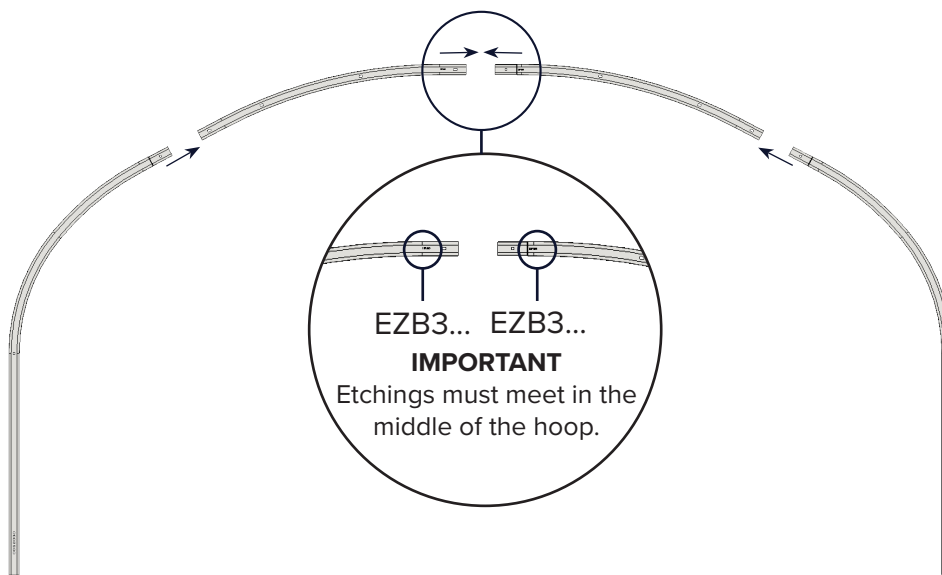
## 10 HOOPS

TOOLS NEEDED: NONE

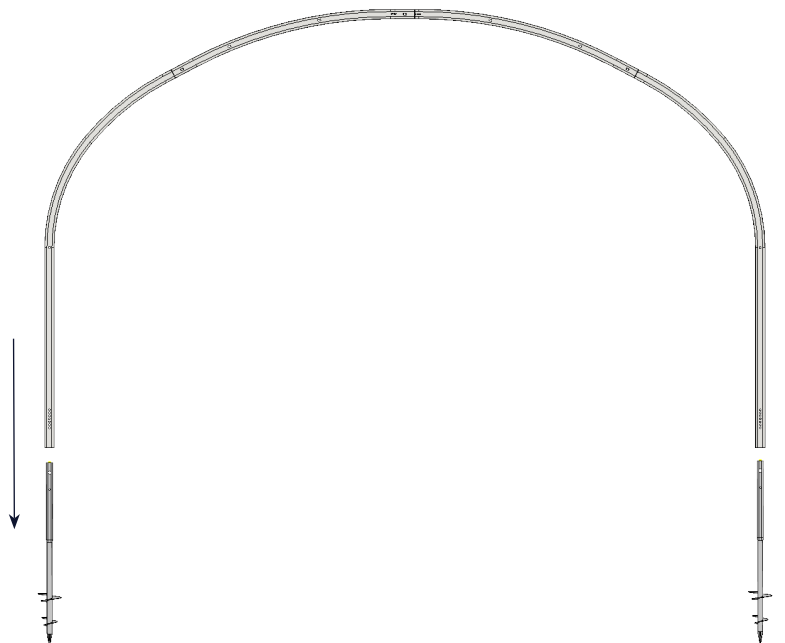


(PER HOOP)

1.



2.





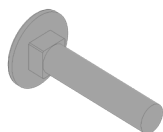
TOOLS NEEDED: 1 x 13MM SPANNER/SOCKET

PACKS NEEDED: EZB201, EZB200

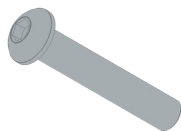
## INNER HOOPS = A



2 x  
FLANGED  
NUTS



1 x  
CUP SQUARE  
BOLTS 40MM



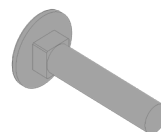
2 x  
BUTTON  
HEAD BOLTS  
45mm

FOR 2 RIDGES

## END HOOPS = B



3 x  
FLANGED  
NUTS



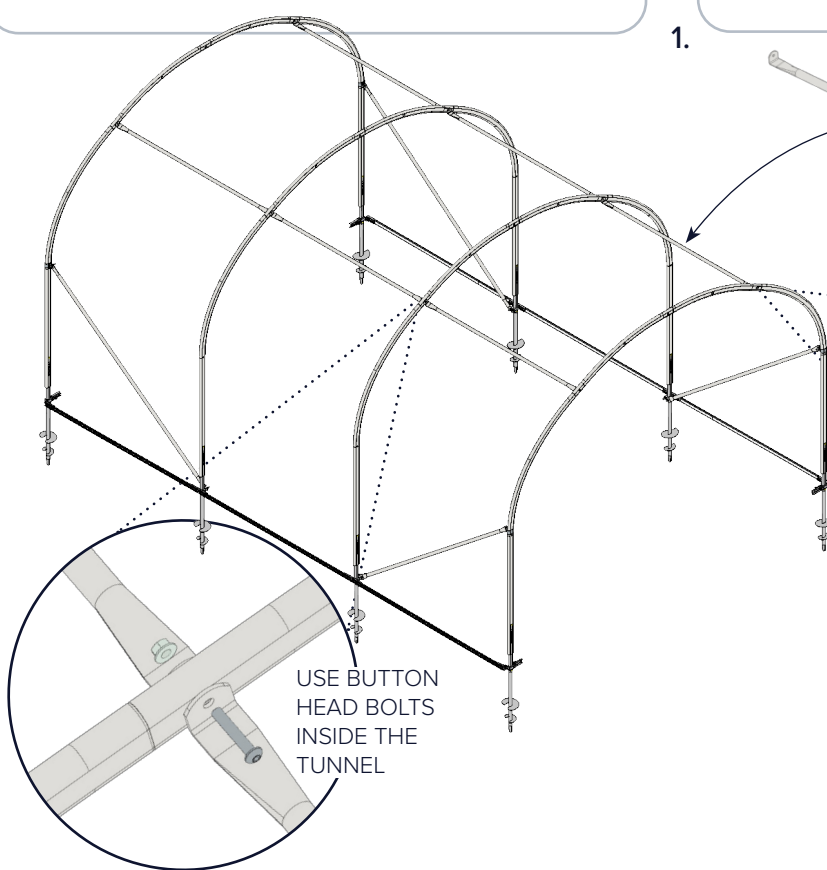
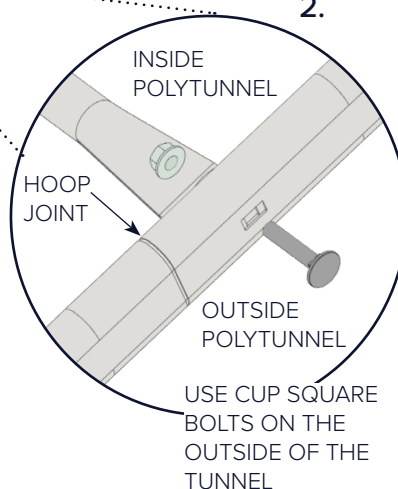
3 x  
CUP SQUARE  
BOLTS 40MM

PER END HOOP

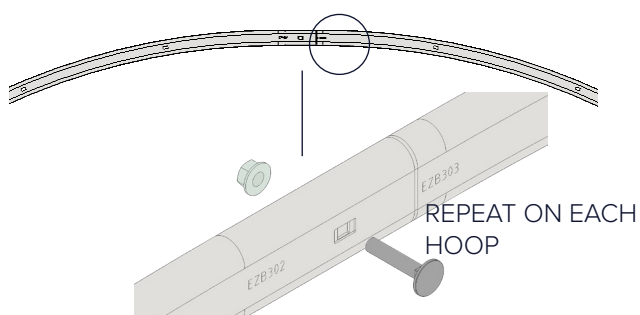
1.



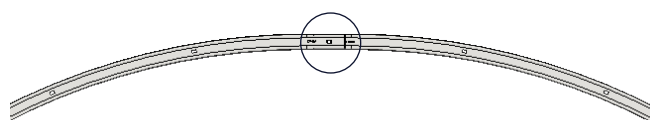
2.



3A. IF NO ADDITIONAL RIDGE  
BARS PURCHASED:



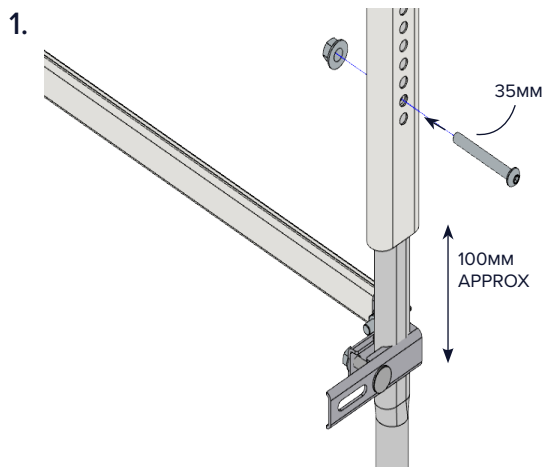
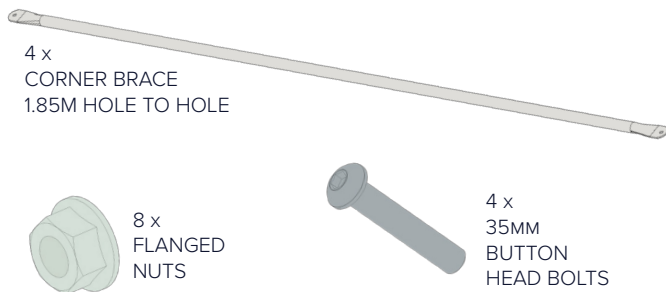
3B. IF ADDITIONAL RIDGE BARS  
PURCHASED, INSTALL AT THIS POINT.  
RIDGE BARS CAN BE PLACED  
ANYWHERE, BUT SOME HOLES MAY BE  
SHARED WITH A DOOR



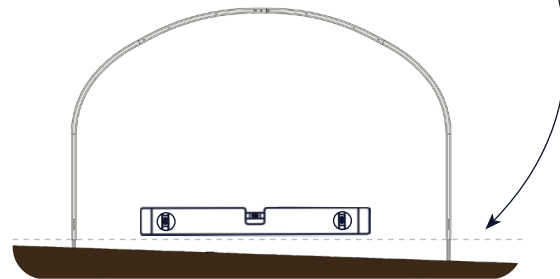
IF YOU HAVE NOT PLACED A RIDGE  
BAR IN THE CENTRE HOLE,  
COMPLETE STEP 3A

## 12 CORNER BRACING

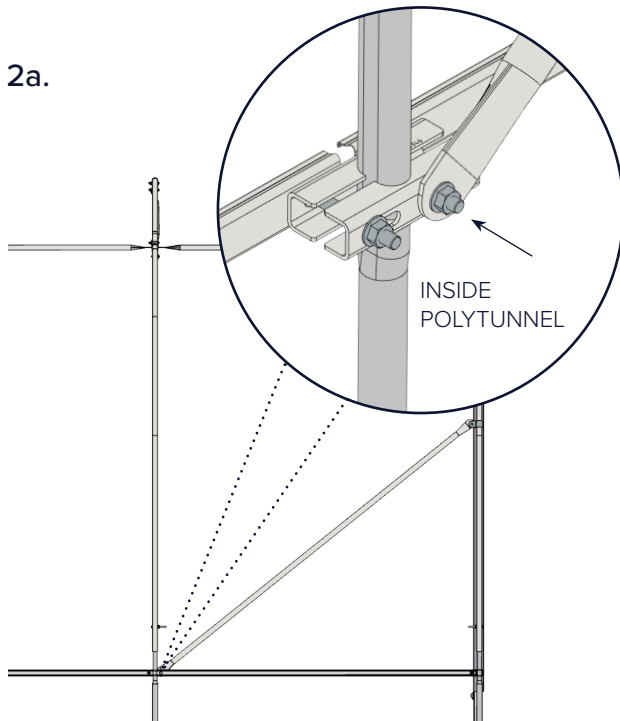
TOOLS NEEDED: 1 x 13MM SPANNER/SOCKET, 4MM ALLEN KEY, SPIRIT LEVEL



**!** IF THE GROUND IS OUT OF LEVEL ACROSS THE WIDTH OF THE POLYTUNNEL USE THE END HOOPS TO LEVEL THE POLYTUNNEL.

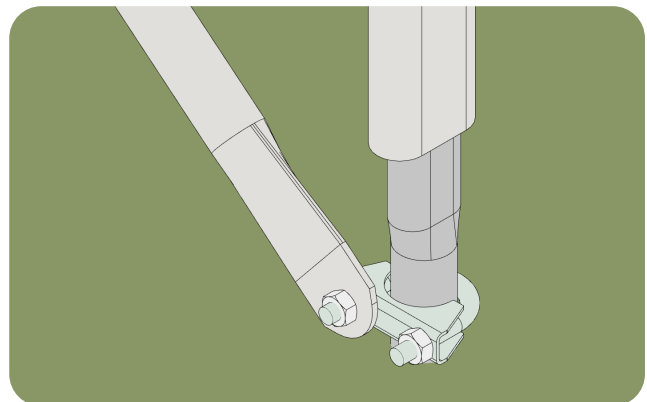


2a.

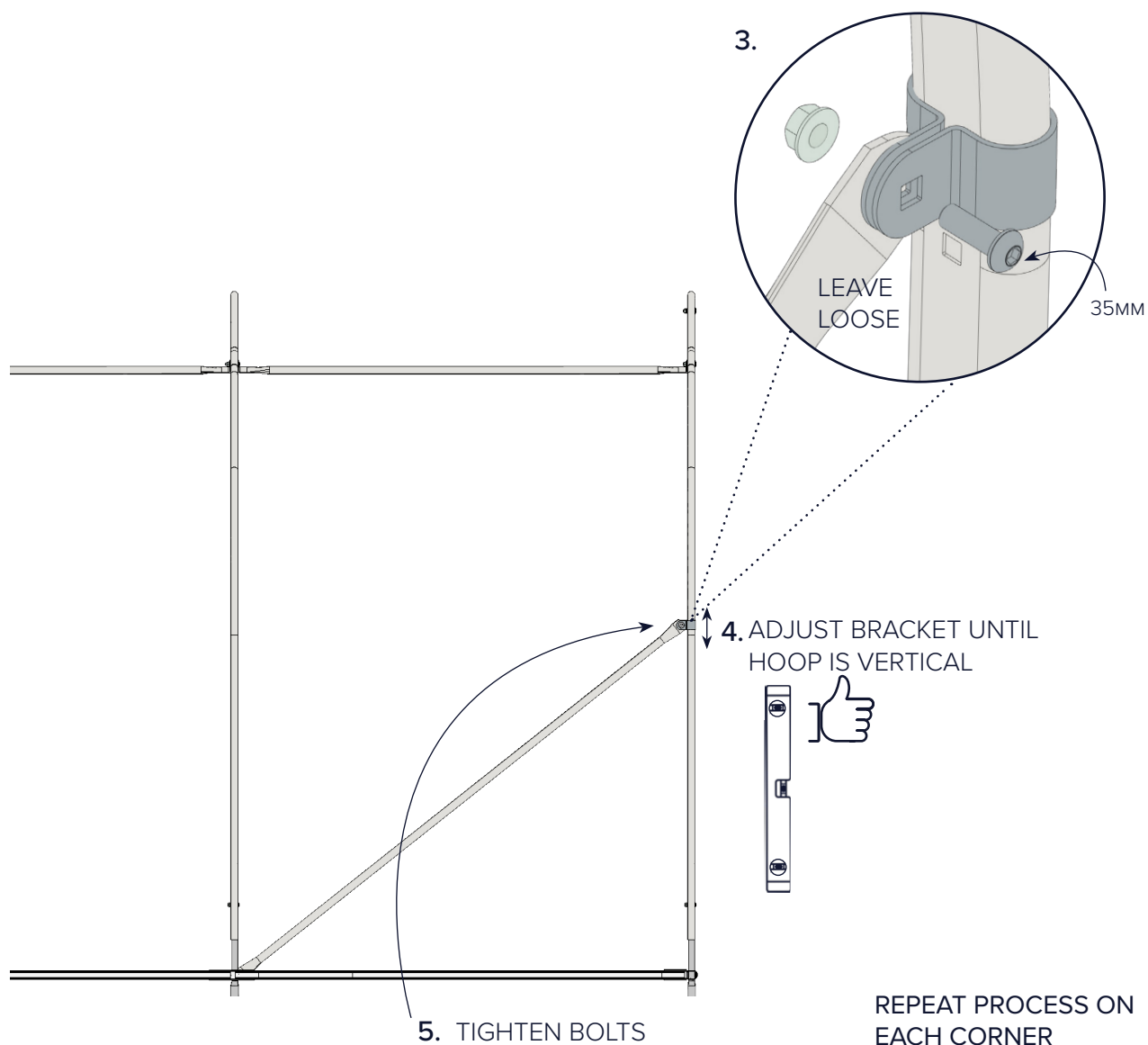


2b.

IF YOU ARE TRENCHING YOUR COVER - USE THE EXHAUST CLAMP PROVIDED WITH YOUR FOUNDATION TO ATTACH THE CORNER BRACKET TO THE HOOP



PACKS NEEDED: EZB200



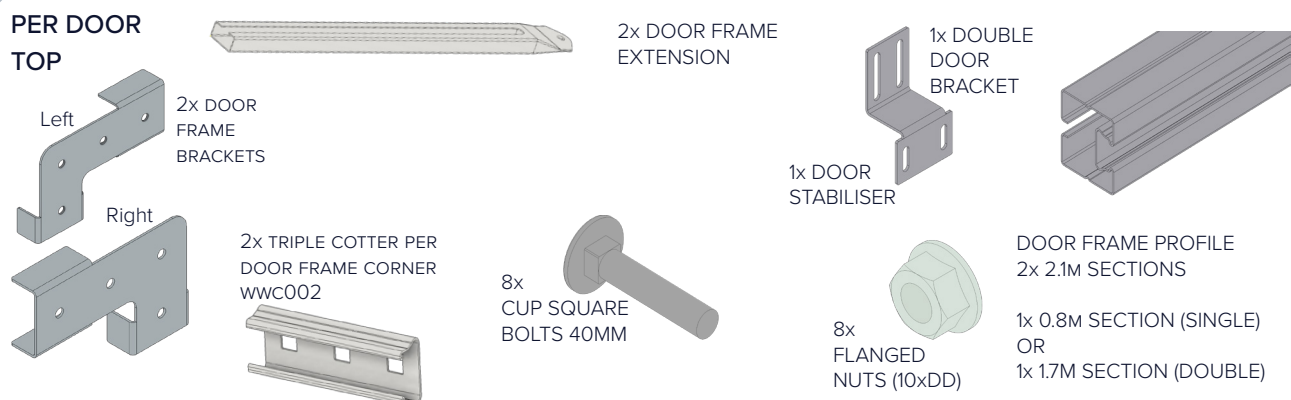
IF INSTALLING SIDE VENTS, INSERT A BOLT INTO EVERY HOOP/FOUNDATION CONNECTION. THIS ENSURES THE HOOPS ARE SECURE AS THE BUILD PROGRESSES.



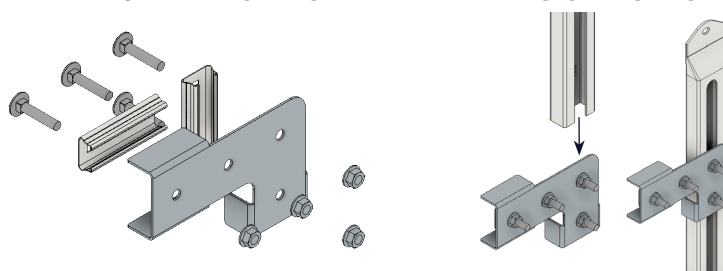
## 14 DOOR FRAMES TOP

**TOOLS NEEDED:** 13MM SPANNER/SOCKET, DRILL, TEK SCREW BIT, STRING LINE, SPADE,  
TAPE MEASURE, SPIRIT LEVEL **PACKS NEEDED:** EZB206

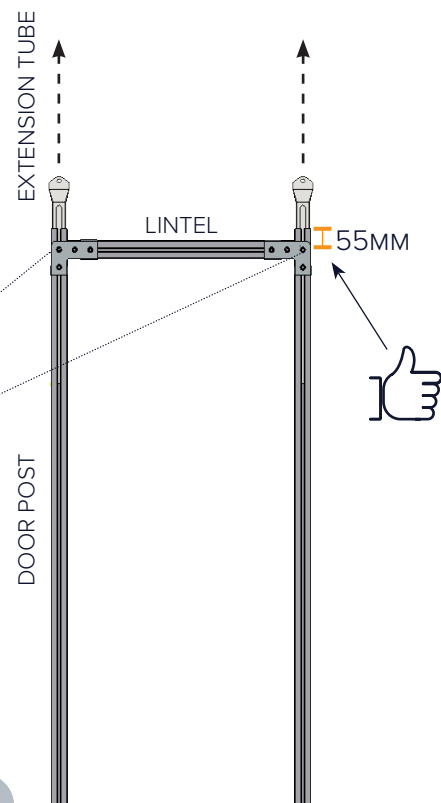
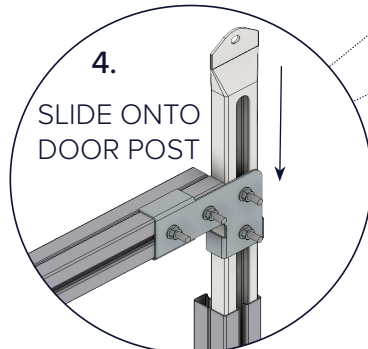
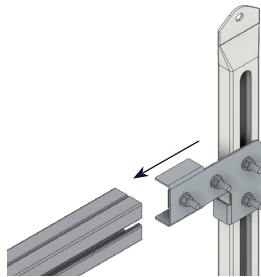
### PER DOOR TOP



1. LOOSELY ASSEMBLE LEFT AND RIGHT BRACKETS
2. SLIDE BRACKETS ONTO EXTENSION TUBES

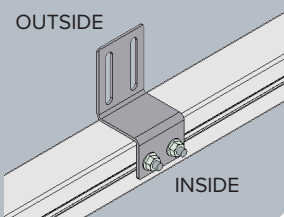


3. SLIDE ON LINTEL



#### DOUBLE DOOR ONLY

SLIDE AN ADDITIONAL DOUBLE COTTER & CUP SQUARE BOLTS INTO THE LINTEL. ATTACH THE DOUBLE DOOR BRACKET IN THE CENTRE OF THE LINTEL.



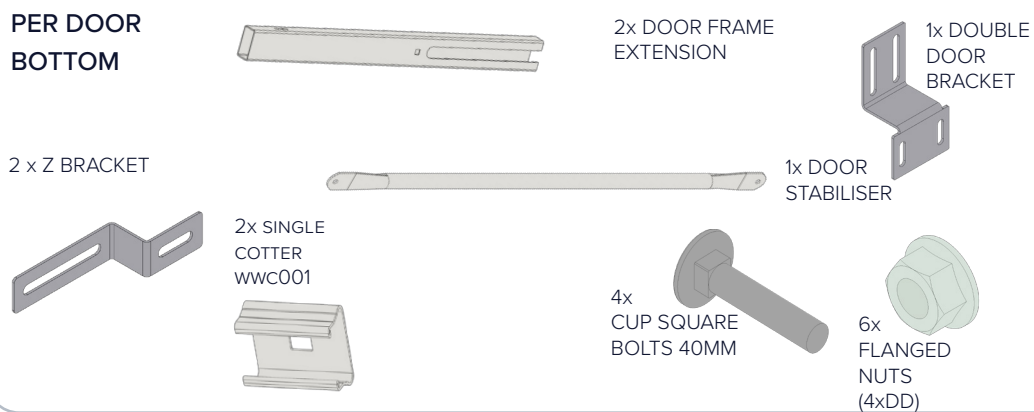
#### 3.5M WIDE TUNNELS ONLY

IF YOUR TUNNEL IS 3.5M WIDE AND INCLUDES A DOUBLE DOOR YOU WILL NEED TO CUT THE DOOR POSTS TO FIT UNDER THE HOOP.

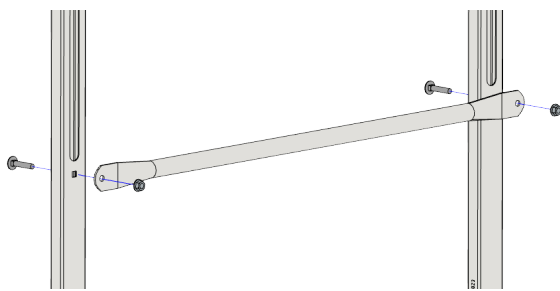
IF USING BASE PLATES SKIP TO PAGE 19

**TOOLS NEEDED:** 13MM SPANNER/SOCKET, DRILL, TEK SCREW BIT, STRING LINE, SPADE,  
TAPE MEASURE, SPIRIT LEVEL **PACKS NEEDED:** EZB206, EZB216

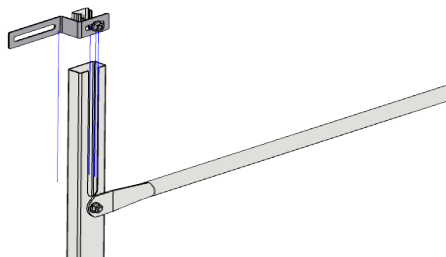
**PER DOOR  
BOTTOM**



1.

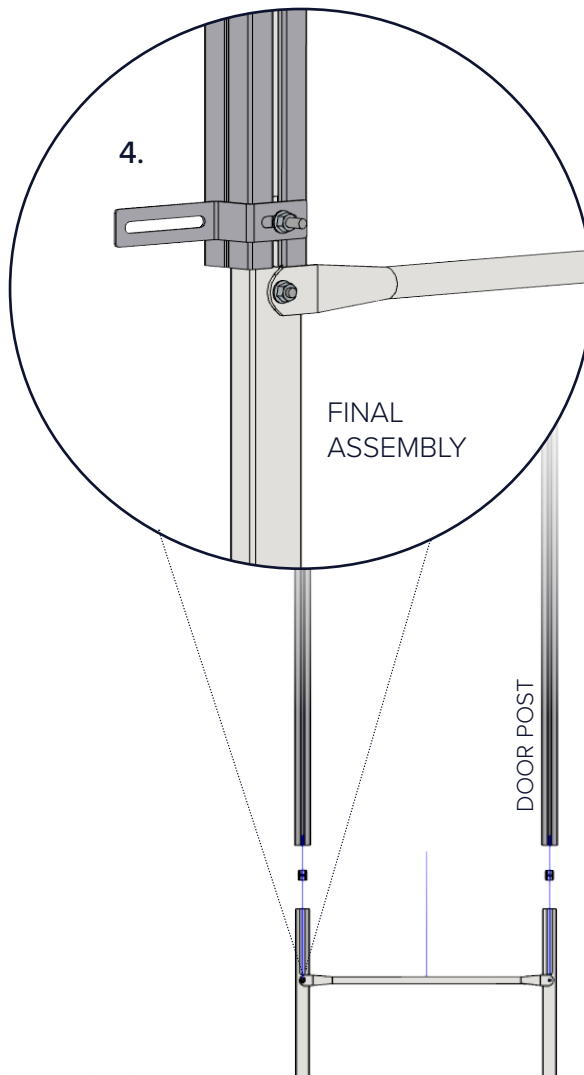
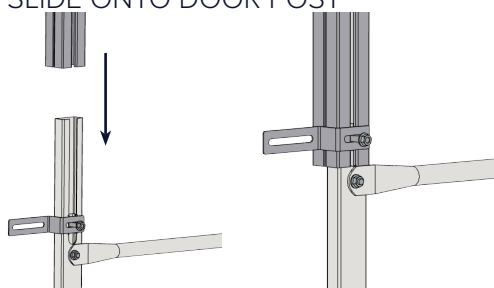


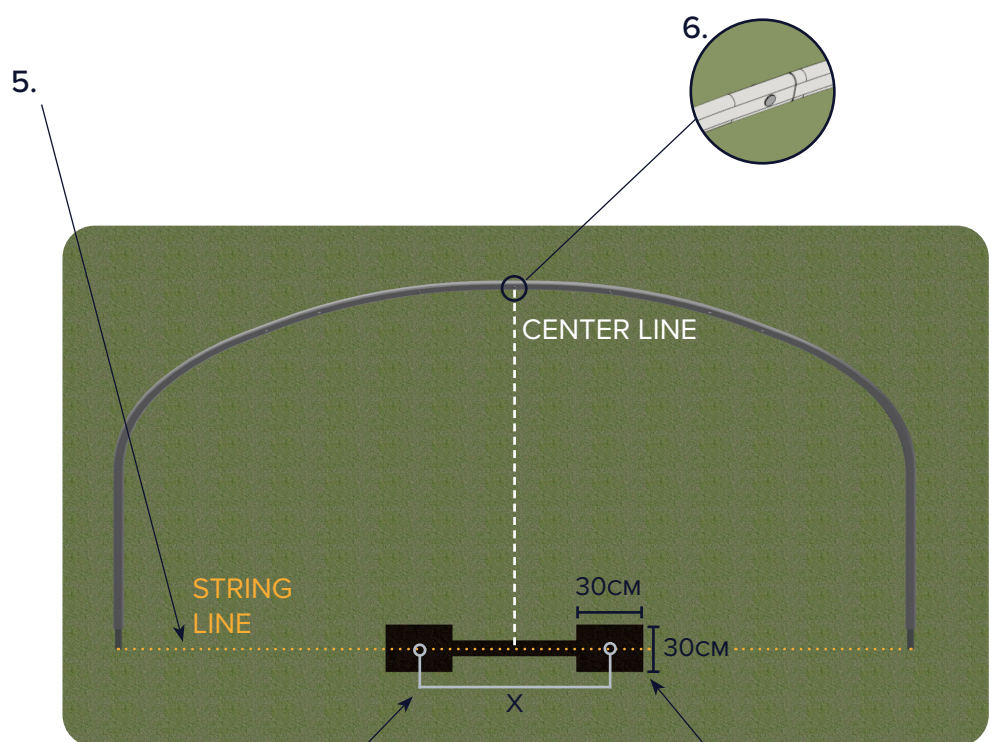
2. SLIDE COTTER, BOLT & Z BRACKET ON EXTENSION TUBE



REPEAT STEPS 1 & 2 FOR BOTH SIDES BEFORE MOVING ON TO STEP 3

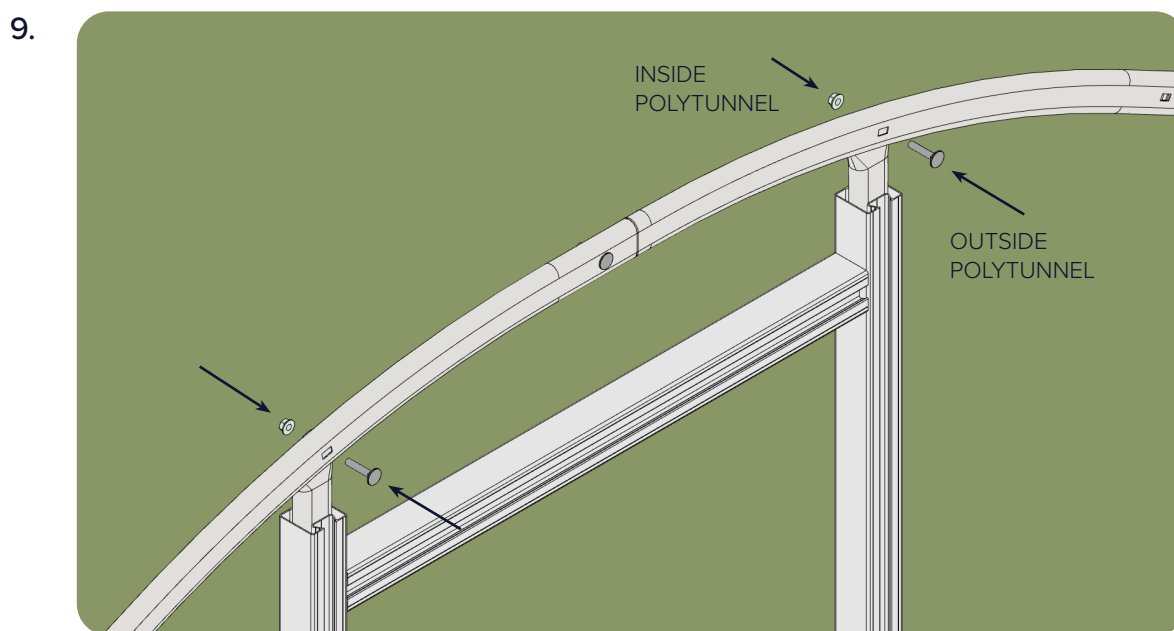
3. SLIDE ONTO DOOR POST





7.  
MEASURE

SINGLE DOOR  $X = 85\text{cm}$   
DOUBLE DOOR  $X = 175\text{cm}$



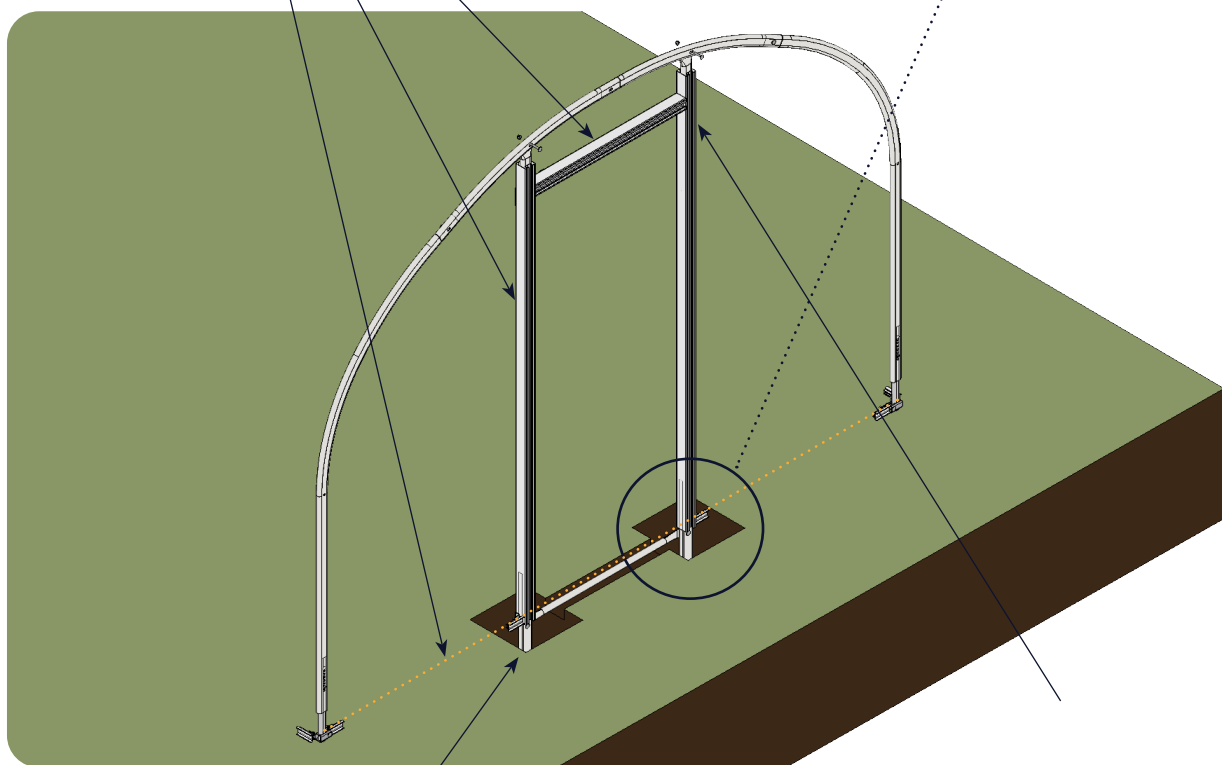
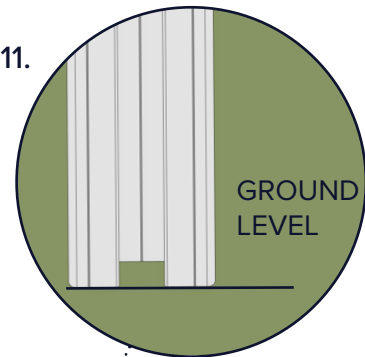


10.



CHECK LEVELS &  
ALIGNMENT

11.



12.



BACK FILL  
HOLES

IF DOOR POSTS DO NOT FIT UNDER THE HOOP,  
EITHER:

- DROP THE DOOR POST FURTHER INTO THE GROUND
- RAISE THE END HOOP UP
- CUT ANY EXCESS OFF THE BOTTOM OF THE DOOR POST

LINTEL HEIGHT IS RECOMMENDED TO BE  
1,945mm - 2,000mm ABOVE GROUND LEVEL.

REPEAT FOR EACH DOOR

## 18 GABLE END BASE RAIL

TOOLS NEEDED: 13MM SPANNER/SOCKET, ALLEN KEY

PACKS NEEDED: EZB202

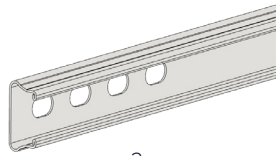
PER END



4 x  
FLANGED  
NUTS

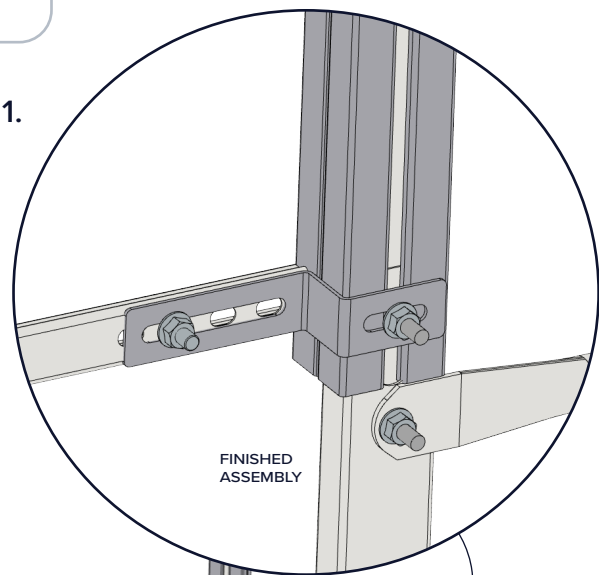


4 x  
BUTTON HEAD  
20MM



2 x  
BASE RAILS

1.

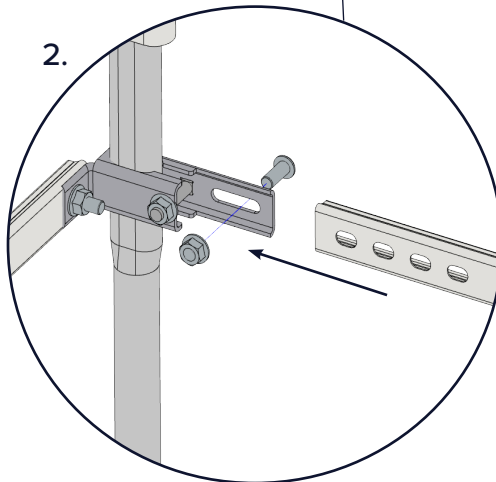


FINISHED  
ASSEMBLY



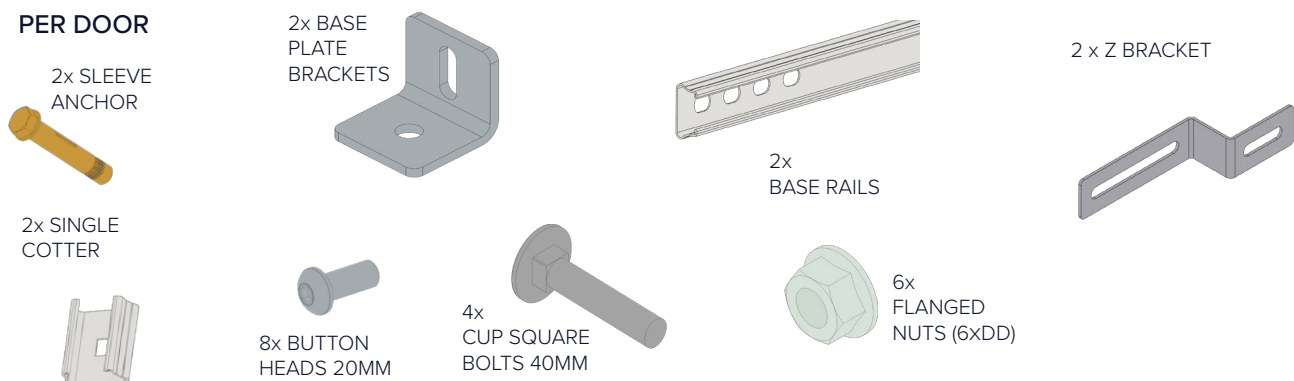
INSIDE  
POLYTUNNEL

2.

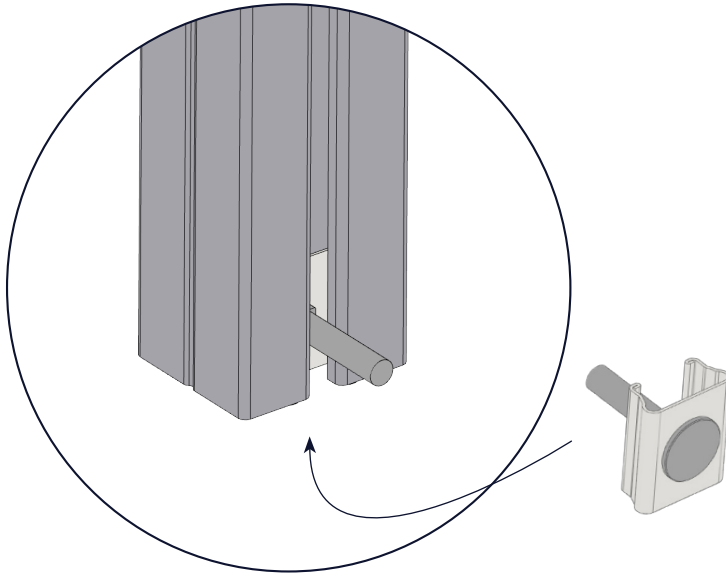


GO TO PAGE 22

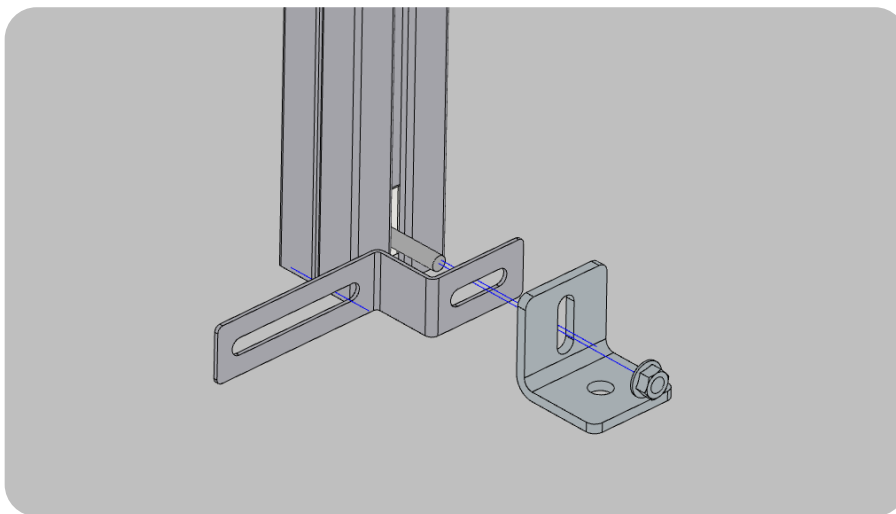
**TOOLS NEEDED:** 10MM MASONRY DRILL BIT, HAMMER DRILL, TEK SCREW BIT, DRILL, STRING LINE, 13MM SPANNER/SOCKET, ALLEN KEY, SPIRIT LEVEL **PACKS NEEDED:** EZB220

**PER DOOR**

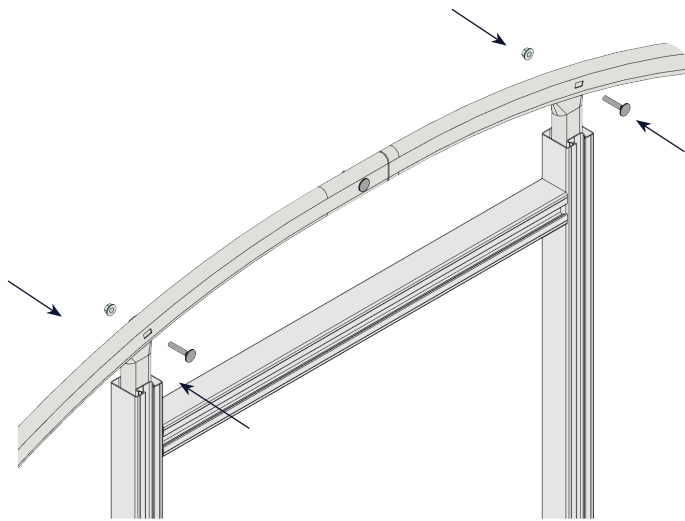
1.



2.



3.

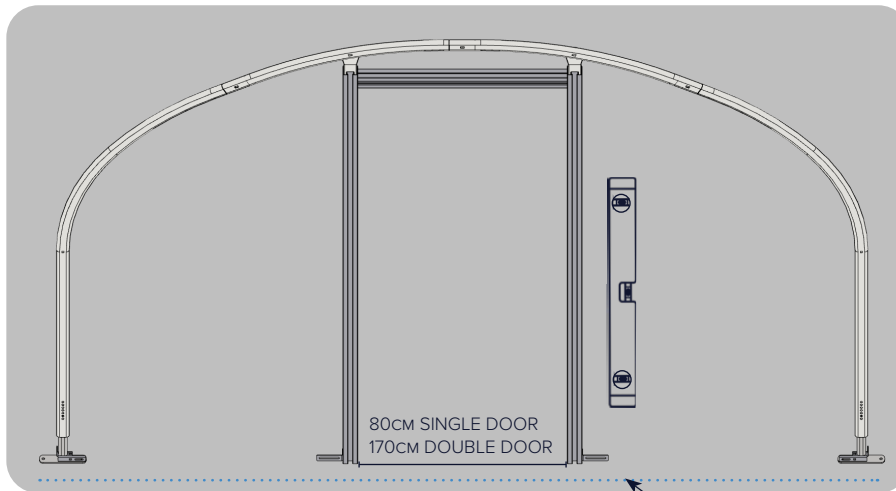


IF DOOR POSTS DO NOT FIT UNDER THE HOOP, EITHER:

- DROP THE DOOR POST FURTHER INTO THE GROUND
- RAISE THE END HOOP UP
- CUT ANY EXCESS OFF THE BOTTOM OF THE DOOR POST

LINTEL HEIGHT IS RECOMMENDED TO BE 1,945mm - 2,000mm ABOVE GROUND LEVEL.

4.

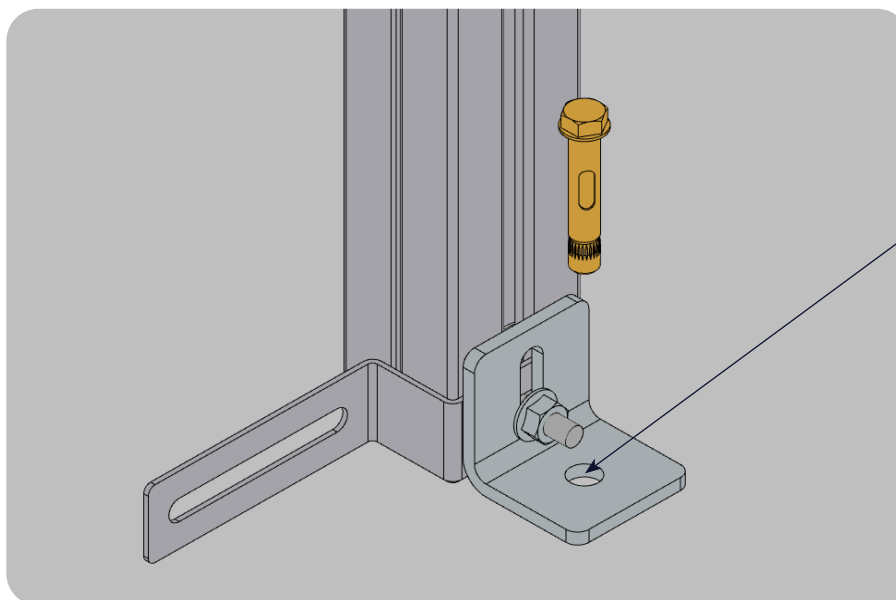


STRING LINE

CHECK DOOR IS IN LINE WITH HOOPS



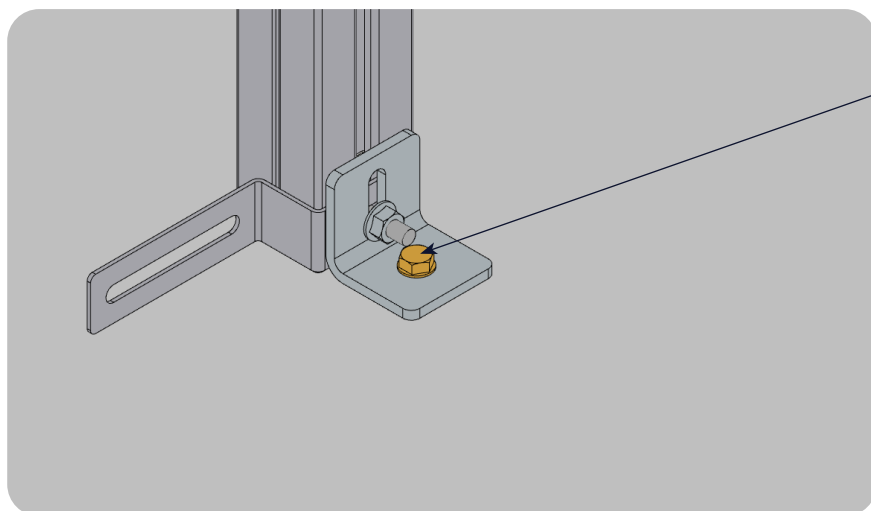
5.



55MM

10MM



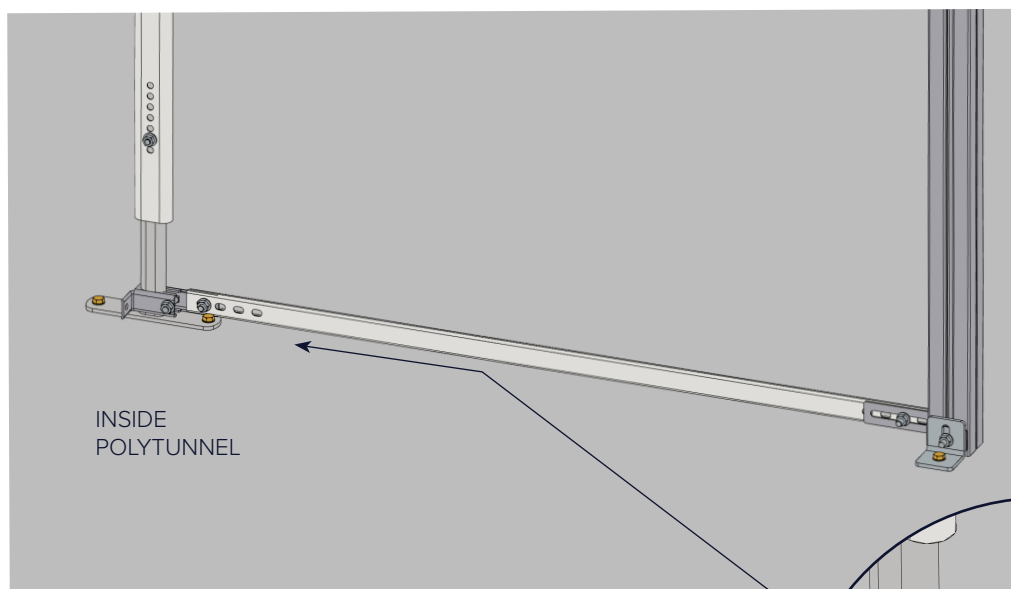
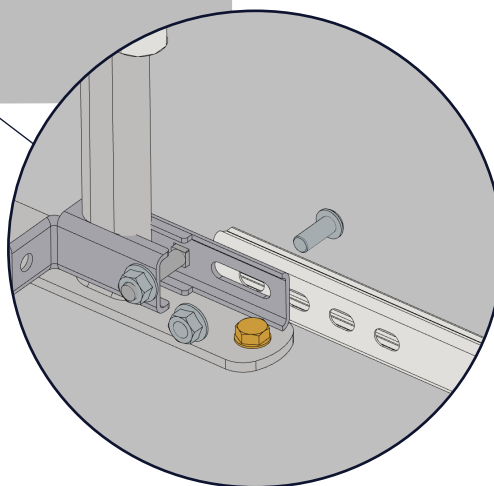


6.

HAMMER IN SLEEVE ANCHOR

TIGHTEN WITH SPANNER

7.

INSIDE  
POLYTUNNEL

REPEAT AT EACH DOOR POST

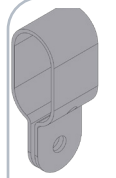
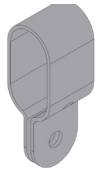
## 22 BRACE BARS (OPTIONAL)

TOOLS NEEDED: 1 x 13MM SPANNER/SOCKET, 4MM ALLEN KEY, LADDERS

PACKS NEEDED: EZB220

NOTE: 2.5M AND 3M TUNNELS  
ARE NOT SUPPLIED WITH V  
HANGERS

1.



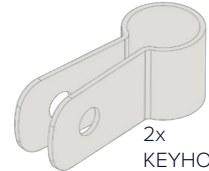
4x  
KEYHOLE  
CLAMP



7 x  
BUTTON  
HEAD BOLTS  
35MM



7 x  
FLANGED  
NUTS



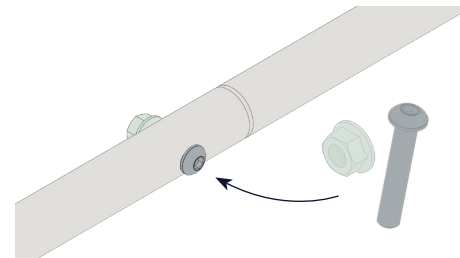
2x  
KEYHOLE  
CLAMP



CROP BAR(S)  
(DEPENDENT ON WIDTH  
SUPPLIED AS 1 OR 2 PIECES)

PER CROP BAR

2. BOLT TOGETHER CROP  
BARS, IF SUPPLIED IN  
TWO PEICES

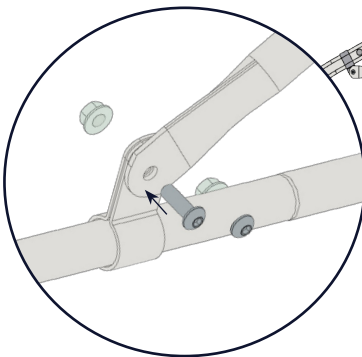
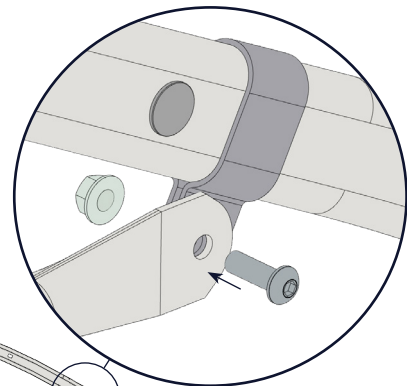


3. OPEN UP THE KEYHOLE  
CLAMPS & PUSH OVER  
THE CROP BAR



4. BOLT THE CROP BAR TO THE LOWER KEYHOLE  
CLAMPS

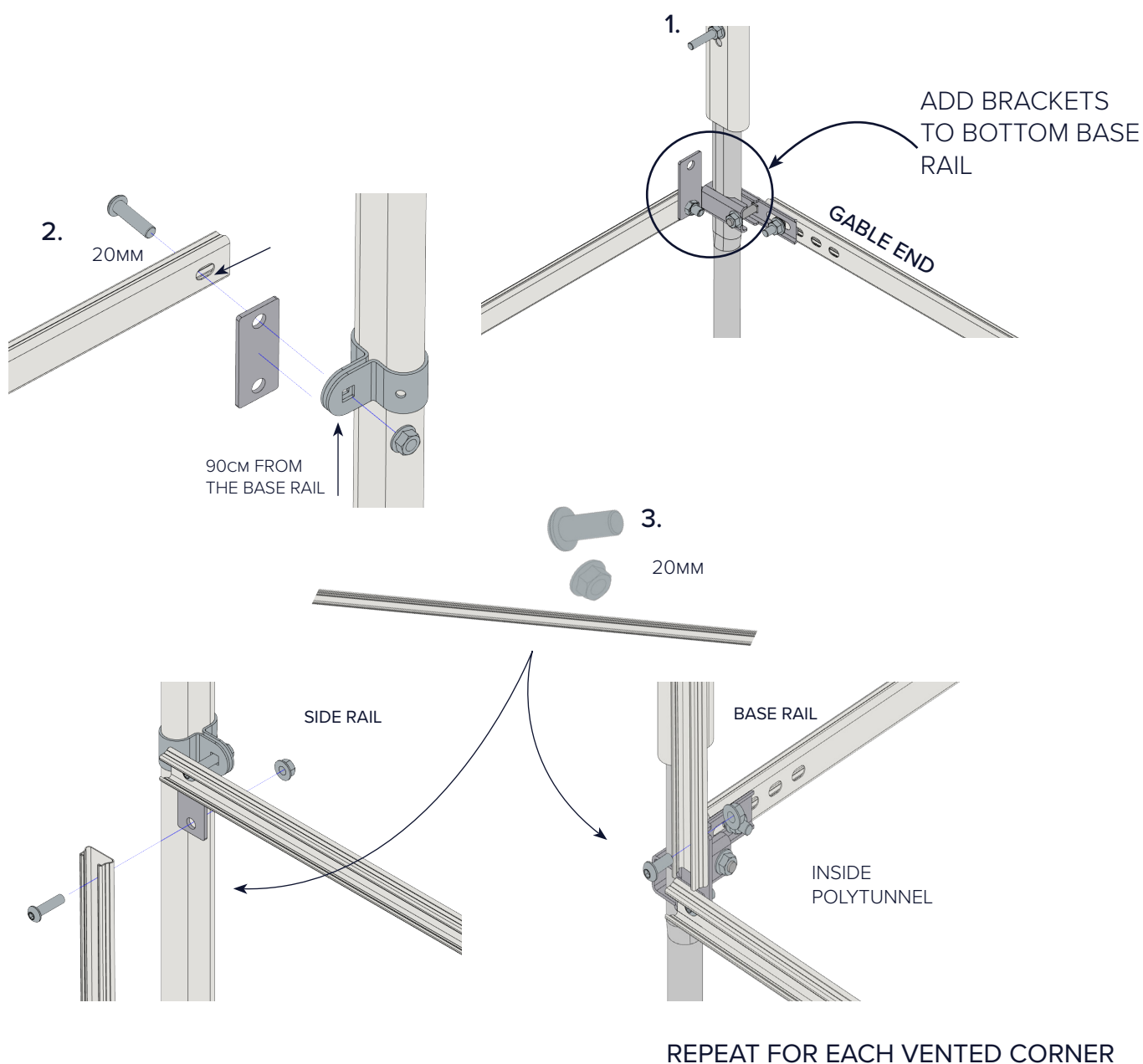
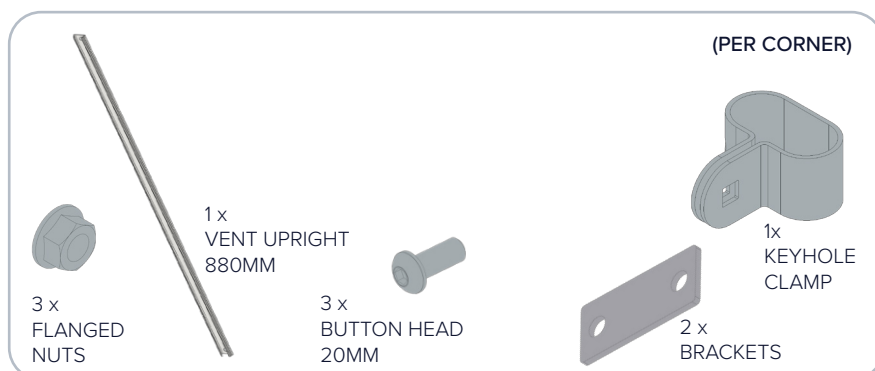
BOLT THE SUPPORT BARS TO THE CROP BAR & THE  
HOOP KEYHOLE CLAMPS



TOOLS NEEDED: 1 x 13MM SPANNER/SOCKET, 4MM ALLEN KEY

PACKS NEEDED: EZB204

## END HOOPS



## 24 SIDE VENTILATION CONTINUED

PACKS NEEDED: EZB205, EZB204

### INNER HOOPS

2 x  
FLANGED  
NUTS



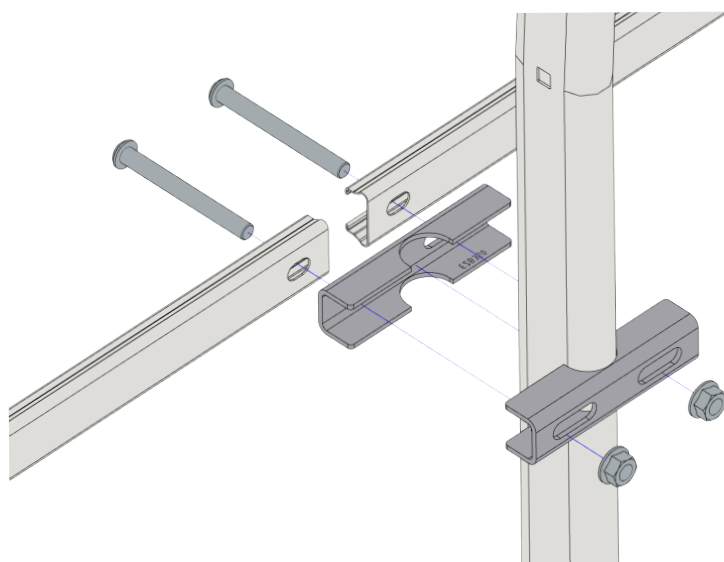
2 x  
BUTTON  
HEAD 75MM



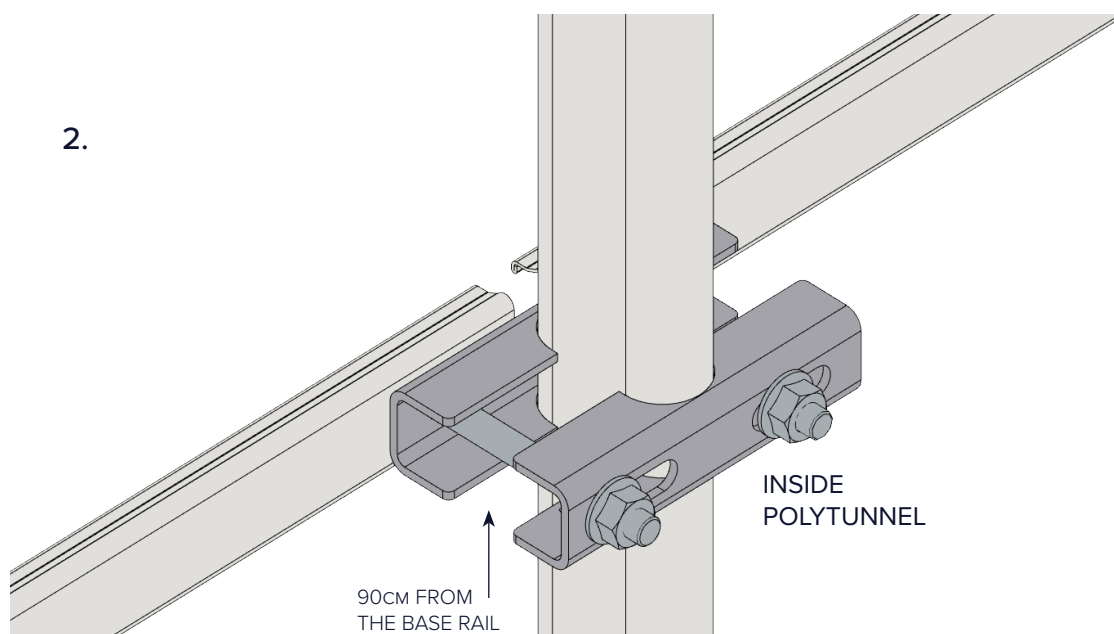
1 x  
SIDE RAIL  
1.48M

(PER HOOP, PER SIDE)

1.

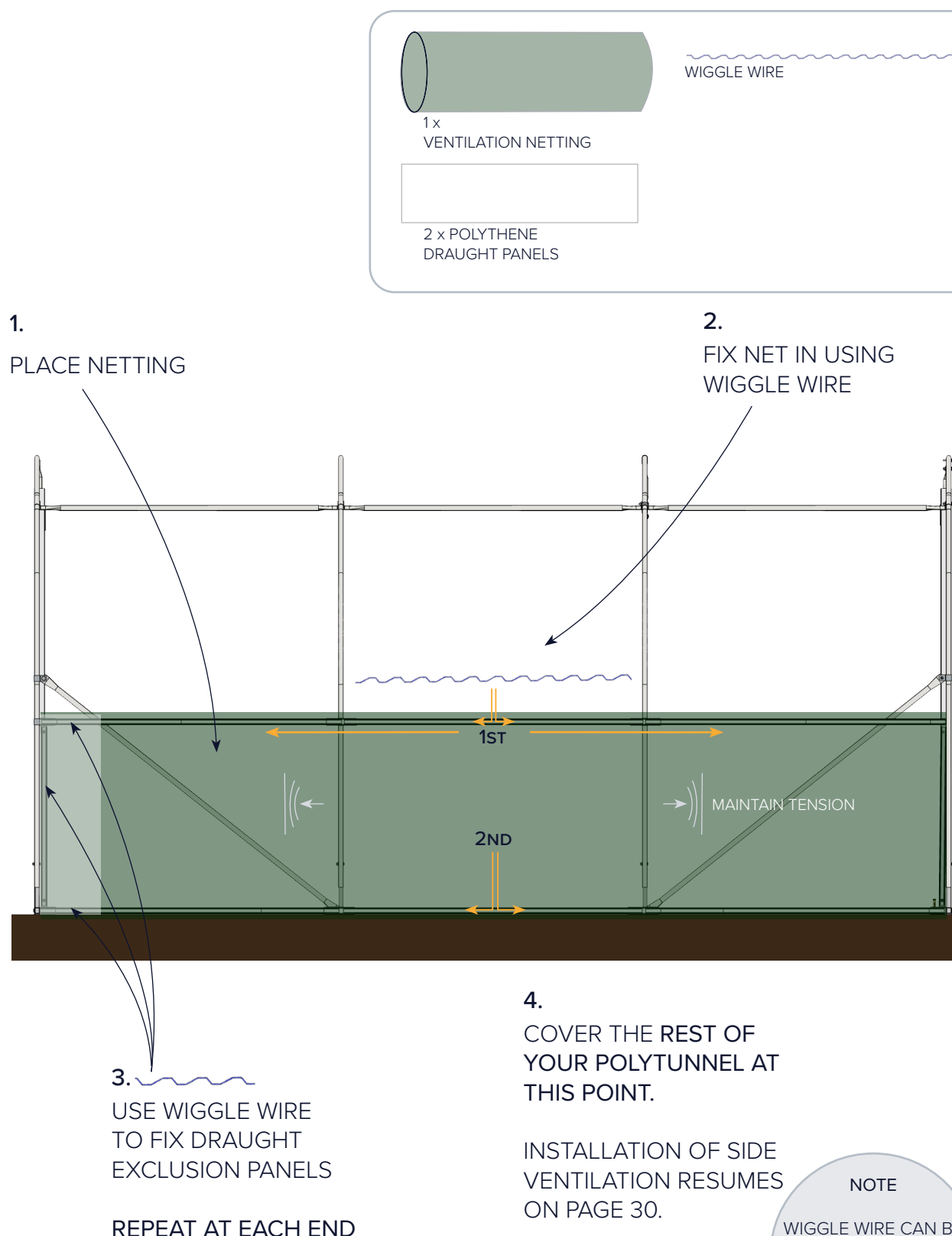


2.



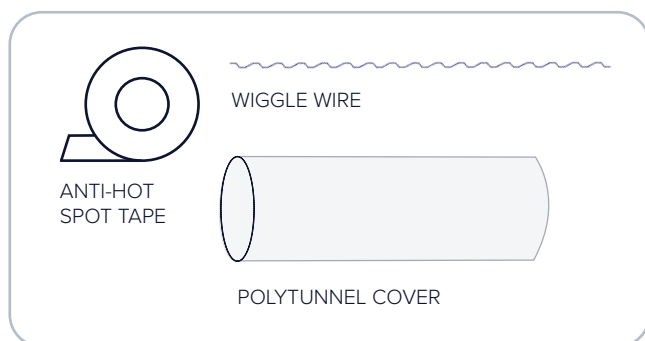
REPEAT FOR ALL INTERMEDIATE HOOPS

TOOLS NEEDED: WIRE CUTTERS, SCISSORS

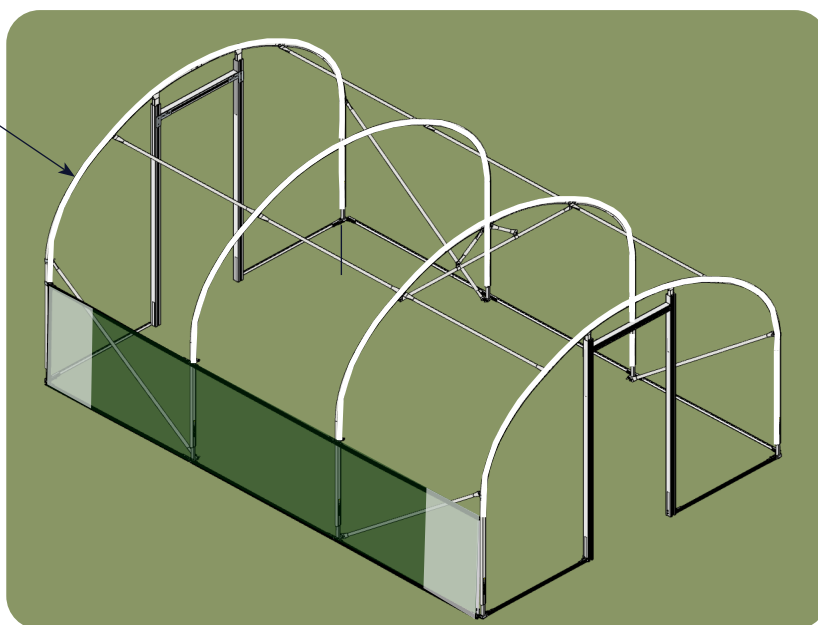


## 26 COVERING (SKIP THIS STEP IF TRENCHING YOUR COVER)

**TOOLS NEEDED:** STANLEY KNIFE OR SCISSORS (PREFERRED), WIRE CUTTERS, LADDER,  
13MM SPANNER/SOCKET, 4MM ALLEN KEY **PACKS NEEDED:** EZB204, EZB205

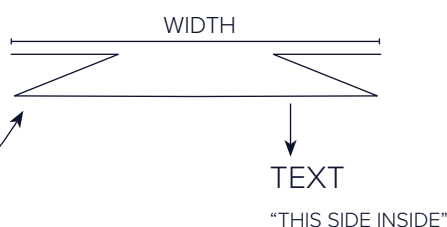


1. ANTI-HOT  
SPOT TAPE
- COVER HOOPS  
AS WELL AS  
ANY SHARP  
EDGES



2. UNROLL OR  
UNFOLD YOUR  
POLYTHENE,  
CHECK IT'S THE  
RIGHT WAY

POLYTHENE IS  
FOLDED LIKE THIS  
ACROSS THE  
WIDTH



YOU MUST BE ABLE  
TO READ THIS  
FROM INSIDE THE  
POLYTUNNEL



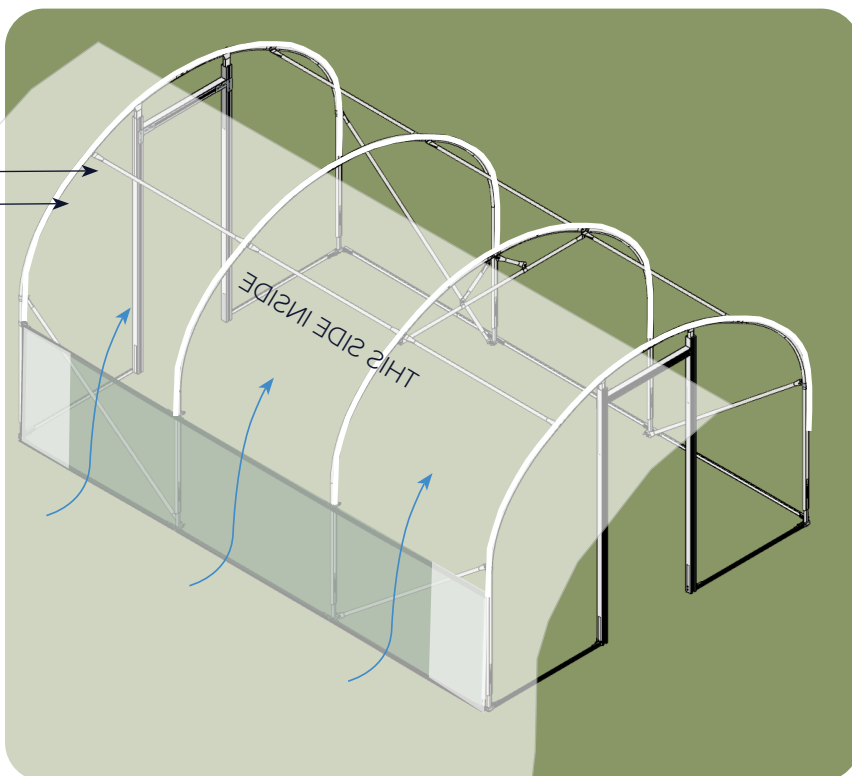


## NOTE

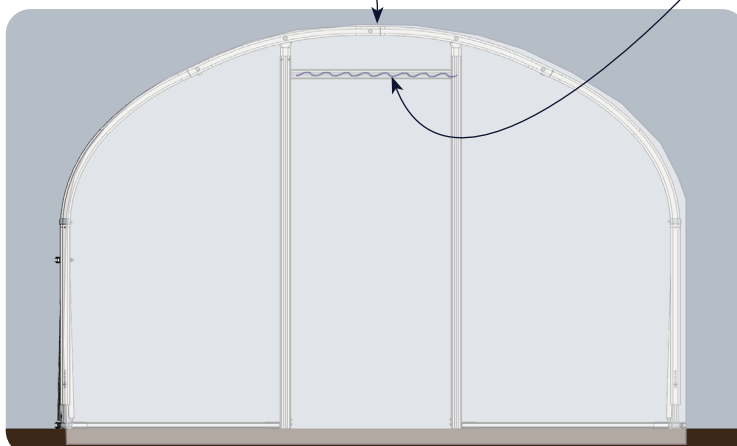
DO NOT ATTEMPT IF  
WIND SPEED  
EXCEEDS 15MPH!

WIND DIRECTION  
SHOULD PUSH THE  
COVER TOWARDS THE  
POLYTUNNEL

3. PULL  
POLYTHENE  
OVER  
POLYTUNNEL



4. FIND A SEAM IN THE  
POLYTHENE, ENSURE THIS  
RUNS IN LINE WITH THE  
LENGTH OF THE POLYTUNNEL



5. WIGGLE WIRE THE  
POLYTHENE INTO THE DOOR  
LINTELS, PULL THE  
POLYTHENE TIGHT AT  
SECOND END

## NOTE

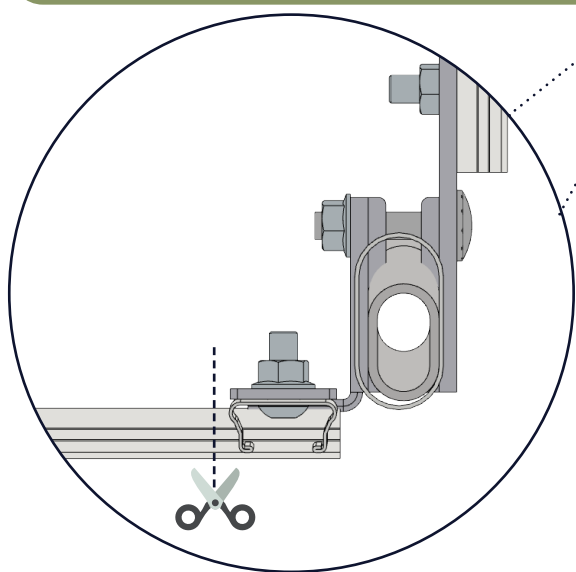
PULL THE COVER AS  
TIGHT AS POSSIBLE  
AS YOU FIX WITH  
WIGGLE WIRE

6. USE WIGGLE WIRE TO FIX THE POLYTHENE INTO BASE RAIL.

IF SIDE VENTILATION INSTALLED, FIX INTO SIDE RAIL AND UPRIGHT VENTILATION RAIL (NOT BASE RAIL)

NOTE

IF YOU HAVE SIDE VENTILATION, DO NOT TRIM OFF THE EXCESS SIDE COVER & ENSURE WHEN COVERING THAT THERE IS ENOUGH POLYTHENE TO FORM THE SIDE CURTAIN.

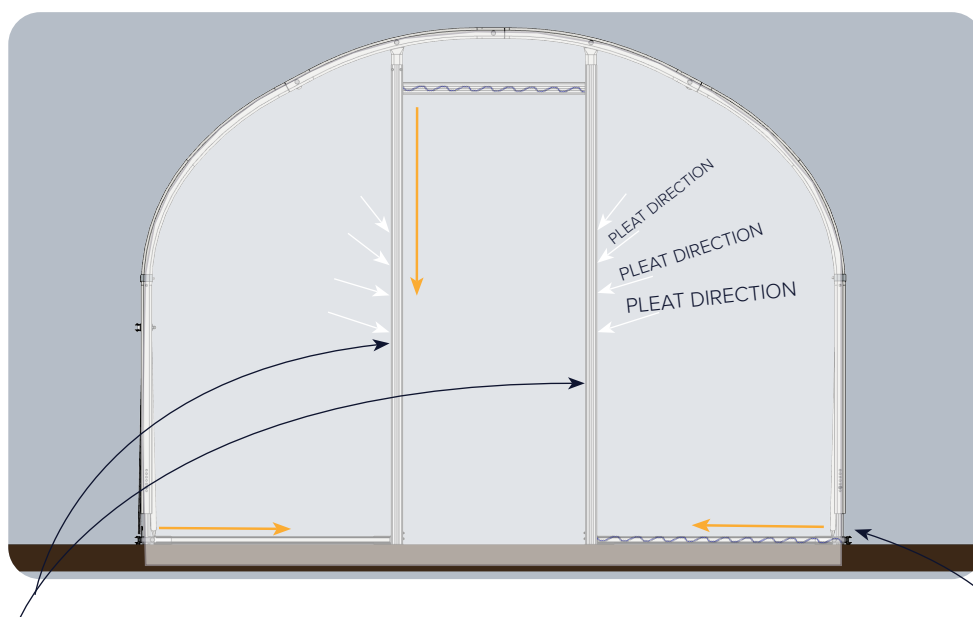


7. CUT POLYTHENE AT CORNERS



IF SIDE VENTILATION FITTED:

YOU WILL NEED TO CUT FROM THE CORNER UP TO THE SIDE RAIL ON THE SIDE OF THE POLYTUNNEL

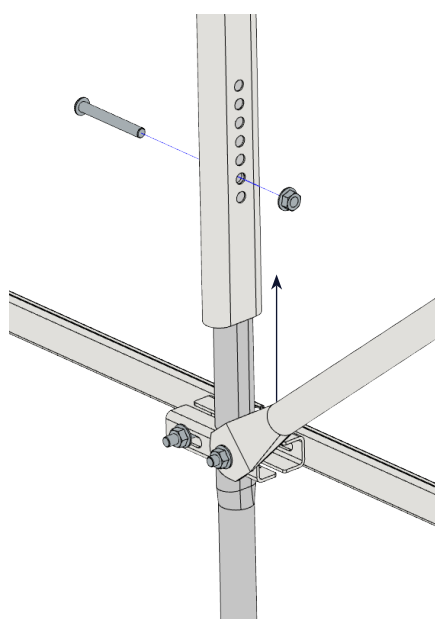


8. USE WIGGLE WIRE TO FIX THE POLYTHENE INTO THE DOOR FRAME.

PULL THE POLYTHENE ACROSS & DOWN AS YOU FIX

ADD AN ADDITIONAL LAYER OF WIGGLE WIRE TO THE DOOR FRAMES FOR EXTRA SECURITY

9. USE WIGGLE WIRE TO FIX THE POLYTHENE INTO THE GABLE END BASE RAILS



10. LIFT THE INNER HOOPS ONE AT A TIME TO TENSION THE COVER

IF SIDE VENTILATION INSTALLED:

LOOSEN THE SIDE RAIL BRACKET ONE AT A TIME

LIFT THE HOOP TO TENSION

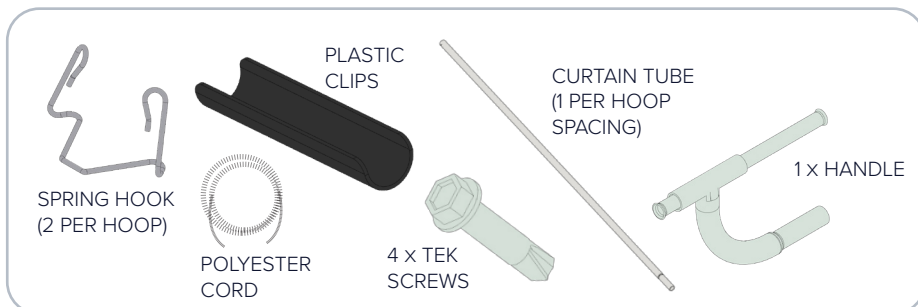
TIGHTEN SIDE RAIL BRACKET

REPEAT ON EACH HOOP

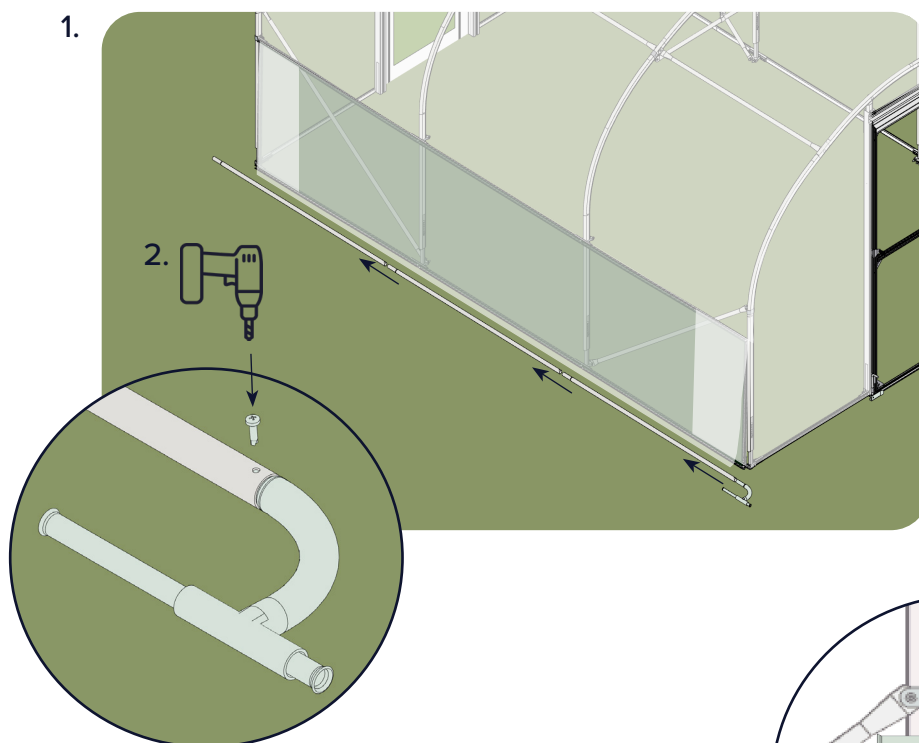
TRIM ANY EXCESS POLYTHENE & WIGGLE WIRE IF NO SIDE VENT FITTED

TOOLS NEEDED: DRILL WITH TEK SCREW BIT, SCISSORS

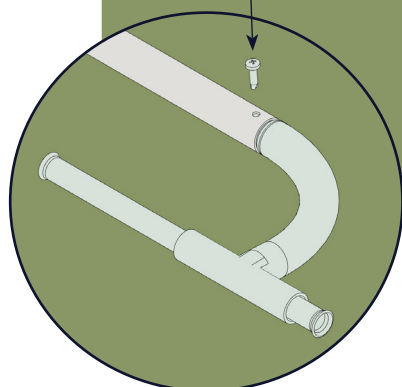
\*RESUME FROM THIS POINT ONCE YOU HAVE COVERED YOUR POLYTUNNEL\*



1.



2.

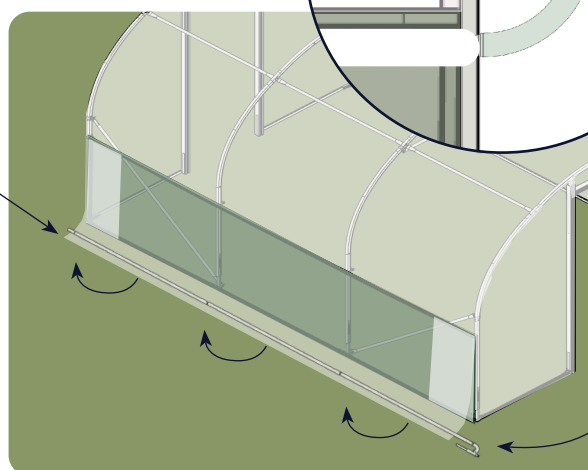


3. YOU NEED AT LEAST 100MM OF EXCESS POLYTHENE TO ATTACH THE CURTAIN TUBE, TRIM IF EXCESSIVELY LONG OR UNEVEN.

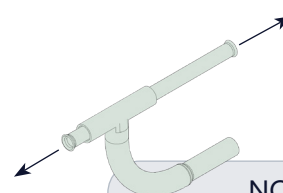
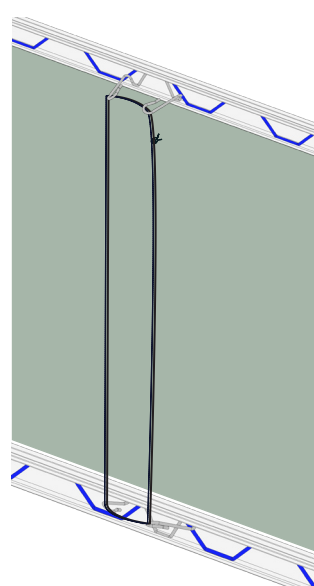
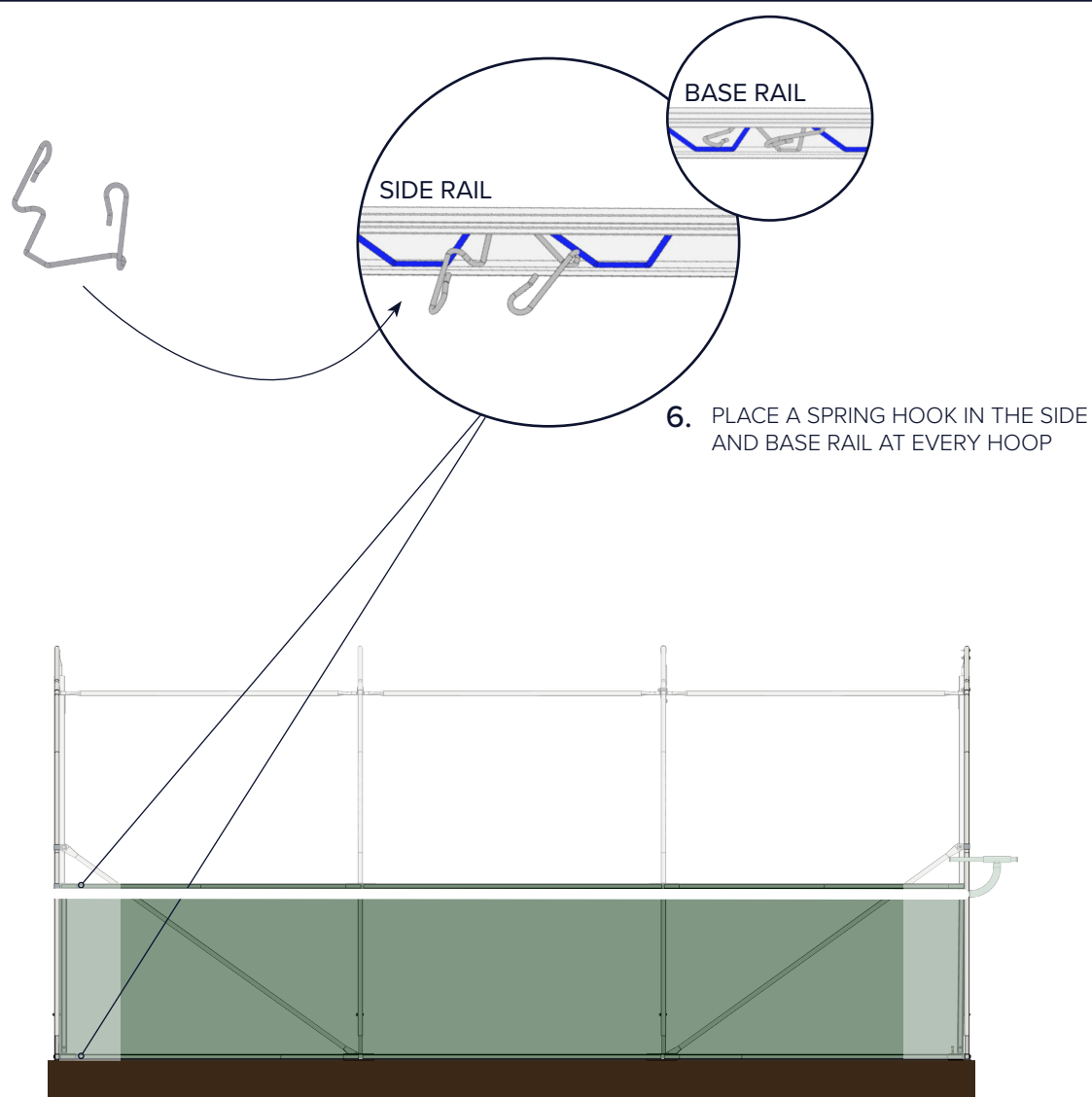
4. CLIP THE ASSEMBLED TUBE TO THE BOTTOM OF THE POLYTHENE CURTAIN USING THE PLASTIC CLIPS



5. YOU SHOULD NOW BE ABLE TO WIND THE CURTAIN UP AND DOWN



HANDLE  
PLACEMENT

**NOTE**

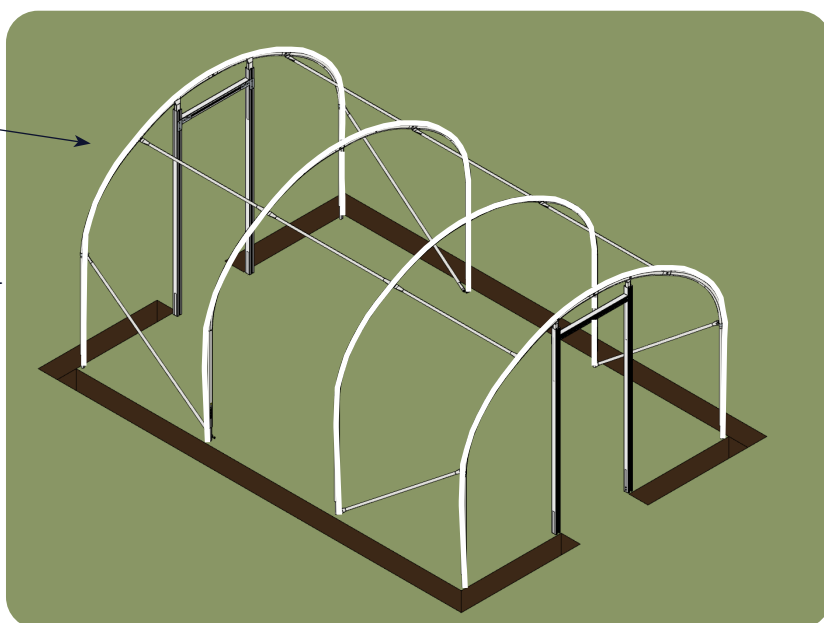
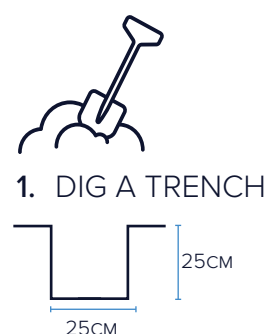
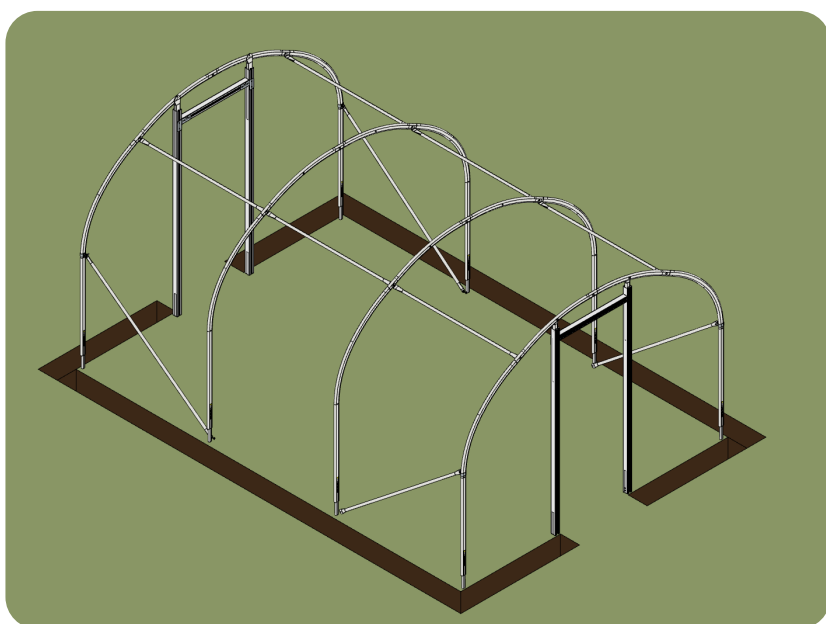
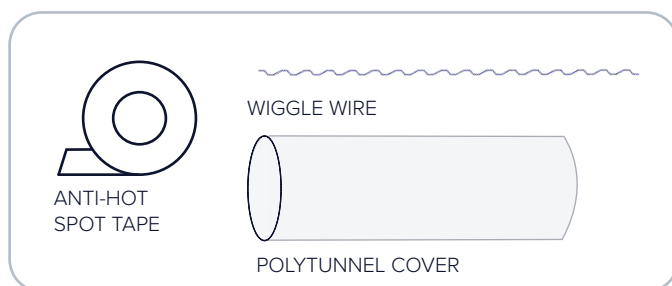
THE HANDLE HAS A TUBE THAT SLIDES IN AND OUT.

SLIDE THE TUBE OUT TOWARDS YOU TO OPEN OR CLOSE THE CURTAIN.

SLIDE THE TUBE AWAY FROM YOU TO LOCK THE CURTAIN IN PLACE.

## 32 COVERING (TRENCHED FIXING METHOD)

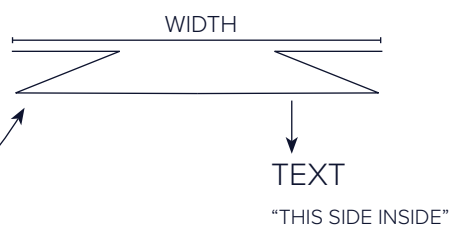
TOOLS NEEDED: SPADE, FORK, STANLEY KNIFE OR SCISSORS, WIRE CUTTERS, TAPE MEASURE, 4MM ALLEN KEY, 13MM SPANNER/SOCKET





3. UNROLL YOUR  
POLYTHENE,  
CHECK IT'S THE  
RIGHT WAY  
ROUND

POLYTHENE IS  
FOLDED LIKE  
THIS



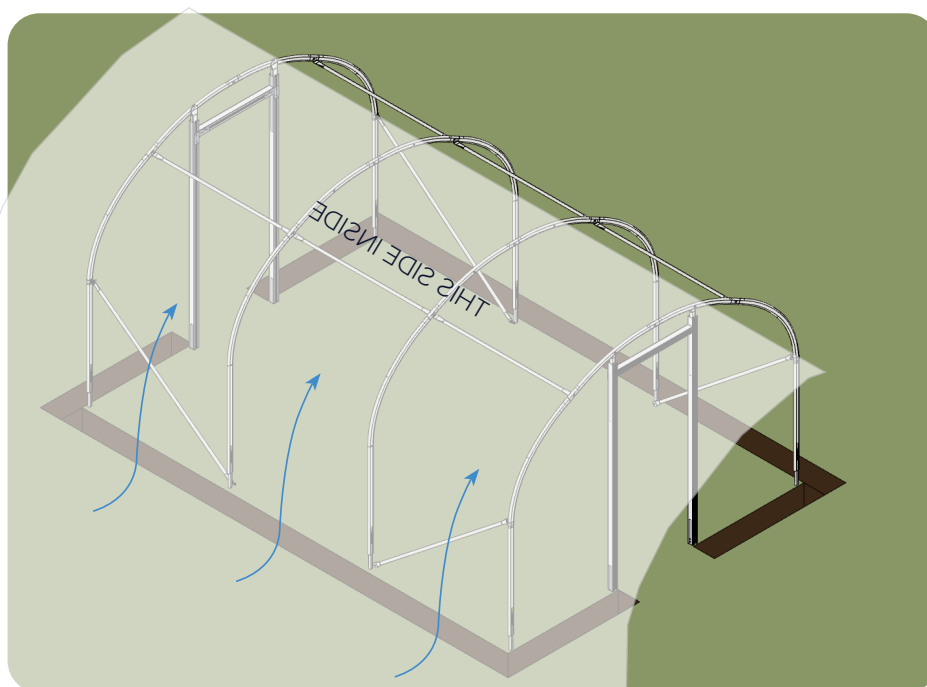
YOU MUST BE ABLE  
TO READ THIS  
FROM INSIDE THE  
POLYTUNNEL



NOTE

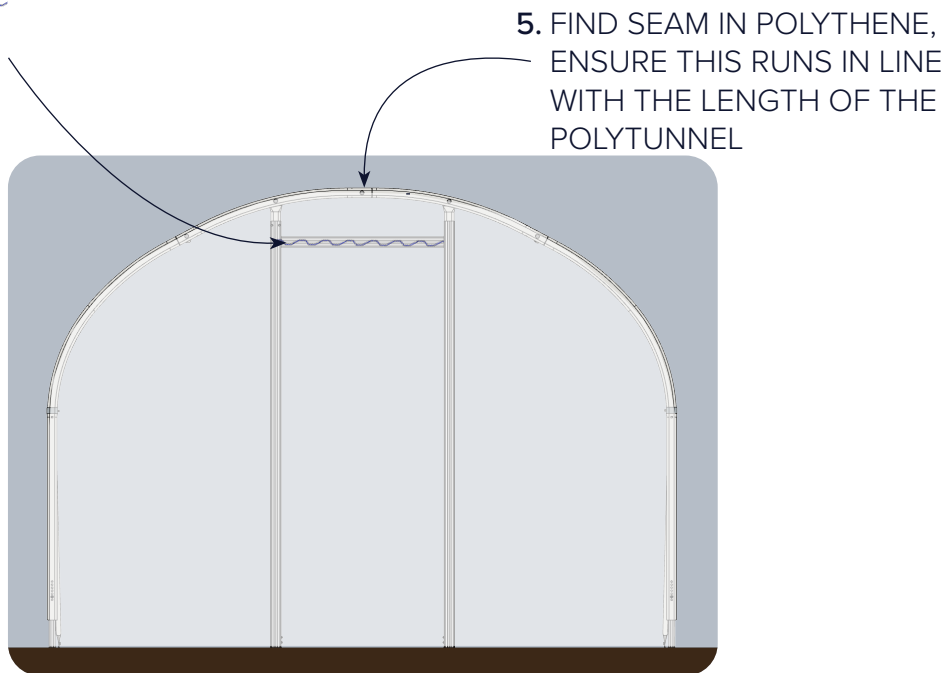
DO NOT ATTEMPT IF  
WIND SPEED  
EXCEEDS 15MPH!

WIND DIRECTION  
SHOULD STICK THE  
COVER TO THE  
POLYTUNNEL

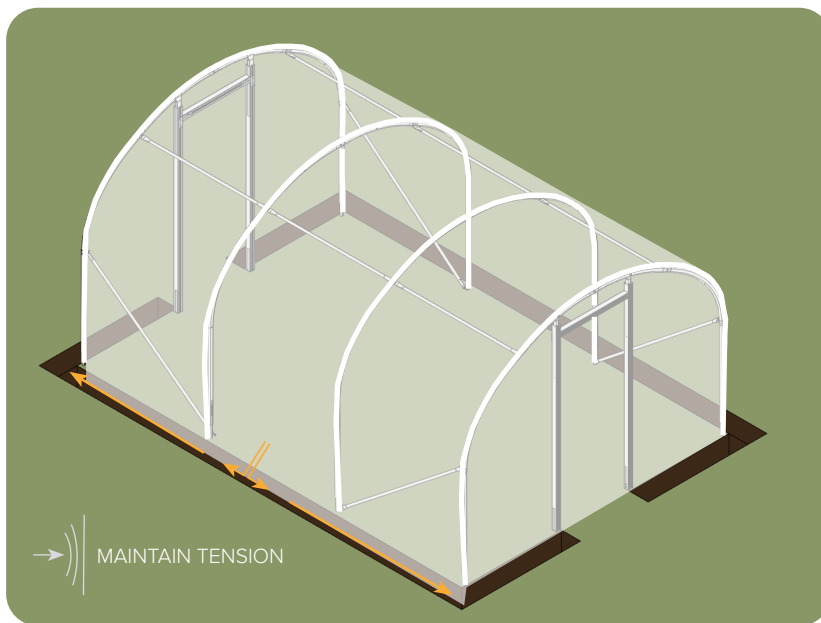


4. PULL  
POLYTHENE  
OVER  
POLYTUNNEL

6. WIGGLE WIRE THE POLYTHENE INTO THE DOOR LINTELS, PULL THE POLYTHENE TIGHT AT SECOND END

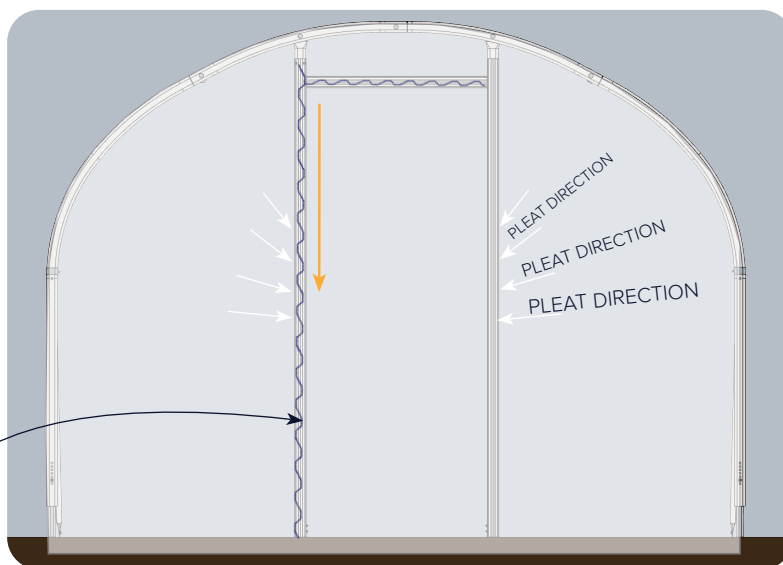
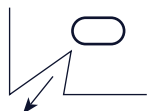


7. PIERCE TRENCHED POLYTHENE WITH A FORK FOR DRAINAGE



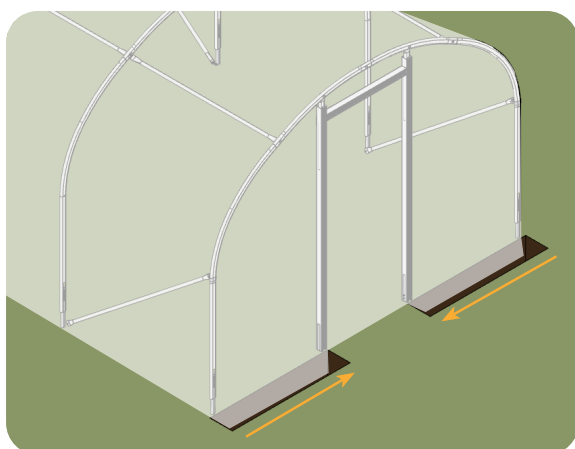
8. PULL POLYTHENE TIGHT AND BACKFILL THE TRENCH ALONG THE LENGTH OF THE TUNNEL

9. CUT POLYTHENE AT CORNERS



10. USE WIGGLE WIRE TO FIX THE POLYTHENE INTO THE DOOR FRAME.

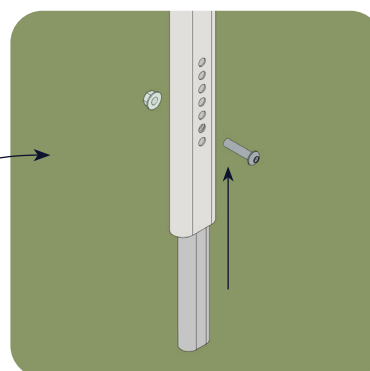
PULL THE POLYTHENE ACROSS & DOWN AS YOU FIX



11. PULL POLYTHENE TIGHT AND BACKFILL THE TRENCH ALONG THE GABLE ENDS OF THE TUNNEL

12. ADD AN ADDITIONAL LAYER OF WIGGLE WIRE TO THE DOOR FRAMES FOR EXTRA SECURITY

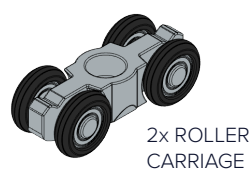
13. LIFT THE INTERNAL HOOPS ONE AT A TIME TO TENSION THE COVER



TRIM ANY EXCESS POLYTHENE & WIGGLE WIRE

TOOLS NEEDED: 1 x 13MM SPANNER/SOCKET, 4MM ALLEN KEY, SPIRIT LEVEL

PACKS NEEDED: EZB207, EZB217



2x ROLLER CARRIAGE



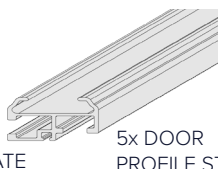
2x HEX BOLTS



3x BRUSH STRIP



DOOR HANDLE PLATE



5x DOOR PROFILE STRIPS



30x BUTTON HEAD BOLTS



WIGGLE WIRE



DOOR KNOB



32x NUTS



2x CORNER BRACKETS

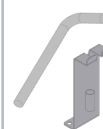


DOOR COVER

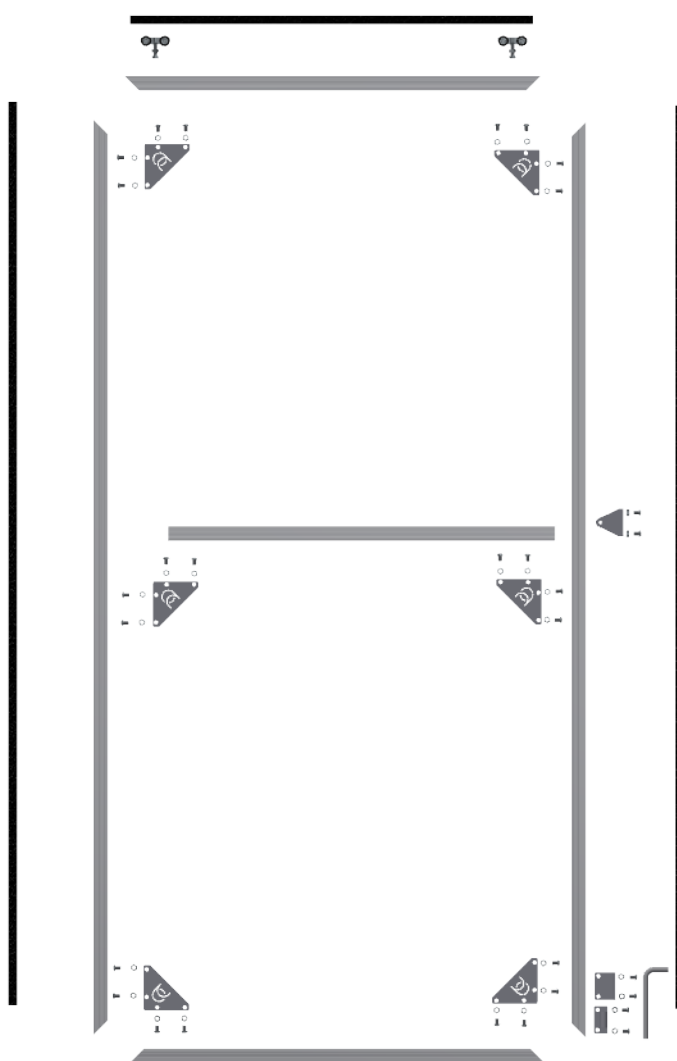


SINGLE DOOR DROP BOLT ASSEMBLY

- OR -



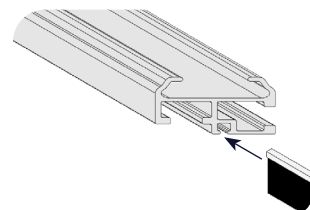
DOUBLE DOOR DROP BOLT ASSEMBLY



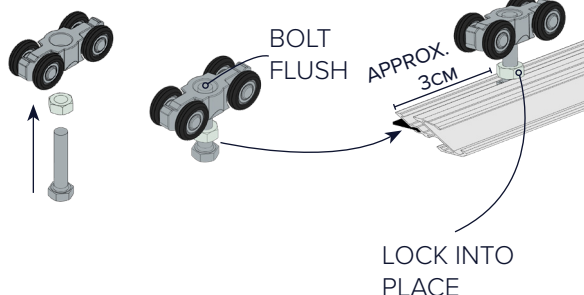
EXAMPLE: DOOR SLIDING LEFT,  
DROP BOLT ON RIGHT

### 1. LAY OUT THE PARTS

### 2. INSERT BRUSH STRIP



### 3. ROLLER CARRIAGES



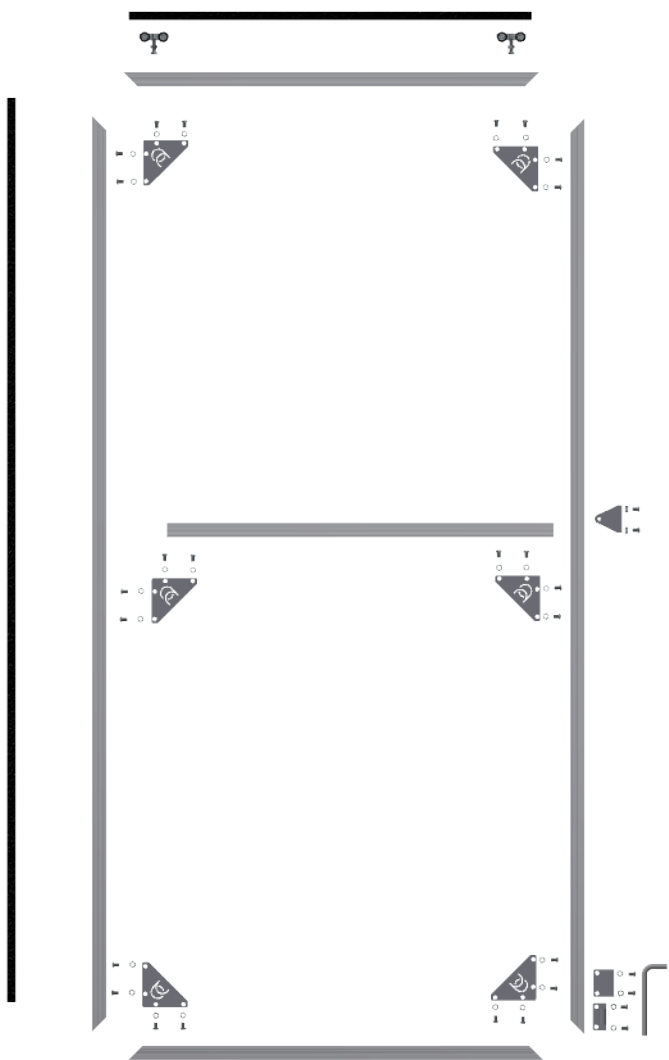
#### ! SINGLE DOOR ONLY

PLACE DROP BOLT ON OPPOSITE SIDE TO THE DOOR'S FINAL SLIDING DIRECTION.

FOR EXAMPLE FOR A DOOR SLIDING LEFT, INSTALL DROP BOLT ON RIGHT.

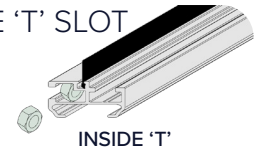
#### ! DOUBLE DOOR ONLY

SLIDE 2 NUTS INTO THE BOTTOM OF THE DOOR FRAME FOR THE DROP BOLT ASSEMBLY.

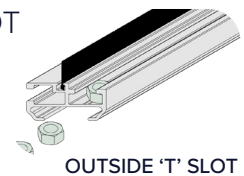


4. USE THE BOLTS TO HELP GUIDE THE NUTS INTO THE 'T' SLOT

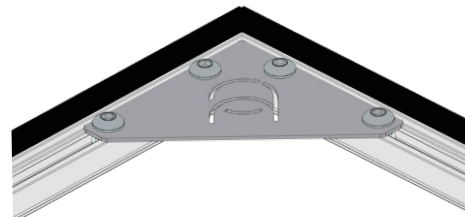
NUTS FOR THE HANDLE & DROP BOLT GO INTO THE OUTSIDE 'T' SLOT



NUTS FOR THE CORNER BRACKETS GO INTO THE INSIDE 'T' SLOT



5. FIX THE MIDDLE BRACKETS AND MIDDLE ALLUMINUM SECTION TO THE OUTER SECTIONS USING THE NUTS YOU HAVE JUST PLACED



6. REPEAT TO ATTACH THE TOP AND BOTTOM SECTIONS OF DOOR PROFILE WITH THE REMAINING CORNER BRACKETS

7. CHECK EVERYTHING IS SQUARE

TIGHTEN



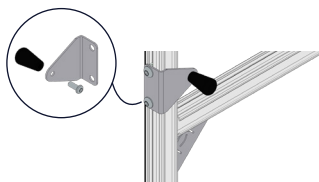
TOOLS NEEDED: 4MM ALLEN KEY, WIRE CUTTERS

NOTE

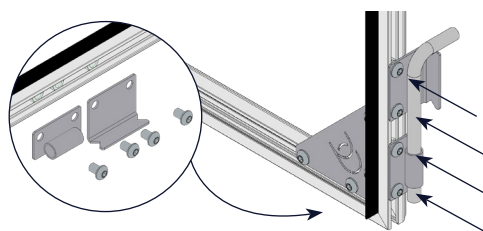
YOU ALSO HAVE A NET PANEL, YOU CAN USE THIS AS AN ALTERNATIVE TO POLYTHENE FOR INCREASED VENTILATION

1. USE WIGGLE WIRE TO FIX THE POLYTHENE INTO THE DOOR FRAME.

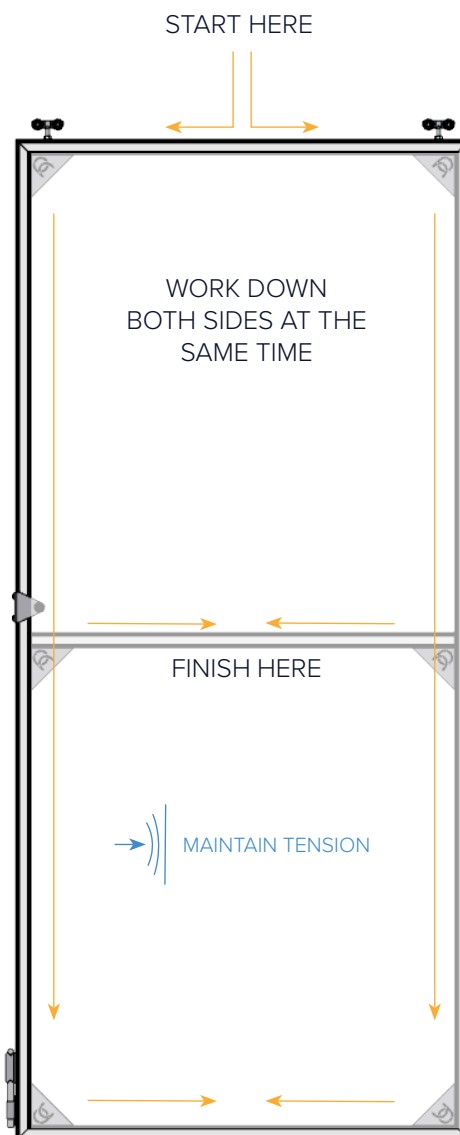
2. ATTACH THE DOOR HANDLE



3. ATTACH THE DROP BOLTS



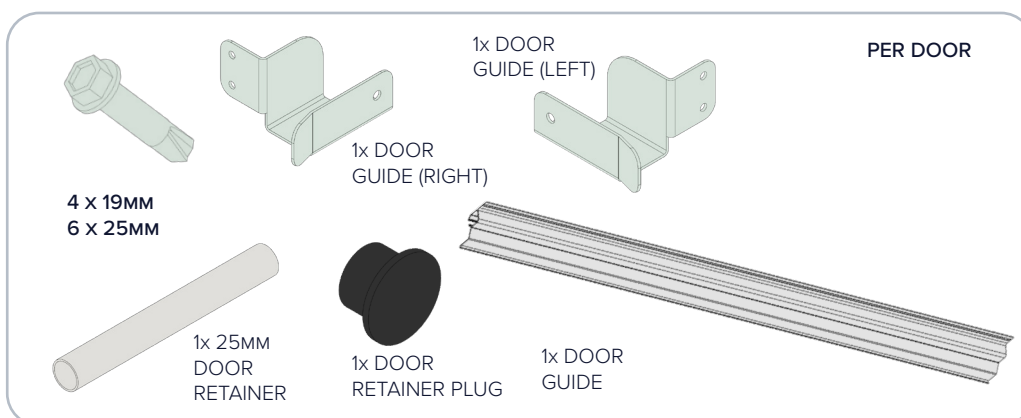
SINGLE DOOR ONLY



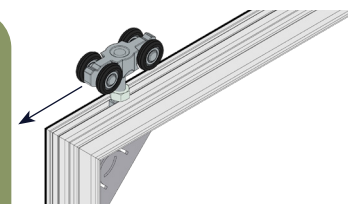
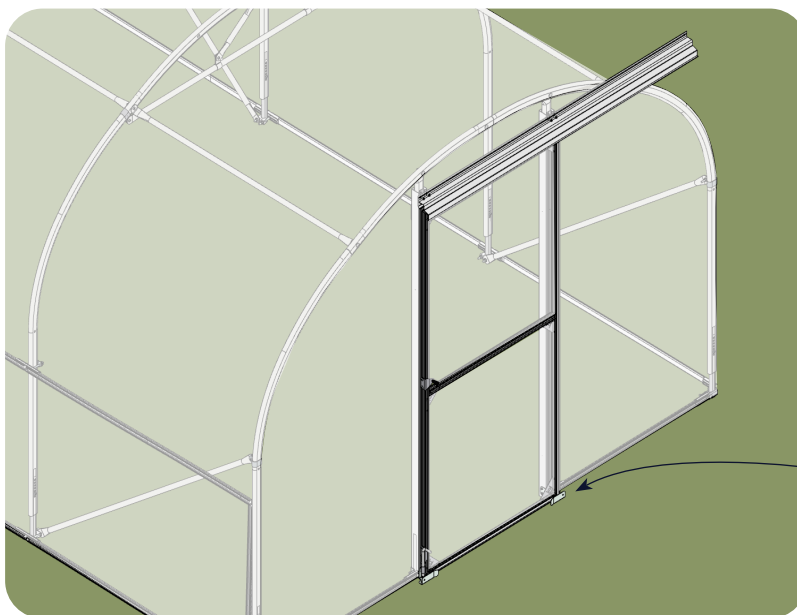
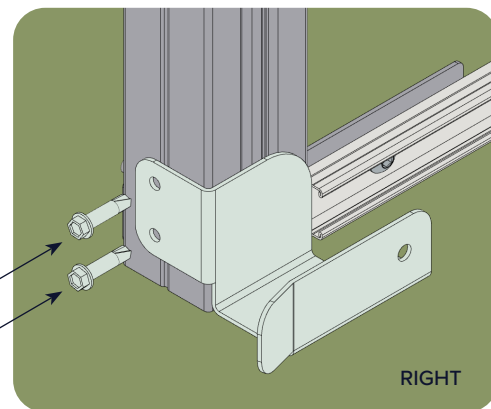
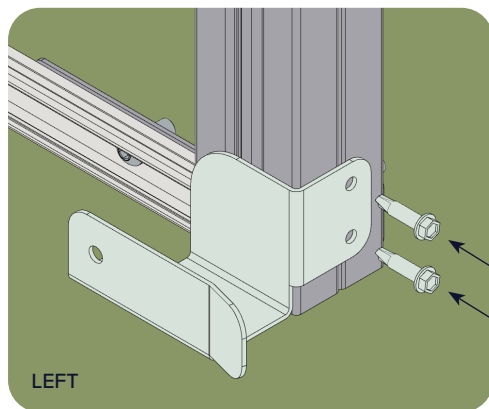
TRIM ANY EXCESS POLYTHENE & WIGGLE WIRE



TOOLS NEEDED: DRILL WITH TEK SCREW BIT, SPIRIT LEVEL, HAMMER



1.

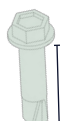


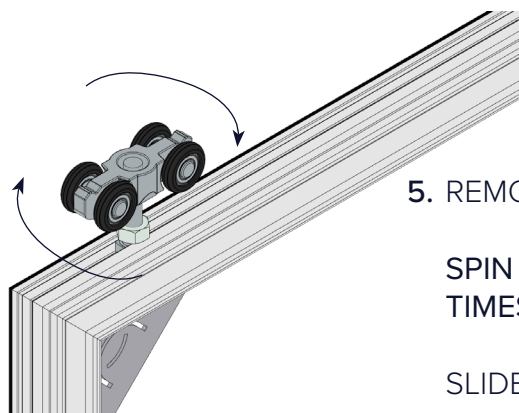
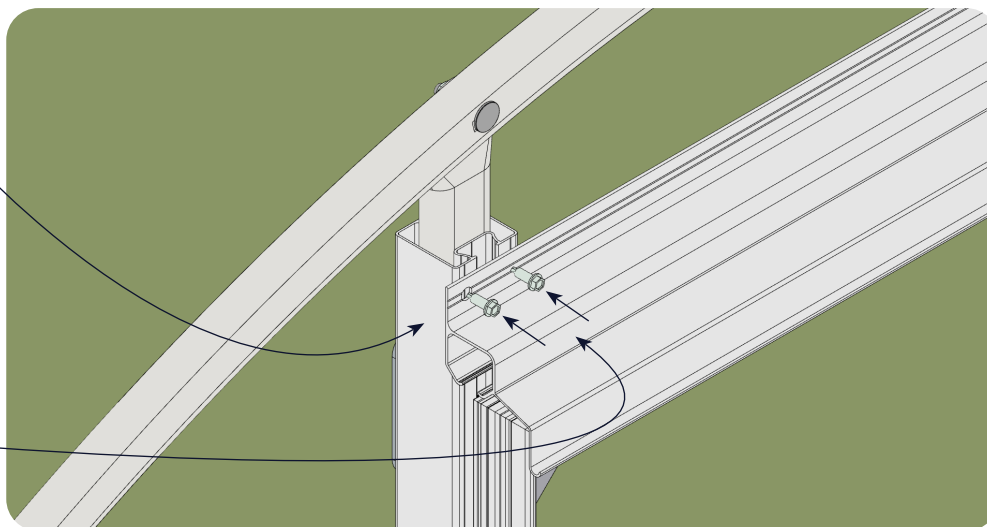
2.

SLIDE DOOR TRACK ONTO DOOR CARRIAGES OF FINISHED DOOR ASSEMBLY.

PLACE ONTO DOOR GUIDES

3. 

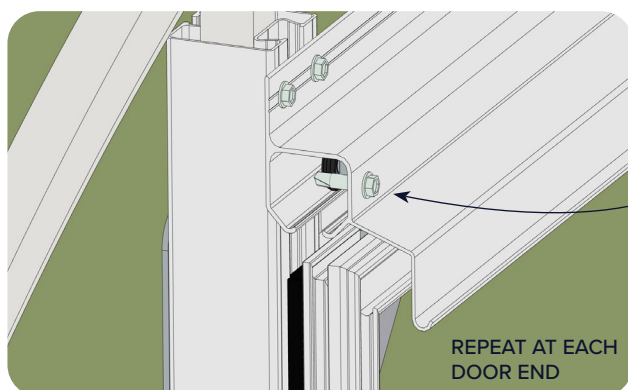
4.  19MM

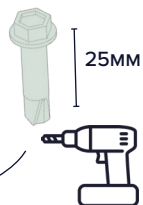


5. REMOVE DOOR FROM TRACK

SPIN ROLLER CARRIAGE CLOCKWISE 4 TIMES

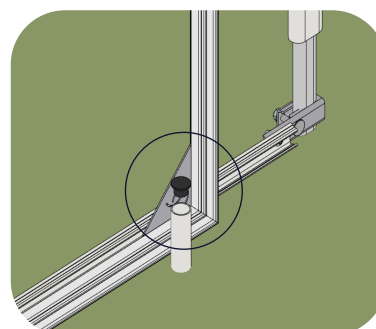
SLIDE DOOR BACK INTO DOOR TRACK



6.  25MM



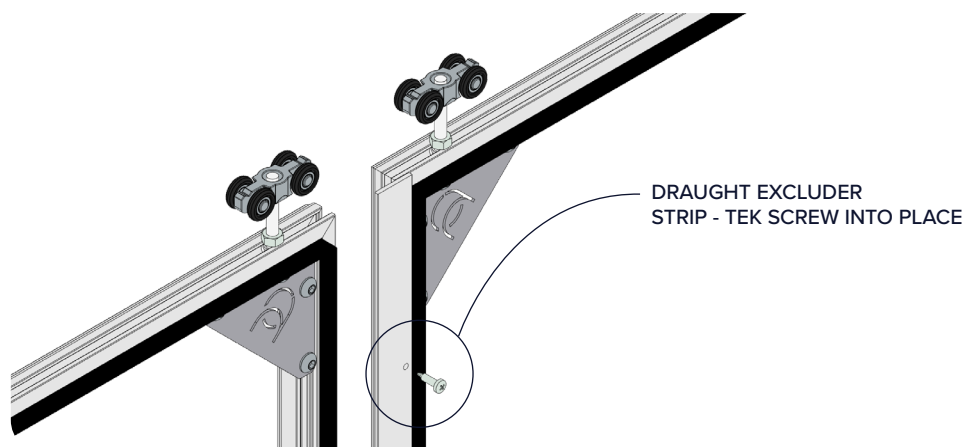
7. HAMMER IN DOOR RETAINER & PLASTIC PLUG



## DOUBLE DOOR BUILD

TO BUILD DOUBLE DOORS, FOLLOW THE INSTRUCTIONS FOR OUR SINGLE DOOR, JUST REPEAT THE PROCESS FOR YOUR SECOND DOOR.

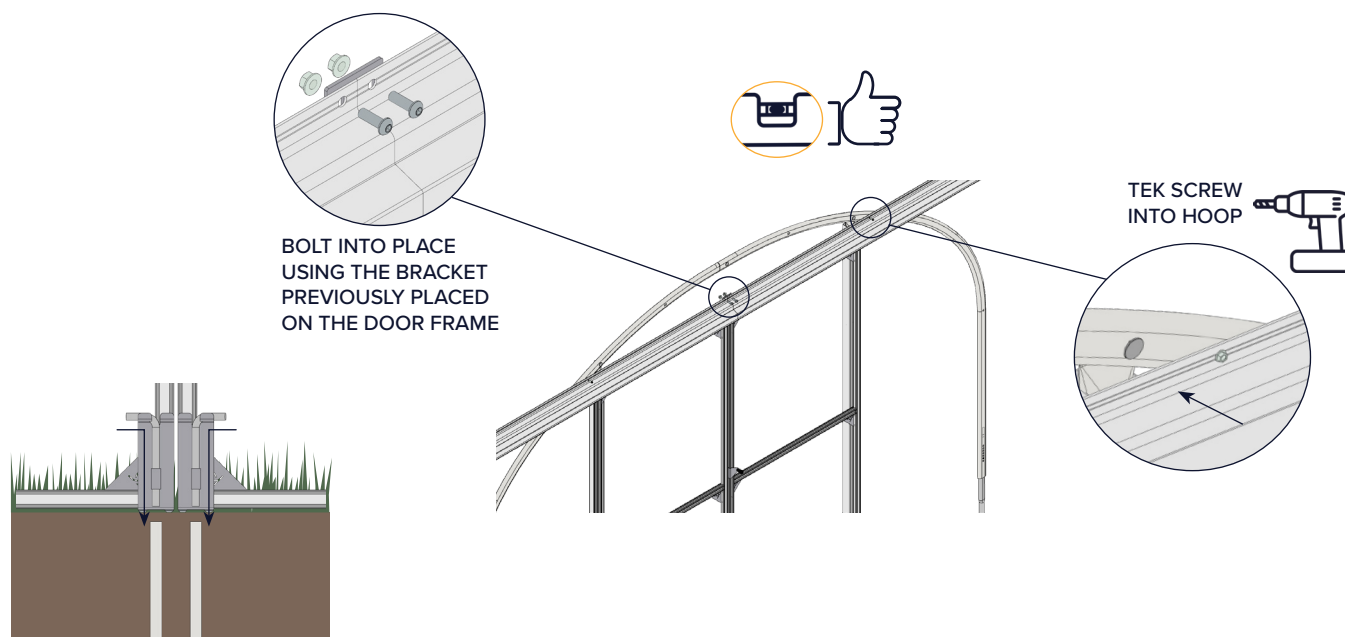
DOUBLE DOORS ARE FITTED WITH A DRAFT EXCLUDER, FIX THIS STRIP BEFORE COVERING.



## DOUBLE DOOR FITTING

THE FITTING PROCESS IS ALSO VERY SIMILAR, FOLLOW THE INSTRUCTIONS FOR THE SINGLE SLIDING DOOR, BUT USE THE DOUBLE DOOR FIXING POINTS HIGHLIGHTED BELOW.

REPEAT THE PROCESS FOR YOUR SECOND DOOR.



DON'T FORGET TO HAMMER IN YOUR DROP BOLT LOCATING TUBES ONCE YOUR DOORS ARE FITTED.

## 42 PVC DOOR

TOOLS NEEDED: WIRE CUTTERS, SHARP KNIFE OR SCISSORS, LADDER

WIGGLE WIRE



PVC DOOR COVER

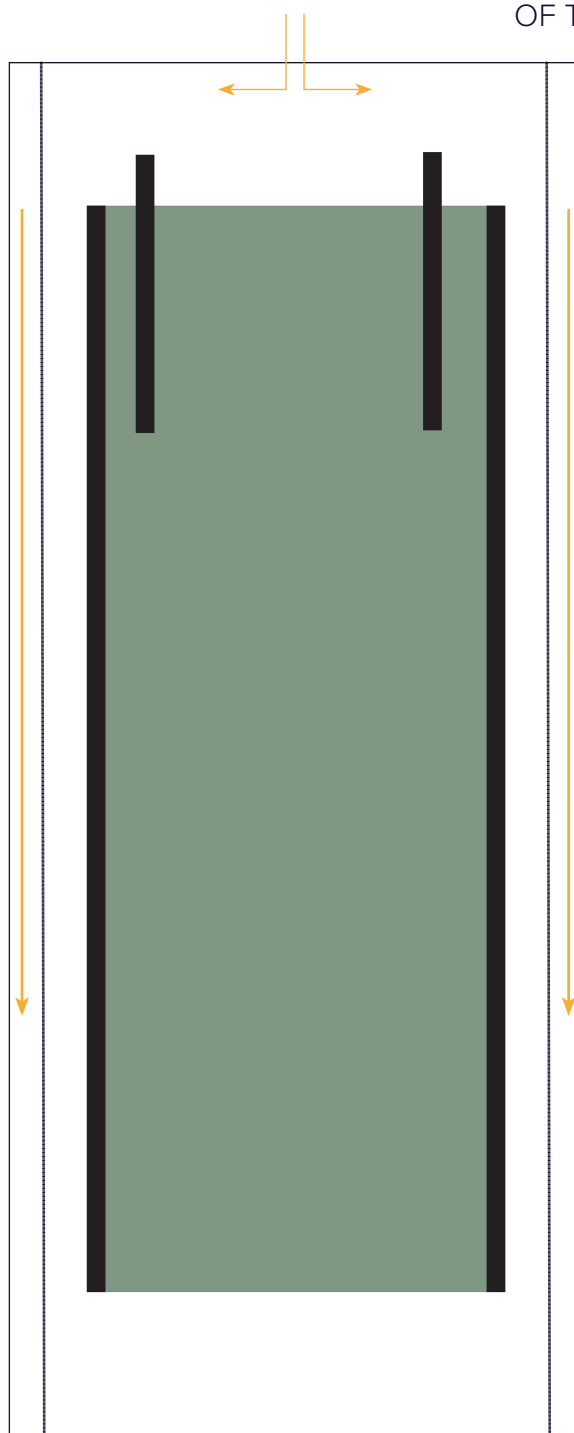
1. PLACE YOUR PVC DOOR WITH THE REMOVABLE PANNEL FACING THE INSIDE OF THE POLYTUNNEL

2. ENSURE YOU HAVE ENOUGH MATERIAL TO COVER THE BOTTOM OF THE DOOR

4. WIGGLE WIRE THE SIDES, WORK DOWN BOTH SIDES AT THE SAME TIME

3. WIGGLE WIRE THE TOP SECTION INTO YOUR DOOR FRAME

5. ONCE HAPPY TRIM OFF ANY EXCESS FABRIC & WIGGLE WIRE



WE CONSTANTLY STRIVE TO IMPROVE OUR PRODUCTS  
AND SERVICES.

WE WELCOME ANY FEEDBACK ABOUT OUR BRAND  
NEW EASY BUILD.

DELIVERY

DESIGN

BUILD QUALITY

INSTRUCTIONS

SUPPORT & CUSTOMER SERVICES

PLEASE EMAIL:

MARKETING@NPSTRUCTURES.CO.UK



**Prefer to watch?**

Follow along with our video guide for  
visual instructions to make building your  
EasyBuild polytunnel even easier.





### Help & Advice



01282 873 120



[info@npstructures.co.uk](mailto:info@npstructures.co.uk)



[northernpolytunnels.co.uk](http://northernpolytunnels.co.uk)



Built your EasyBuild?  
We'd love to see it

