



easy**b**uild

ASSEMBLY INSTRUCTIONS



## 2 BEFORE YOU BEGIN

THANK YOU FOR PURCHASING YOUR EASYBUILD POLYTUNNEL

BEFORE YOU BEGIN TO BUILD, WE RECOMMEND ENSURING ALL PARTS ARE PRESENT AND HAVING A THOROUGH READ OF THE INSTRUCTIONS.

YOUR HEALTH AND SAFETY IS IMPORTANT TO US, PLEASE TAKE CARE WHEN CONSTRUCTING YOUR POLYTUNNEL

NEED HELP OR ADVICE ALONG THE WAY?

CALL OUR TEAM ON 01282 873120  
EMAIL [INFO@NPSTRUCTURES.CO.UK](mailto:INFO@NPSTRUCTURES.CO.UK)

FAILURE TO FOLLOW THESE INSTRUCTIONS MAY COMPROMISE THE STRUCTURAL INTEGRITY OF YOUR POLYTUNNEL.

NP STRUCTURES LTD ACCEPTS NO LIABILITY FOR DAMAGE RESULTING FROM USE NOT IN ACCORDANCE WITH THESE INSTRUCTIONS.



### TOOLS

#### SUPPLIED

4MM ALLEN KEY  
5MM ALLEN KEY  
TEX SCREW BIT  
SCREW ANCHOR INSERTION BAR



#### REQUIRED

SPADE  
WIRE CUTTERS  
STRING  
SPIRIT LEVEL  
TAPE MEASURE  
STANLEY KNIFE  
SCISSORS  
LADDERS  
DRILL  
13MM SPANNER OR SOCKET  
HAMMER  
MARKING STICKS/CANES

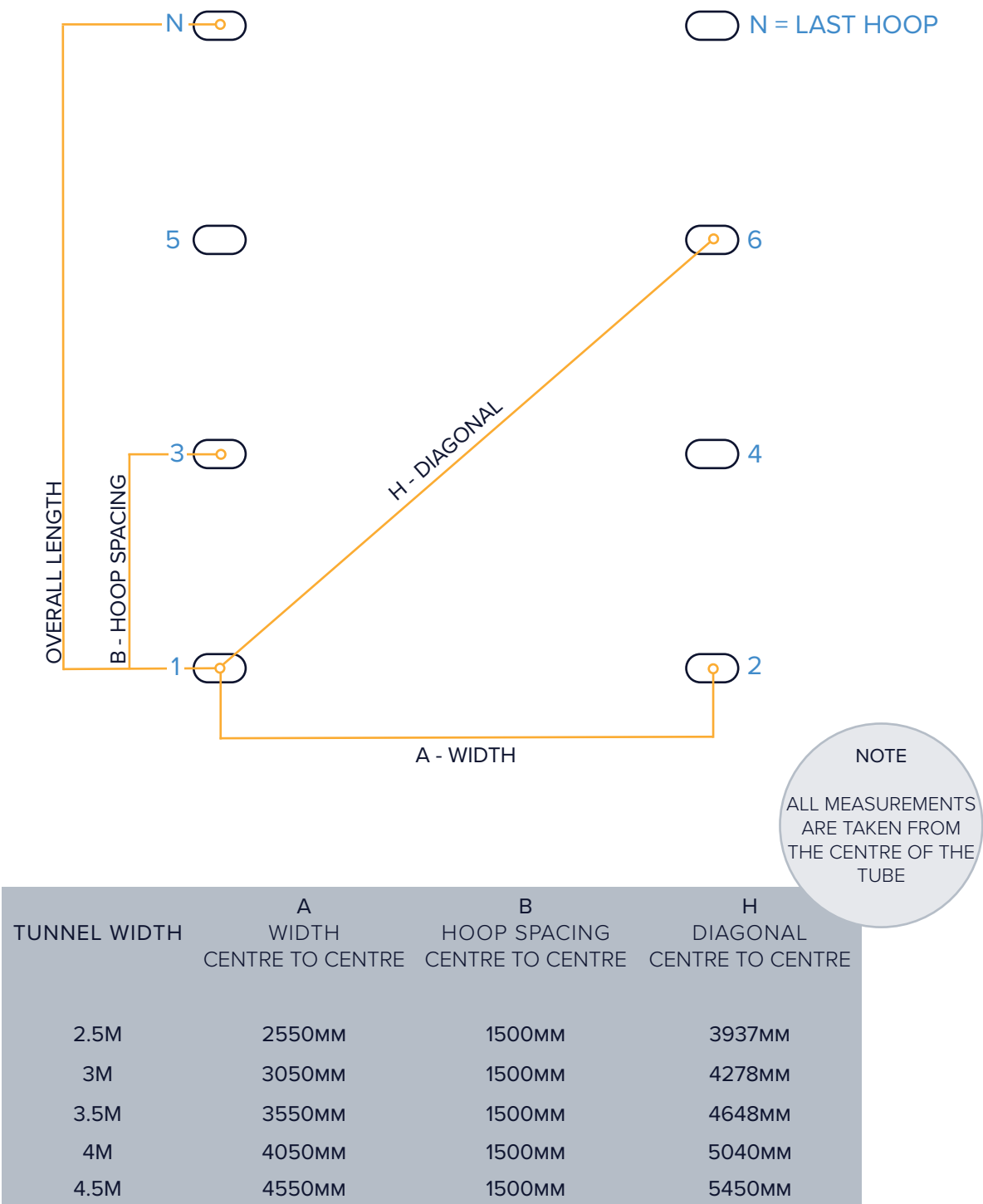
10MM MASONRY DRILL BIT  
(BASE PLATES ONLY)

FOUNDATIONS .....	4
BASE RAILS .....	7
HOOPS .....	10
RIDGE BARS .....	11
CORNER BRACING .....	12
DOOR FRAMES TOP .....	14
DOOR FRAMES BOTTOM (SOIL) .....	15
DOOR FRAMES BOTTOM (BASE PLATES) .....	19
BRACE BARS .....	22
SIDE VENTILATION .....	23
COVERING (BASE RAIL) .....	26
COVERING (TRENCHED ONLY) .....	32
SLIDING DOOR .....	36
DOOR FITTING .....	39
DOUBLE DOORS .....	41
PVC DOOR .....	42

TOOLS NEEDED: TAPE MEASURE, STRING, SPIRIT LEVEL, MARKERS/CANES

USE THIS TABLE TO HELP YOU PLACE YOUR FOUNDATIONS

DIAGRAM FOR ILLUSTRATIVE PURPOSES ONLY, REPEAT THE PROCESS FOR THE NUMBER OF HOOPS YOU HAVE ORDERED (1 PER 1.5M INCREMENT)





## METHOD:

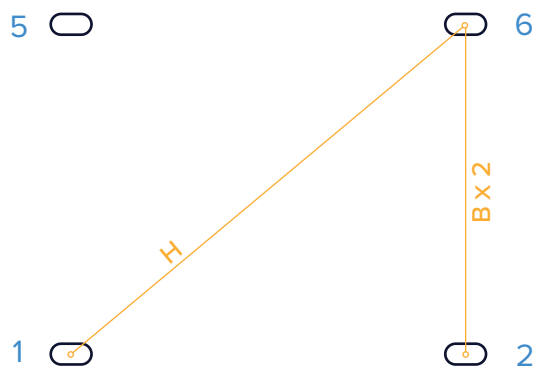
YOU MAY WISH TO MARK OUT YOUR FOUNDATION PLACEMENT WITH MARKERS OR STAKES BEFORE POSITIONING THE ACTUAL FOUNDATIONS.



### 1. POSITION FOUNDATIONS 1 & 2

CHECK **A** IS CORRECT

CHECK ALIGNMENT OF THE TWO HOOPS

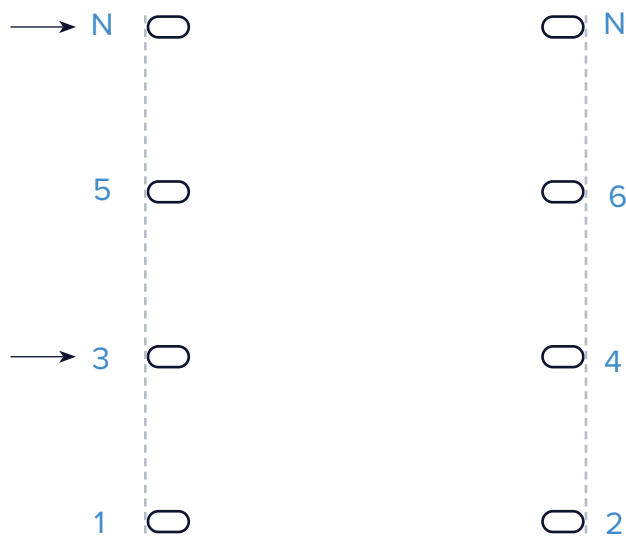


### 2. POSITION FOUNDATION 6

CHECK **H** IS CORRECT

CHECK **B** IS CORRECT (SHOULD EQUAL  $B \times 2$ )

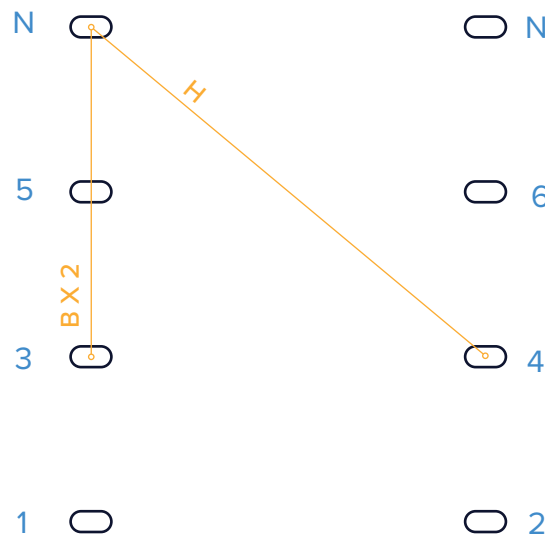
REPEAT FOR FOUNDATION 5



### 3. STRINGLINE THE LENGTH OF THE TUNNEL FROM 1 & 2 TO **N** (LAST FOUNDATIONS)

THE STRINGLINE SHOULD TOUCH THE OUTER EDGE OF YOUR FOUNDATION TUBES

USE THE STRINGLINE TO HELP YOU PLACE YOUR LAST FOUNDATIONS (**N**) AS WELL AS ANY OTHER FOUNDATIONS (IE. 3 & 4)



### 4. CHECK ALIGNMENT OF THE FAR END OF YOUR POLYTUNNEL:

CHECK **H** IS CORRECT

CHECK **B** IS CORRECT

REPEAT ON EACH END FOUNDATION

## 6 FOUNDATIONS (CONTINUED)

### TOOLS NEEDED:

SCREW ANCHORS - SPIRIT LEVEL, TAPE MEASURE, SCREW ANCHOR INSERTION BAR

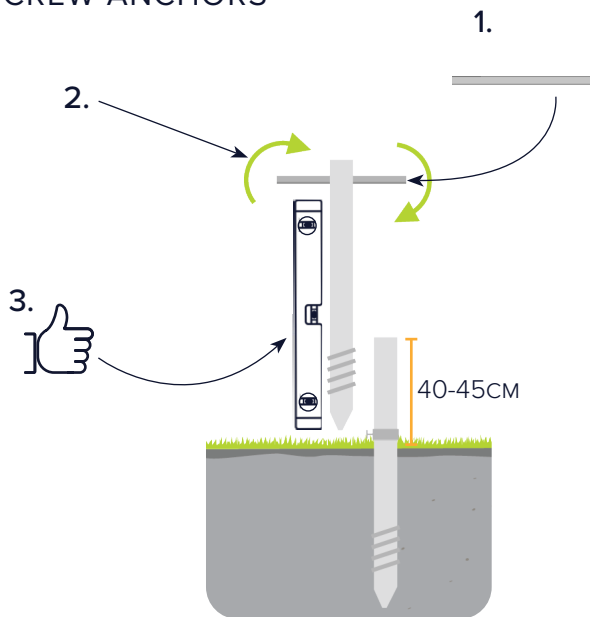
BASE PLATES - DRILL, 10MM MASONRY DRILL BIT, HAMMER & 1 X 13MM SPANNER/SOCKET

TRADITIONAL GROUND TUBES - HAMMER, SPIRIT LEVEL & TAPE MEASURE

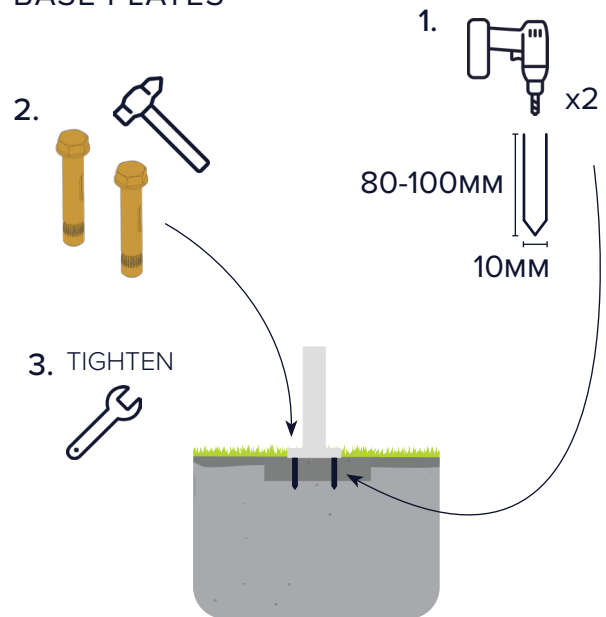
CONCRETE GROUND TUBES - SPADE, CONCRETE/POSTCRETE, SPIRIT LEVEL & TAPE MEASURE

SET YOUR FOUNDATIONS USING THE METHOD BELOW.

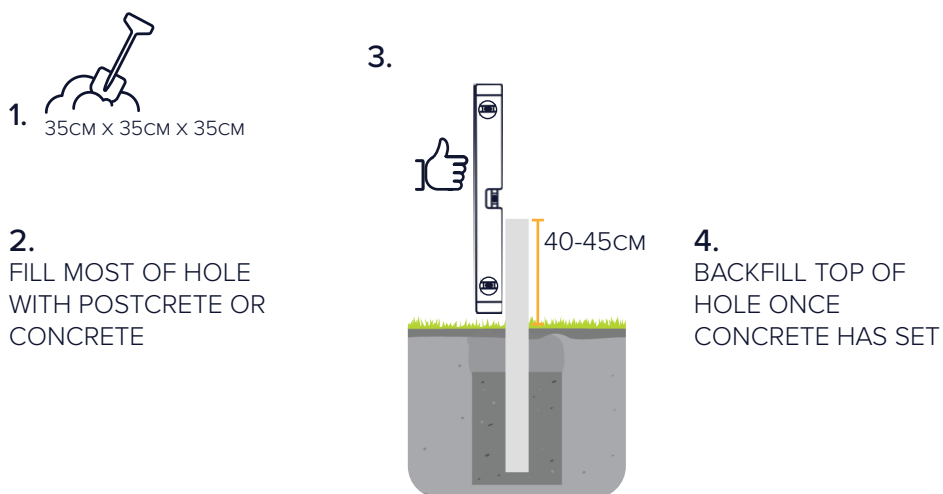
#### SCREW ANCHORS



#### BASE PLATES



#### CONCRETE FOUNDATION

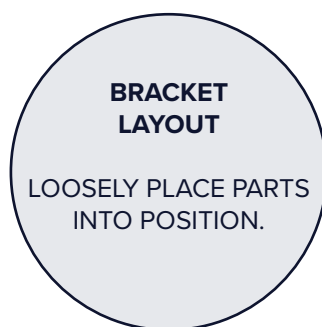
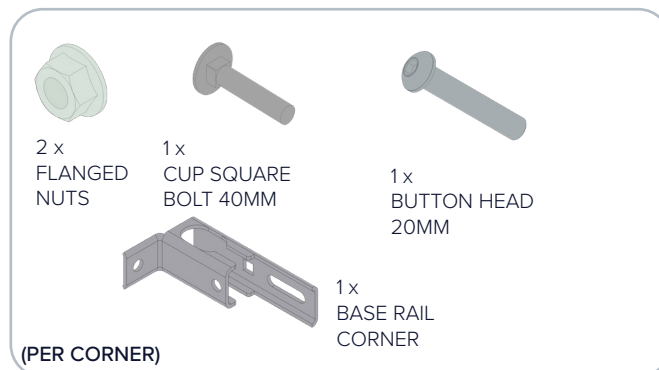
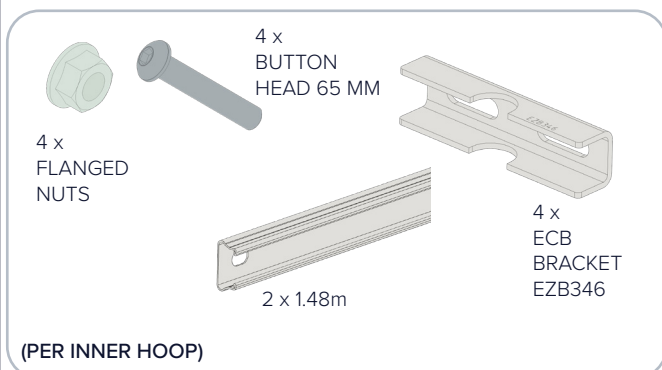


TOOLS NEEDED: SPIRIT LEVEL, 1 X 13MM SPANNER/SOCKET, ALLEN KEY

PACKS NEEDED: EZB203, EZB202

### INNER HOOPS = A

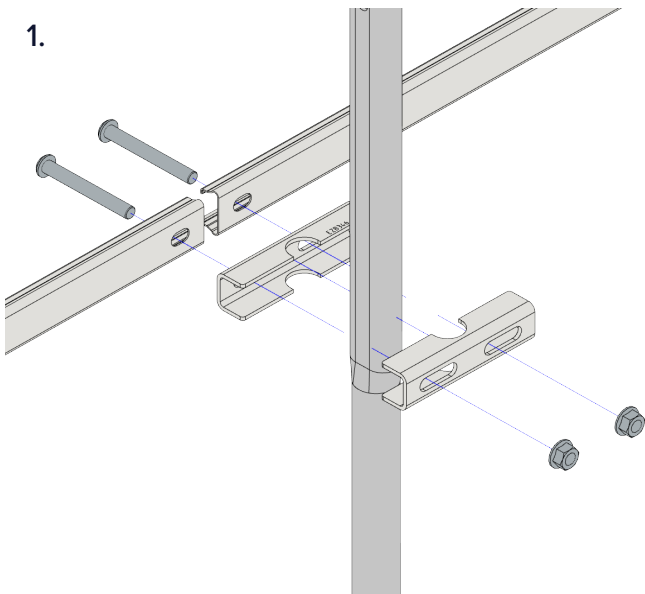
### END HOOPS = B



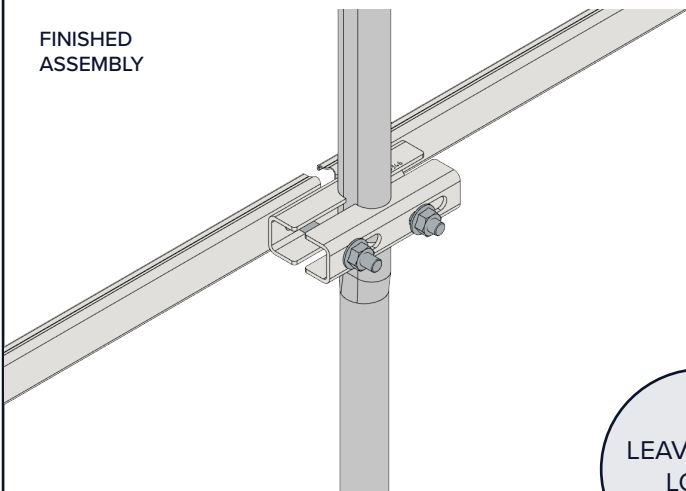


INNER HOOPS = A

1.



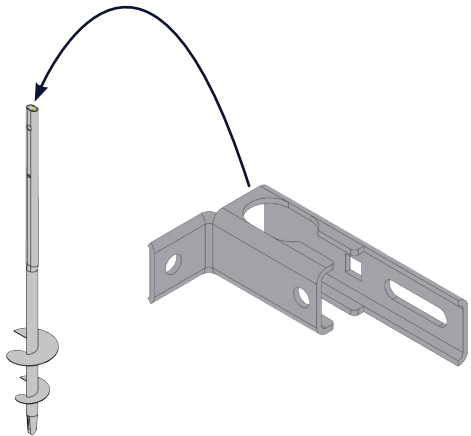
FINISHED  
ASSEMBLY



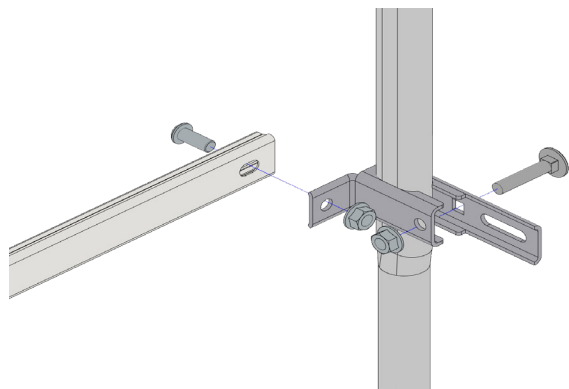
REPEAT FOR ALL INNER HOOPS

END HOOPS = B

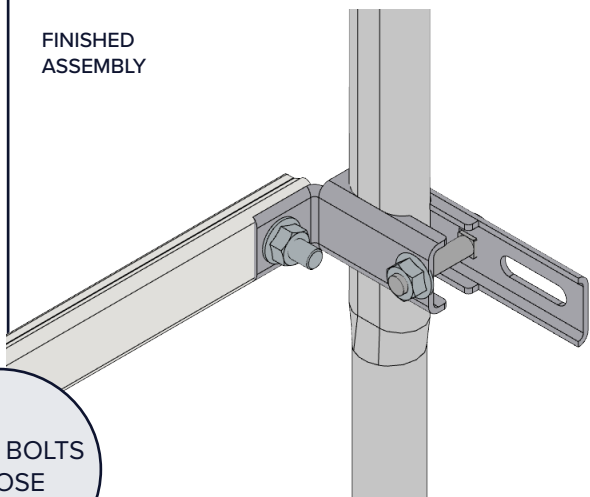
1.



2.



FINISHED  
ASSEMBLY



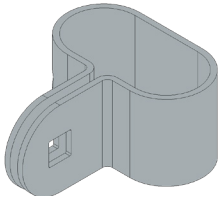
LEAVE BOLTS  
LOOSE

REPEAT FOR ALL END HOOPS

TOOLS NEEDED: SPIRIT LEVEL

PACKS NEEDED: EZB200

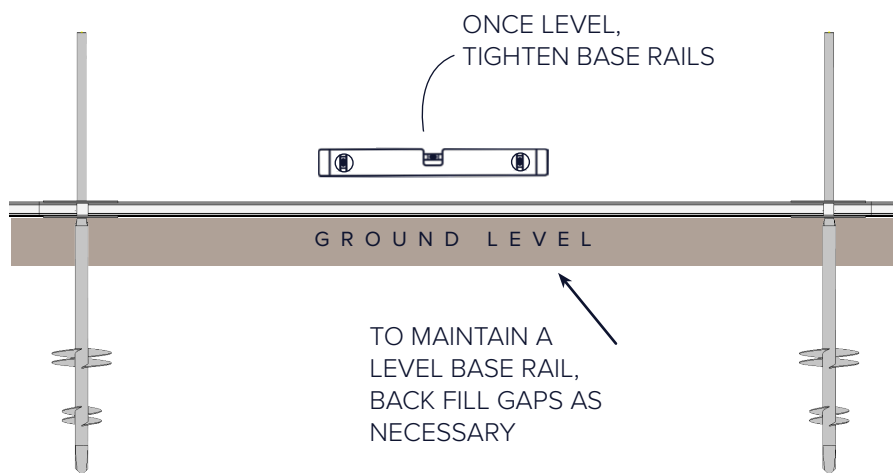
4 x  
KEYHOLE  
CLAMPS



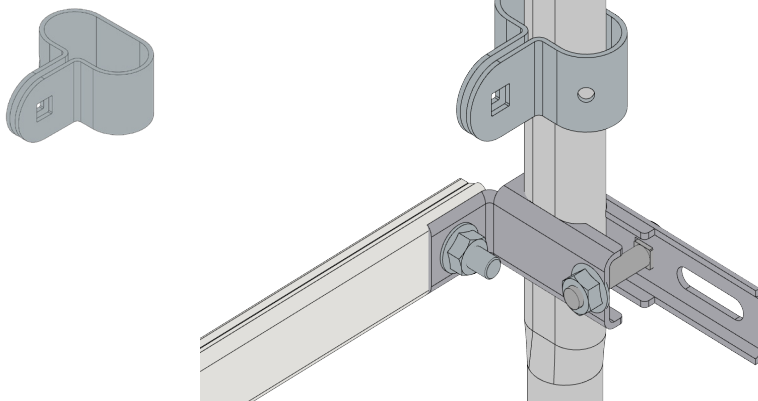
NOTE

MAINTAINING A  
LEVEL BASERAIL IS  
ONLY OF PARTICULAR  
IMPORTANCE IF YOU  
HAVE SIDE  
VENTILATION

1.

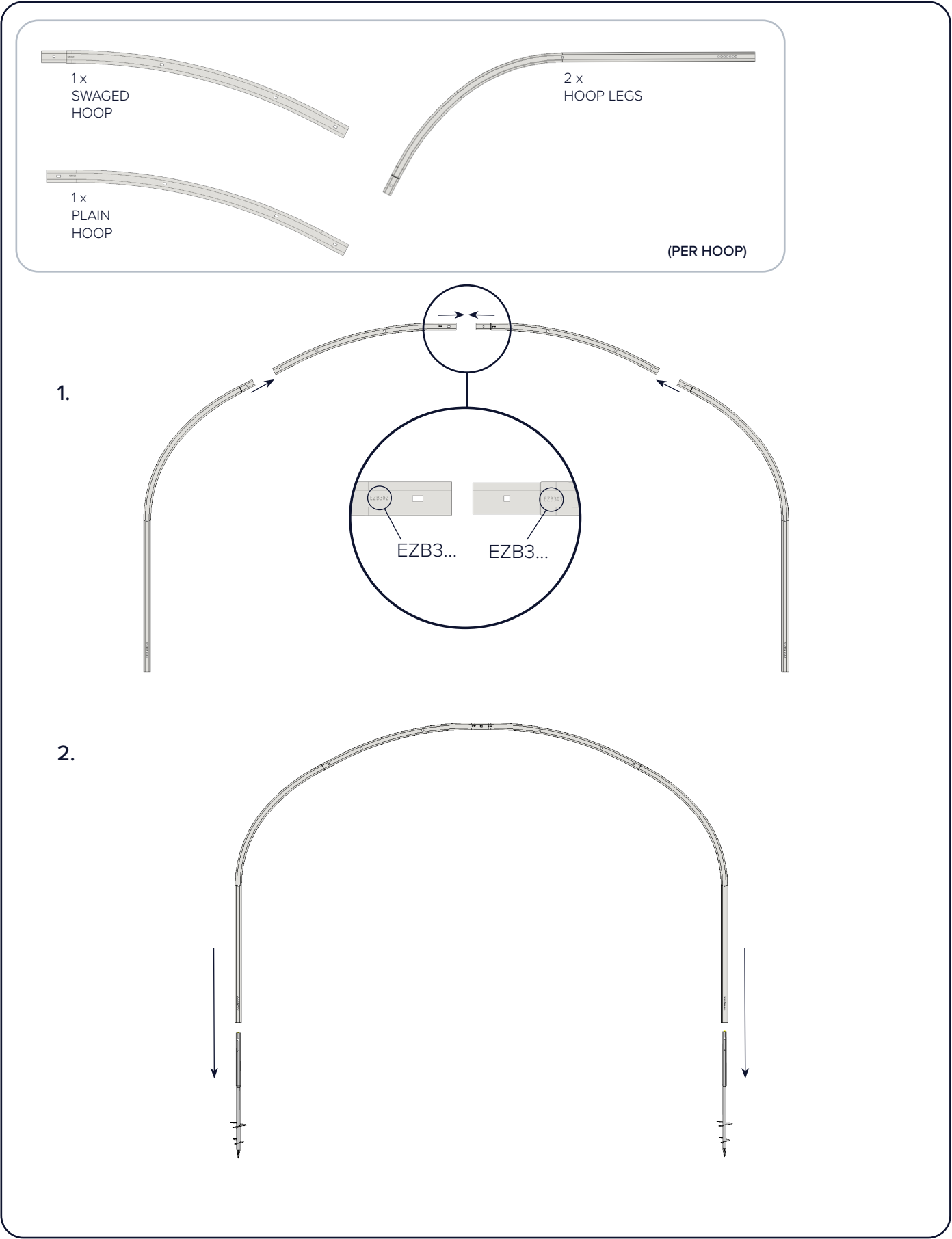


2.



ADD KEYHOLE CLAMPS TO ALL  
END HOOPS  
(USED TO FIX CORNER BRACING LATER)

TOOLS NEEDED: NONE



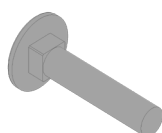


TOOLS NEEDED: 1 x 13MM SPANNER/SOCKET

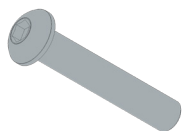
## INNER HOOPS = A



2 x  
FLANGED  
NUTS



1 x  
CUP SQUARE  
BOLTS 40MM



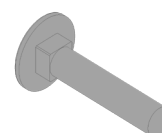
2 x  
BUTTON  
HEAD BOLTS  
45mm

FOR 2 RIDGES

## END HOOPS = B



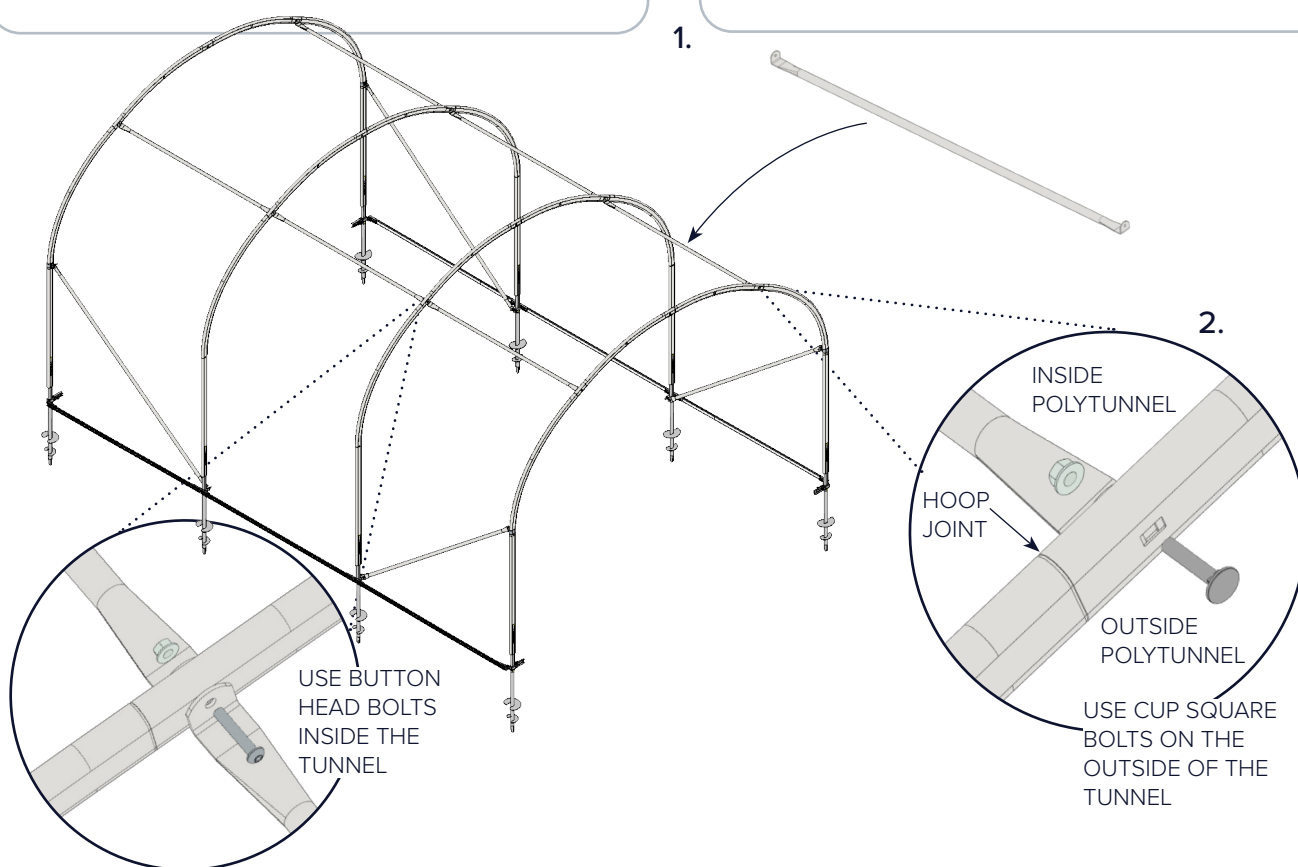
3 x  
FLANGED  
NUTS



3 x  
CUP SQUARE  
BOLTS 40MM

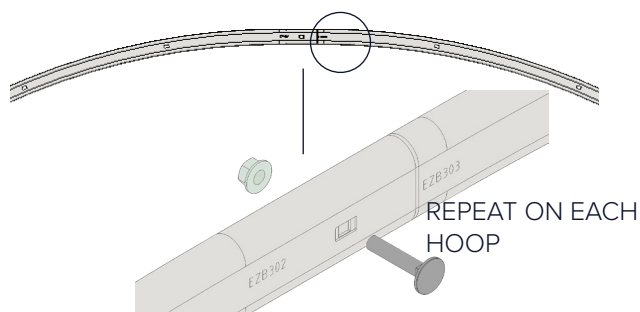
PER END HOOP

1.

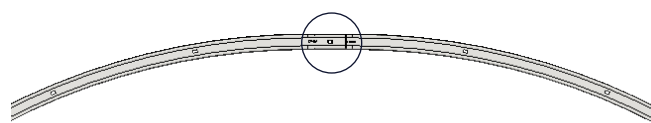


2.

3A. IF NO ADDITIONAL RIDGE BARS PURCHASED:



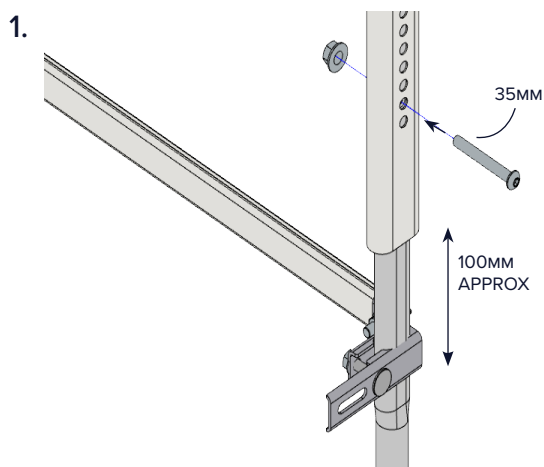
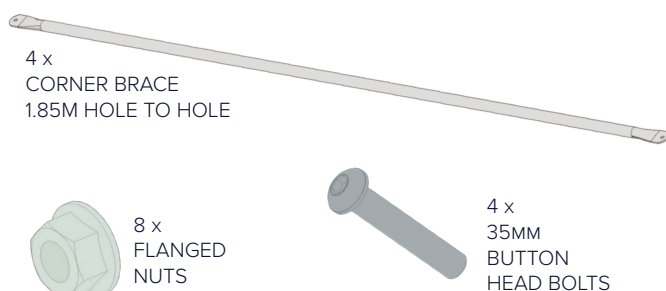
3B. IF ADDITIONAL RIDGE BARS PURCHASED, INSTALL AT THIS POINT. RIDGE BARS CAN BE PLACED ANYWHERE, BUT SOME HOLES MAY BE SHARED WITH A DOOR



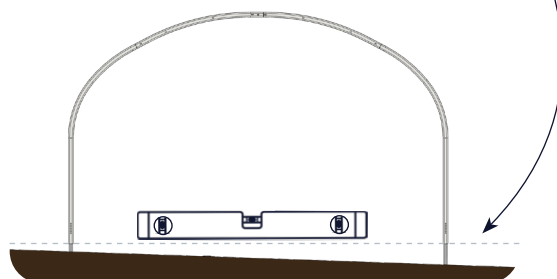
IF YOU HAVE NOT PLACED A RIDGE BAR IN THE CENTRE HOLE, COMPLETE STEP 3A

## 12 CORNER BRACING

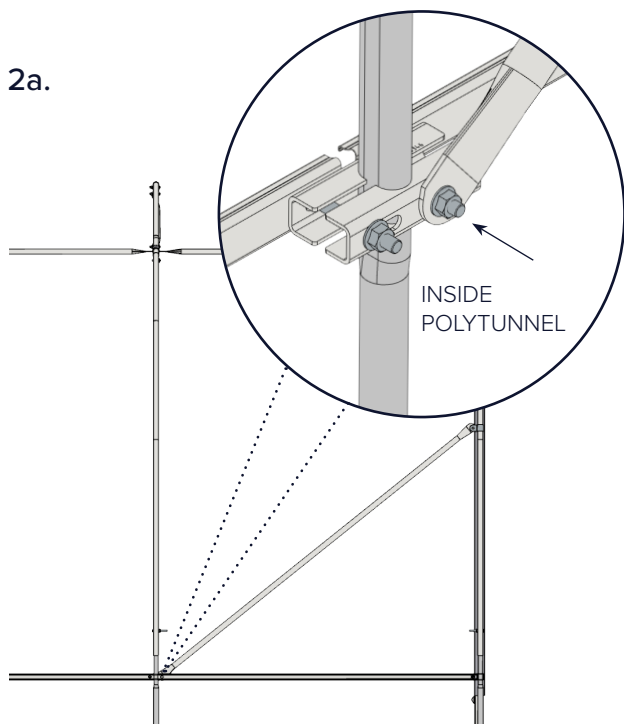
TOOLS NEEDED: 1 x 13MM SPANNER/SOCKET, 4MM ALLEN KEY, SPIRIT LEVEL



**!** IF THE GROUND IS OUT OF LEVEL ACCROSS THE WIDTH OF THE POLYTUNNEL USE THE END HOOPS TO LEVEL THE POLYTUNNEL.

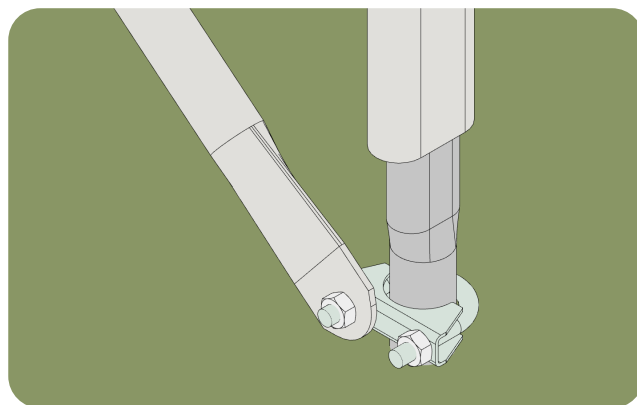


2a.

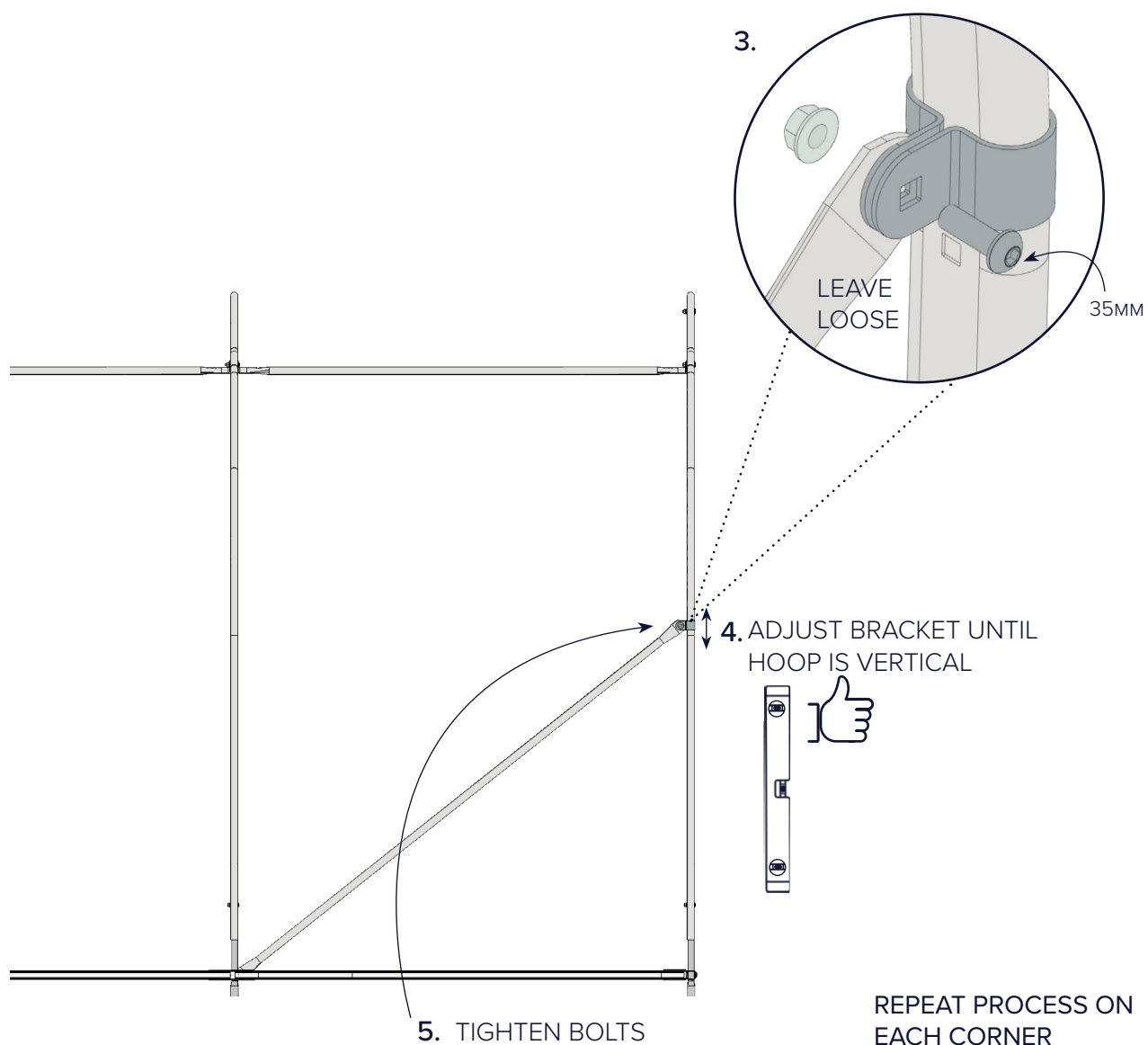


2b.

IF YOU ARE TRENCHING YOUR COVER - USE THE EXHAUST CLAMP PROVIDED WITH YOUR FOUNDATION TO ATTACH THE CORNER BRACKET TO THE HOOP



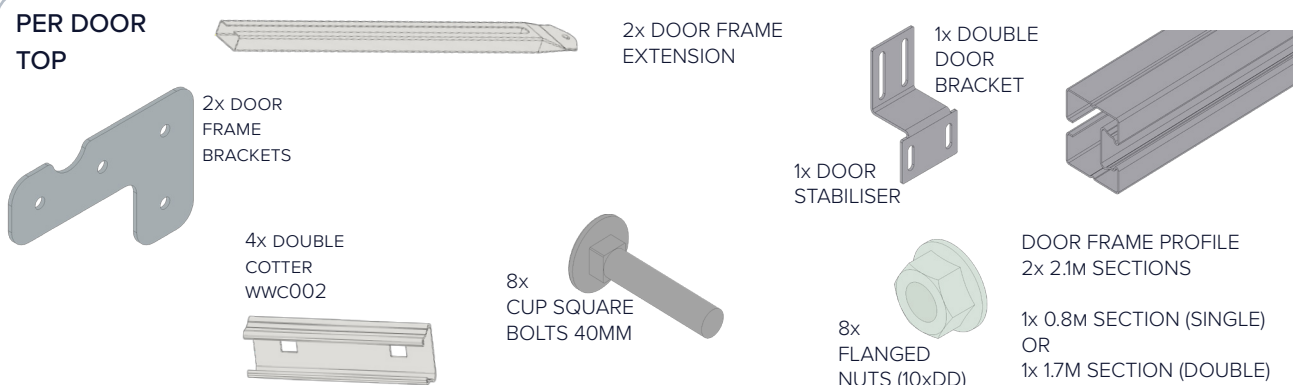
PACKS NEEDED: EZB200





TOOLS NEEDED: 13MM SPANNER/SOCKET, DRILL, TEK SCREW BIT, STRING LINE, SPADE, TAPE MEASURE, SPIRIT LEVEL  
 PACKS NEEDED: EZB206

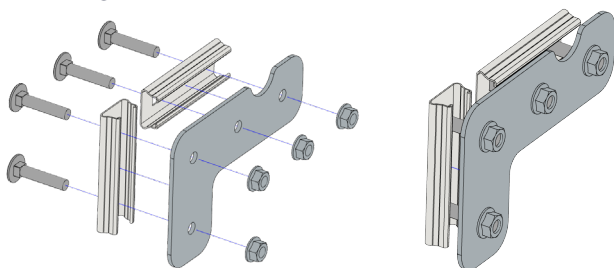
# PER DOOR TOP



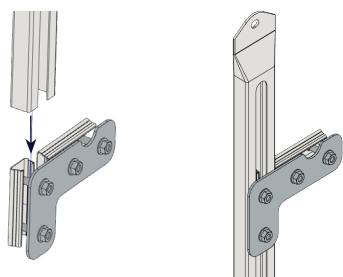
**! DOUBLE DOOR ONLY**  
 SLIDE AN ADDITIONAL TWO COTTERS & CUP SQUARE BOLTS INTO THE LINTEL.

ATTACH THE DOUBLE DOOR BRACKET IN THE CENTRE OF THE LINTEL.

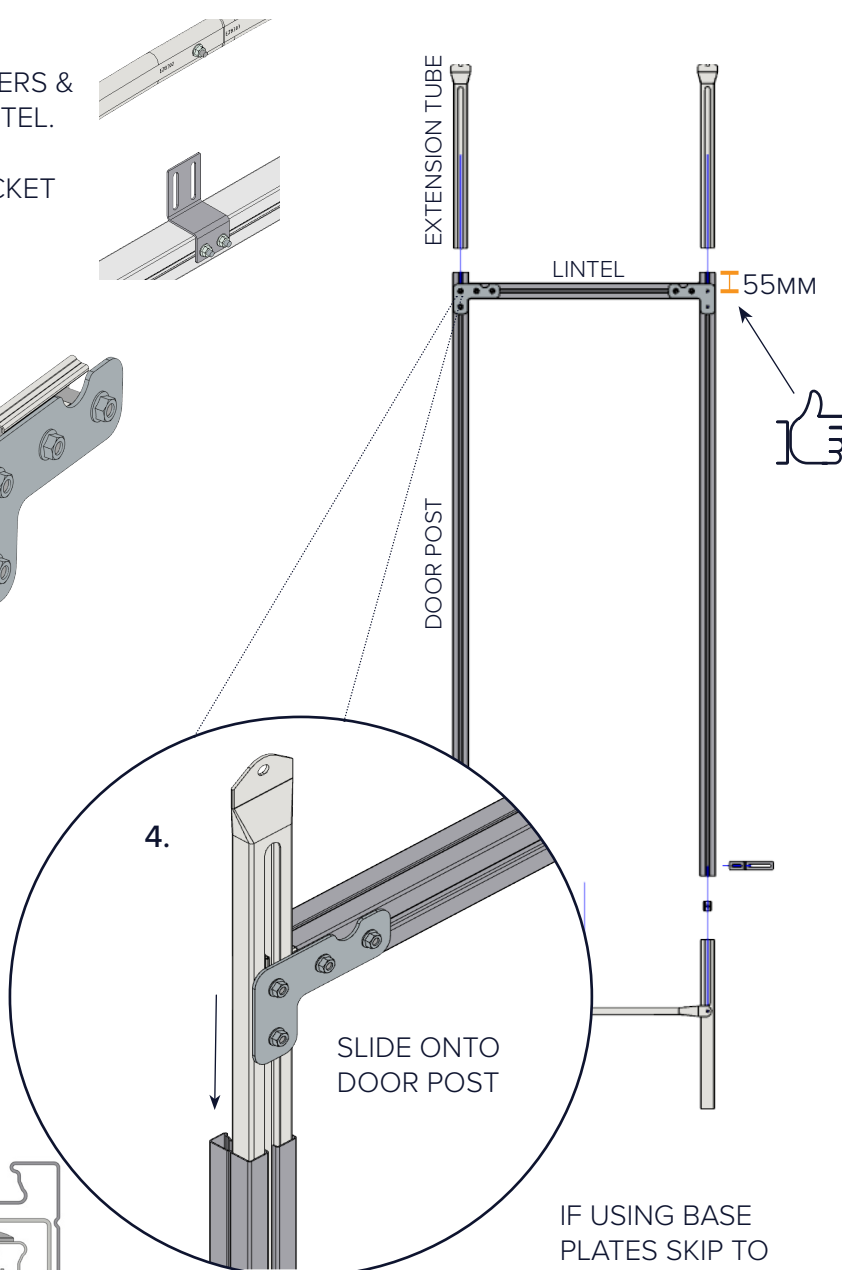
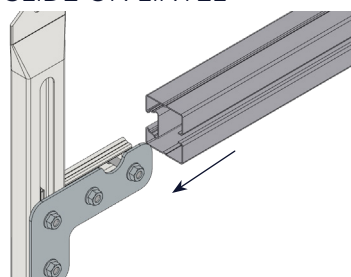
## 1. LOOSELY ASSEMBLE BRACKET



## 2. SLIDE BRACKET ONTO EXTENSION TUBE



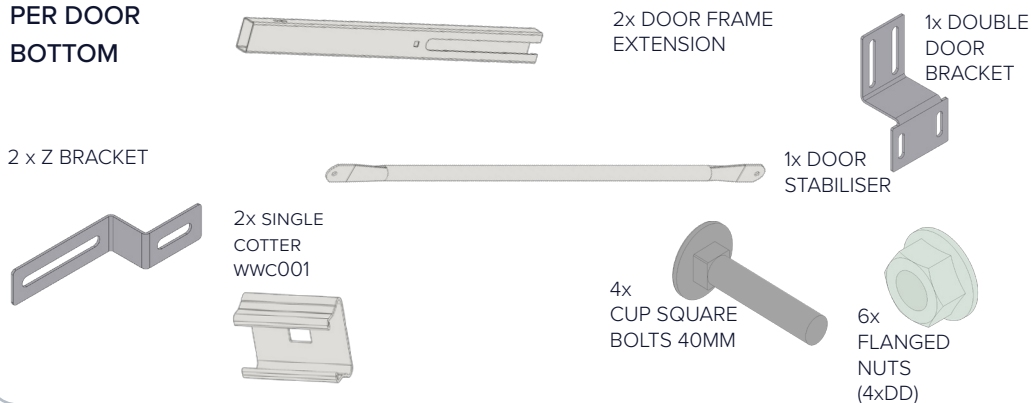
## 3. SLIDE ON LINTEL



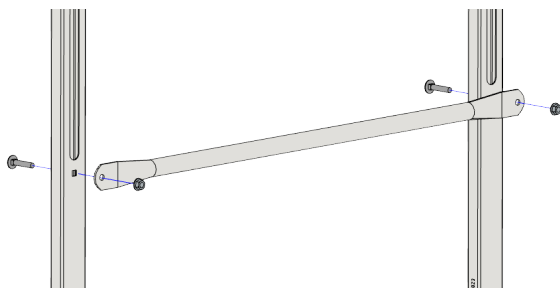
IF USING BASE PLATES SKIP TO PAGE 19

**TOOLS NEEDED:** 13MM SPANNER/SOCKET, DRILL, TEK SCREW BIT, STRING LINE, SPADE,  
TAPE MEASURE, SPIRIT LEVEL **PACKS NEEDED:** EZB206

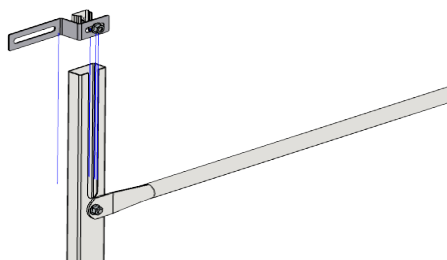
**PER DOOR  
BOTTOM**



1.

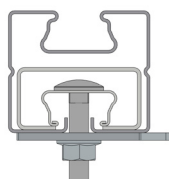
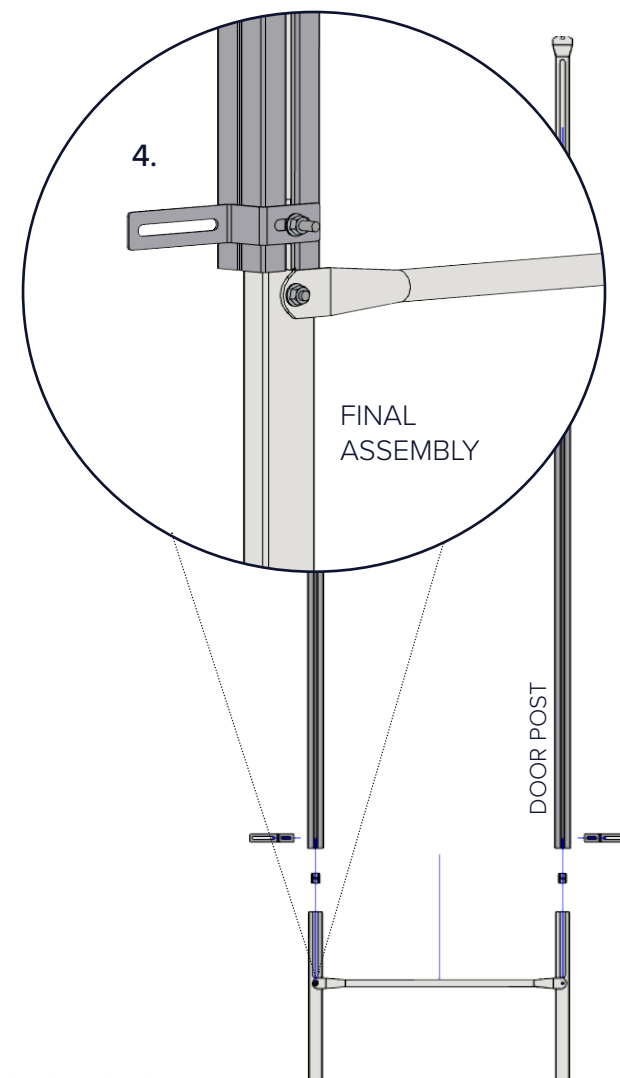
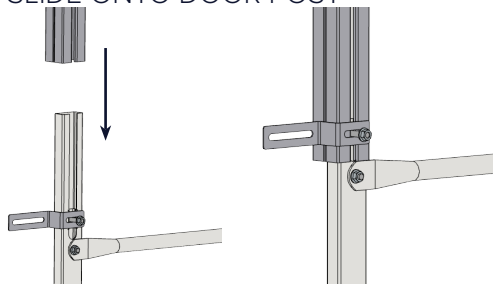


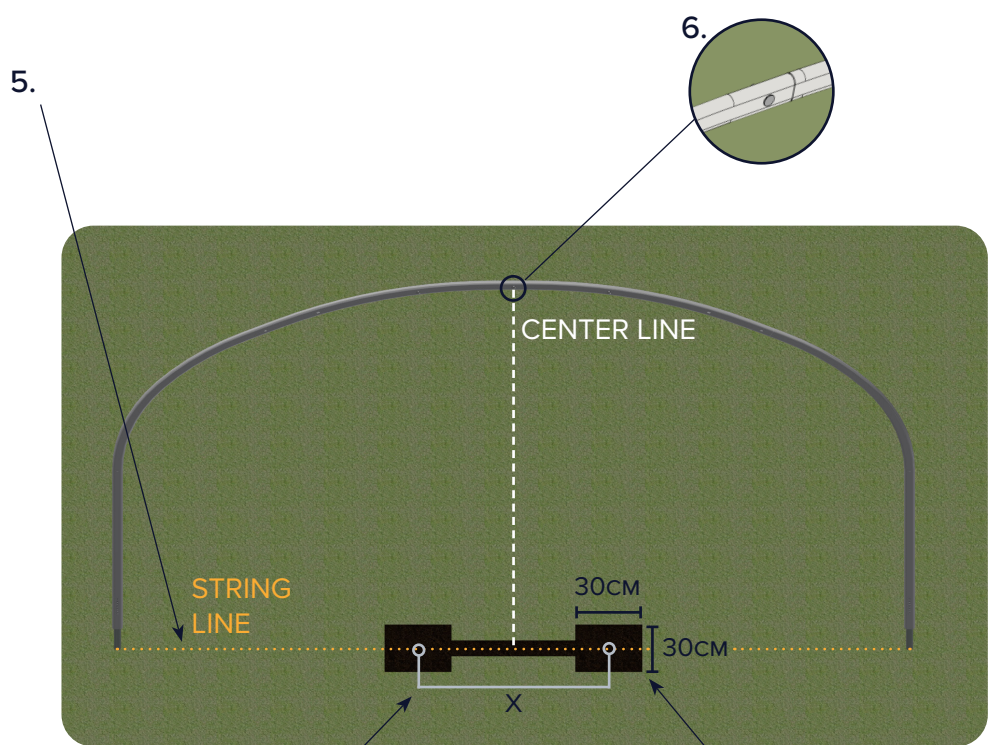
2. SLIDE COTTER, BOLT & Z BRACKET ON EXTENSION TUBE



REPEAT STEPS 1 & 2 FOR BOTH SIDES BEFORE MOVING ON TO STEP 3

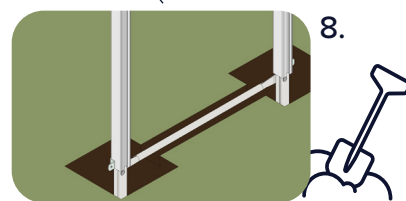
3. SLIDE ONTO DOOR POST



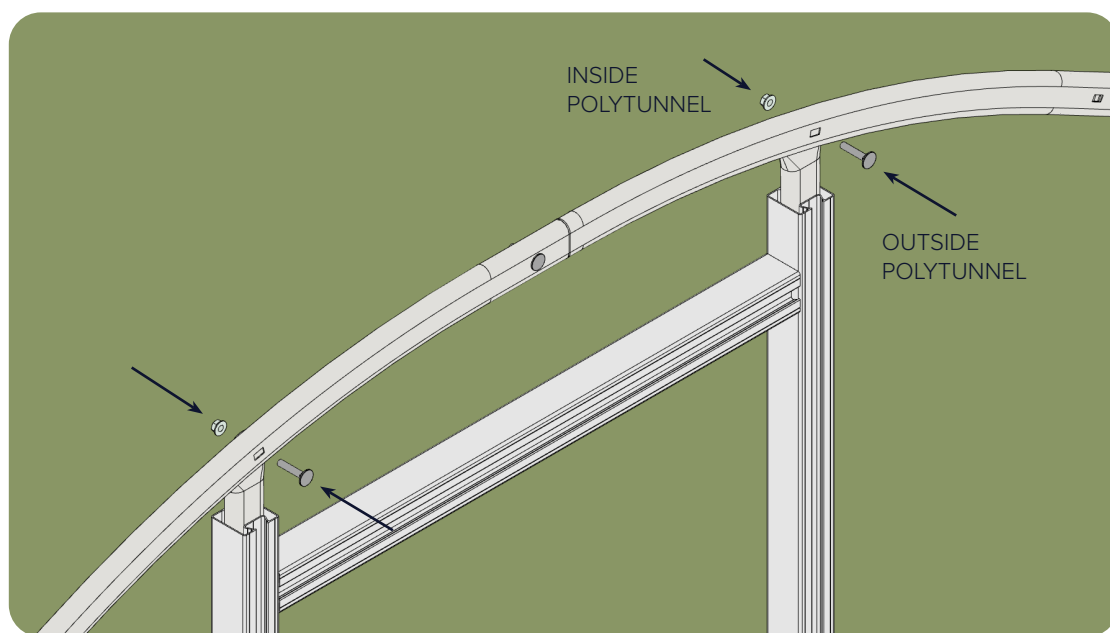


7.  
MEASURE

SINGLE DOOR X = 85cm  
DOUBLE DOOR X = 175cm



9.

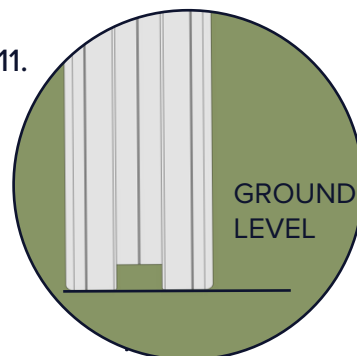
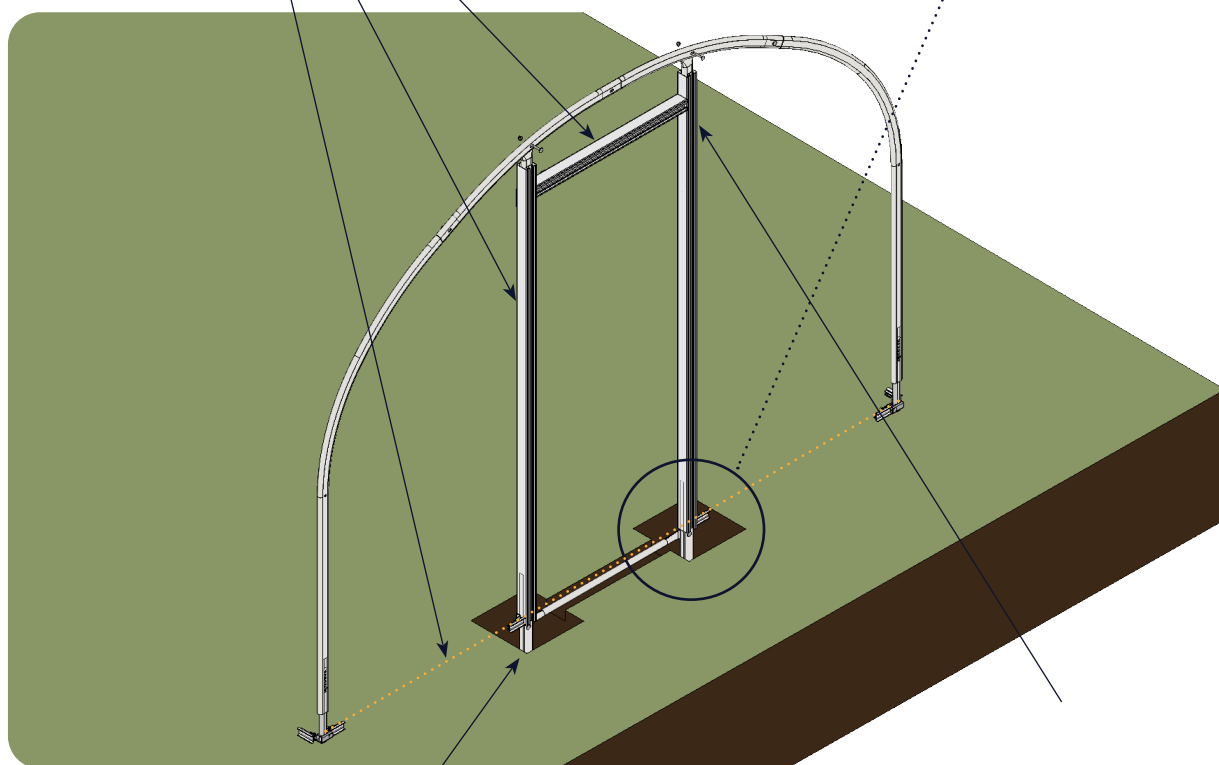




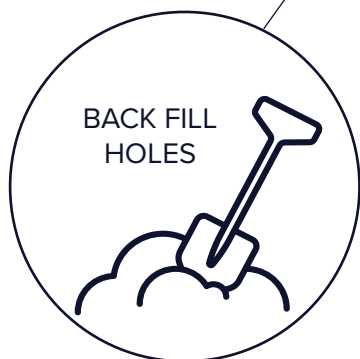
10.

CHECK LEVELS &  
ALIGNMENT

11.

GROUND  
LEVEL

12.

BACK FILL  
HOLES

REPEAT FOR EACH DOOR

TOOLS NEEDED: 13MM SPANNER/SOCKET, ALLEN KEY  
PACKS NEEDED: EZB202

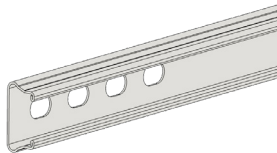
PER END



4 x  
FLANGED  
NUTS

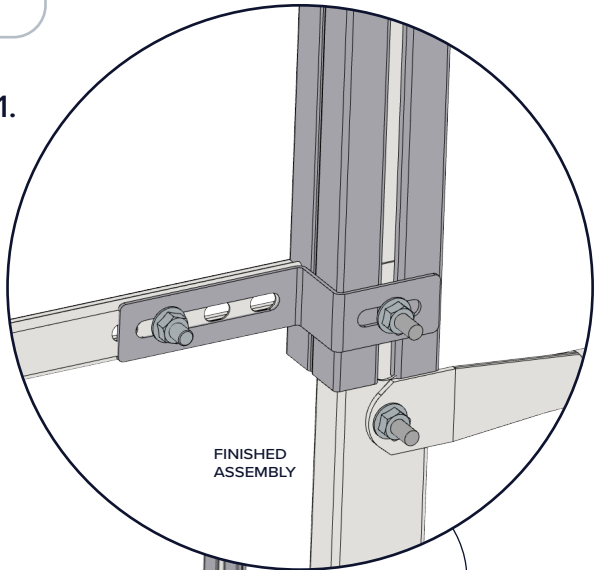


4 x  
BUTTON HEAD  
20MM

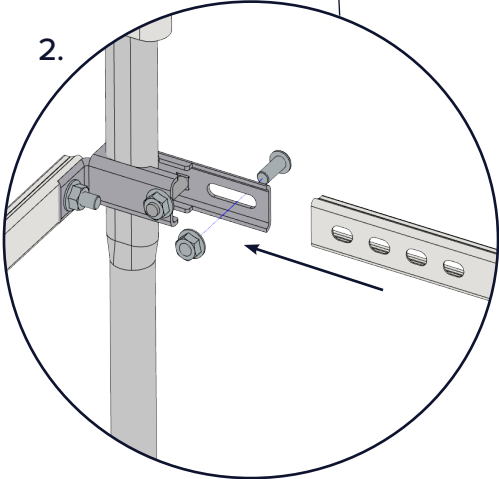


2 x  
BASE RAILS

1.



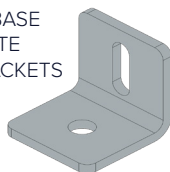
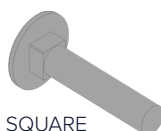
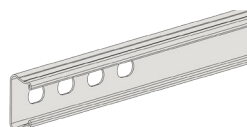
2.



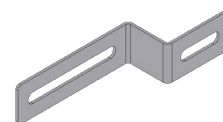
GO TO PAGE 22

TOOLS NEEDED: 10MM MASONRY DRILL BIT, HAMMER DRILL, TEK SCREW BIT, DRILL, STRING LINE, 13MM SPANNER/SOCKET, ALLEN KEY, SPIRIT LEVEL  
PACKS NEEDED: EZB220

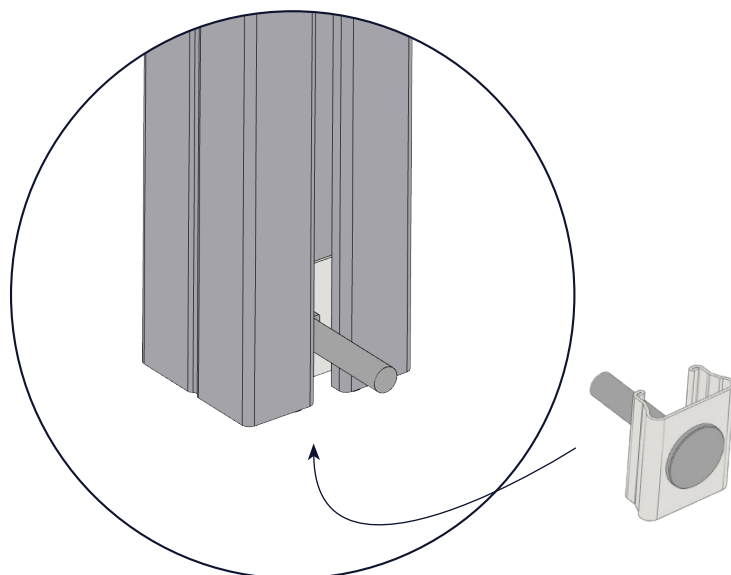
## PER DOOR

2x SLEEVE  
ANCHOR2x SINGLE  
COTTER2x BASE  
PLATE  
BRACKETS8x BUTTON  
HEADS 20MM4x CUP SQUARE  
BOLTS 40MM2x  
BASE RAILS6x  
FLANGED  
NUTS (6xDD)

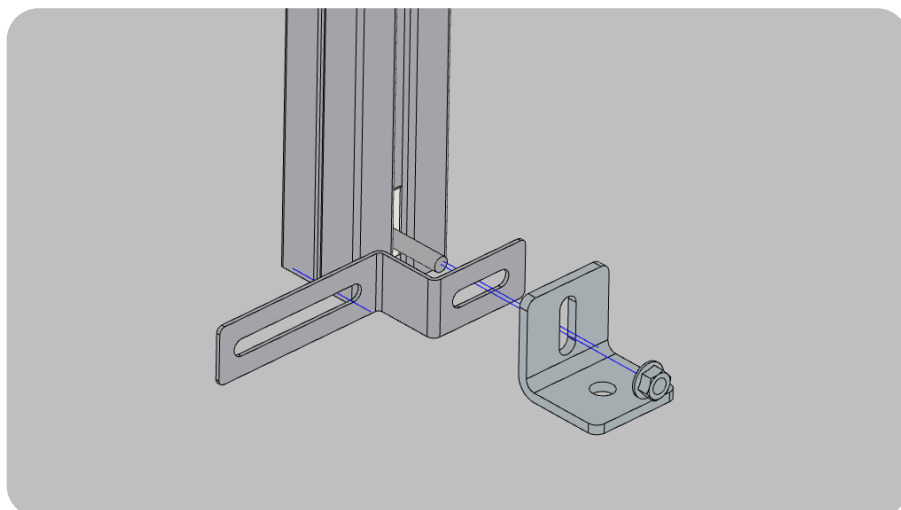
2 x Z BRACKET



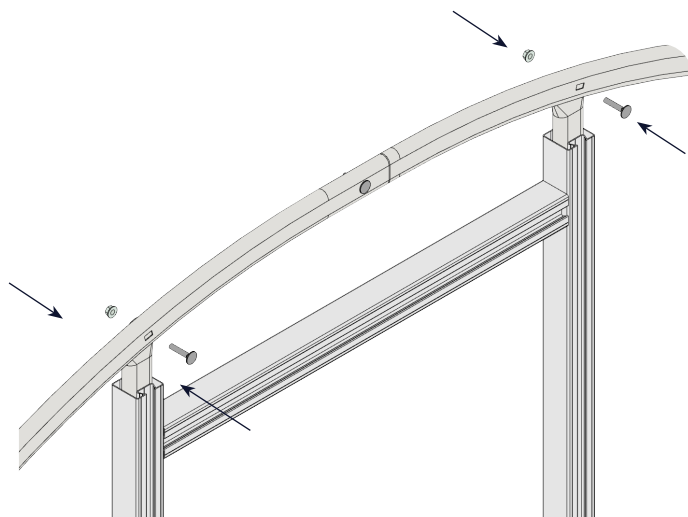
1.



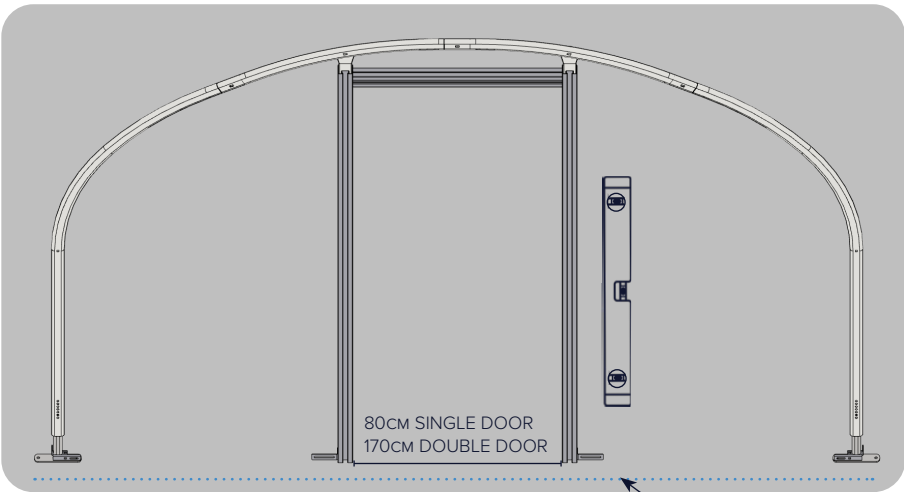
2.



3.



4.

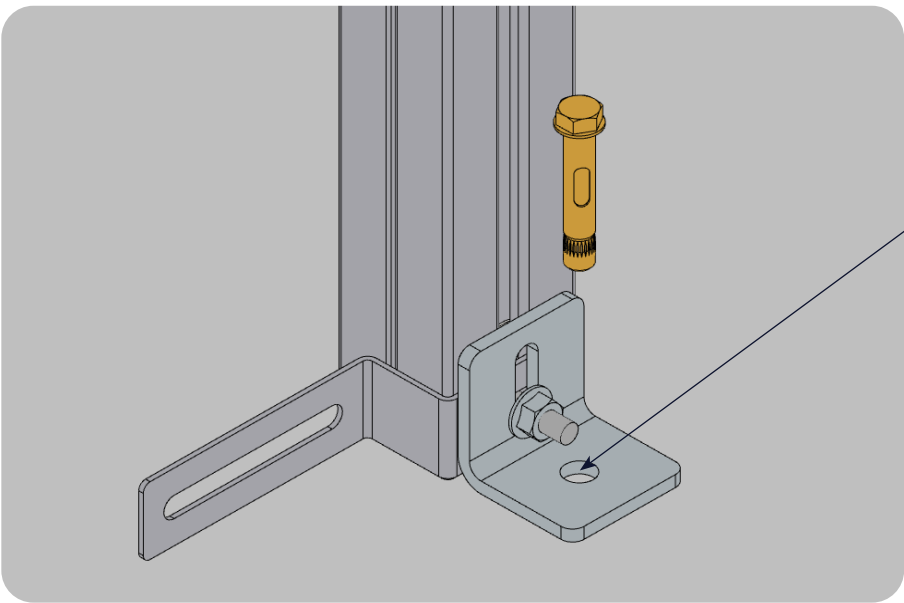


STRING LINE

CHECK DOOR IS IN  
LINE WITH HOOPS

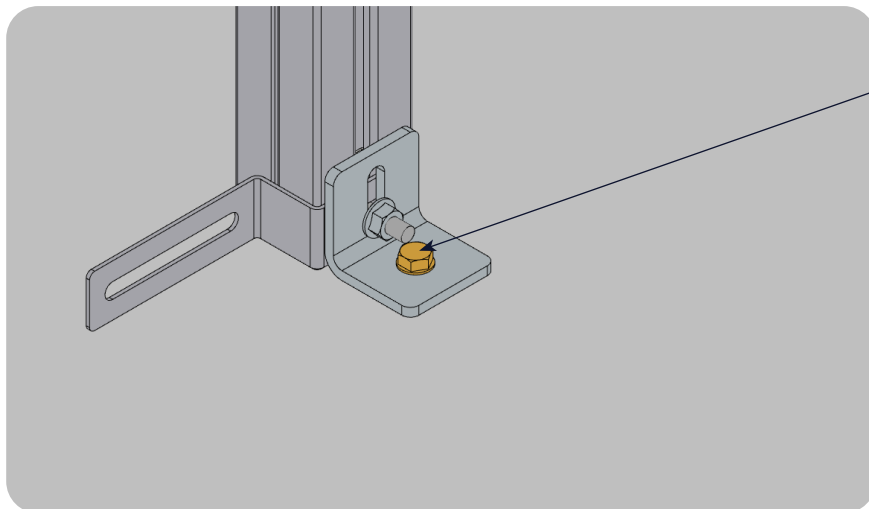


5.



55MM

10MM

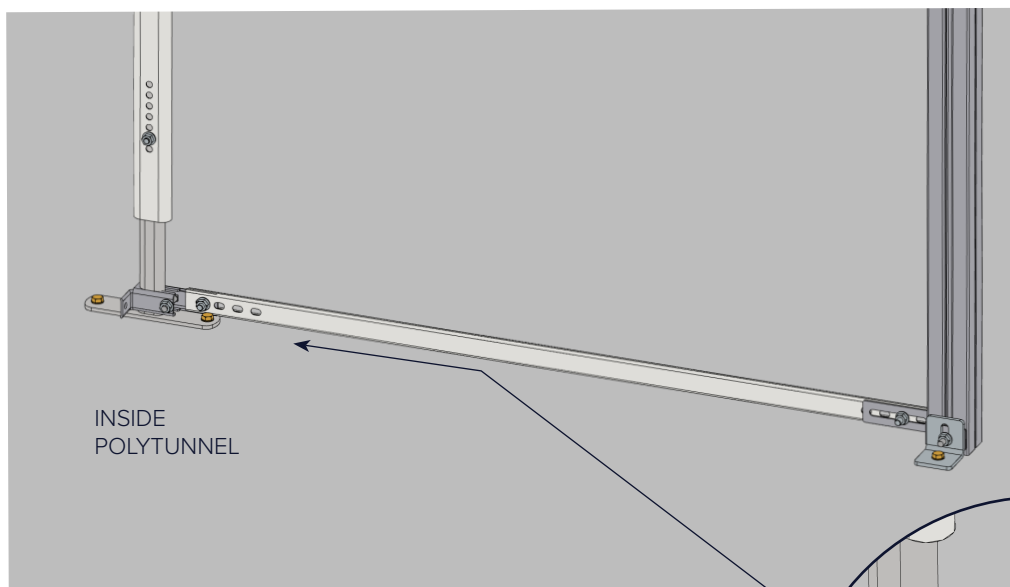


6.

HAMMER IN SLEEVE ANCHOR

TIGHTEN WITH SPANNER

7.

INSIDE  
POLYTUNNEL

REPEAT AT EACH DOOR POST

TOOLS NEEDED: 1 x 13MM SPANNER/SOCKET, 4MM ALLEN KEY, LADDERS  
PACKS NEEDED: EZB220

NOTE: 2.5M AND 3M TUNNELS  
ARE NOT SUPPLIED WITH V  
HANGERS



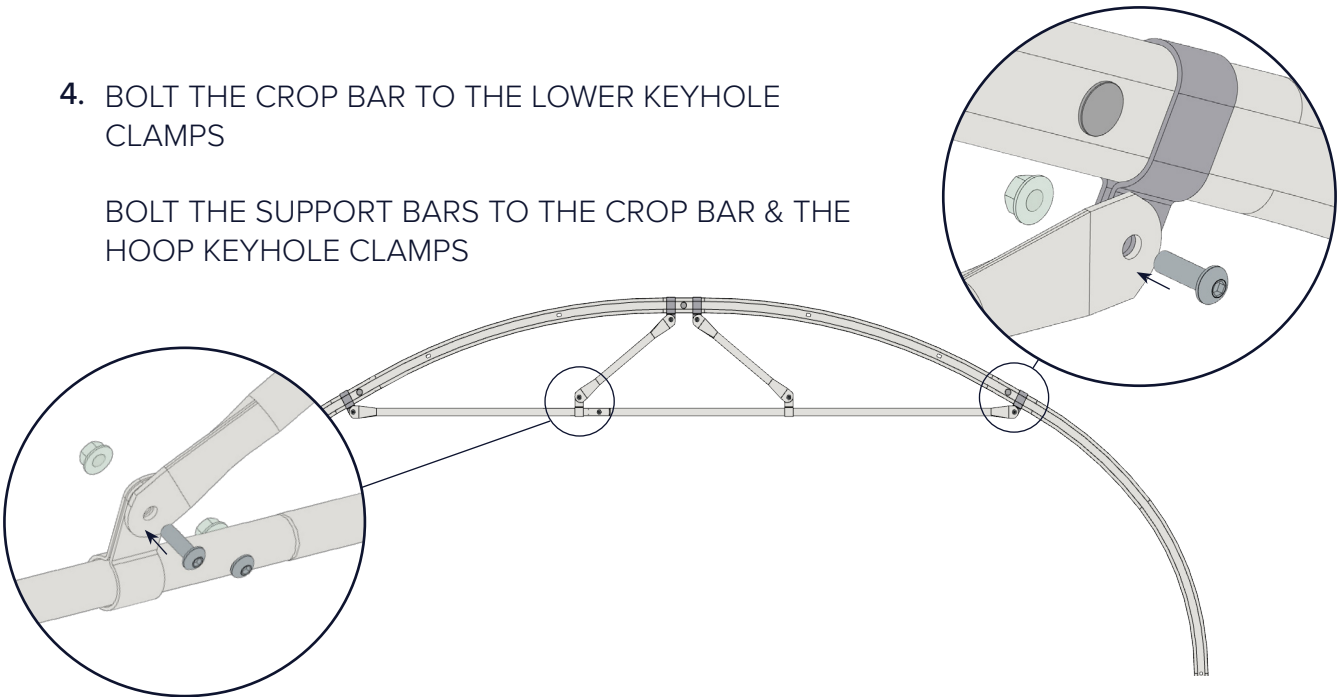
2. BOLT TOGETHER CROP  
BARS, IF SUPPLIED IN  
TWO PEICES

3. OPEN UP THE KEYHOLE  
CLAMPS & PUSH OVER  
THE CROP BAR



4. BOLT THE CROP BAR TO THE LOWER KEYHOLE  
CLAMPS

BOLT THE SUPPORT BARS TO THE CROP BAR & THE  
HOOP KEYHOLE CLAMPS

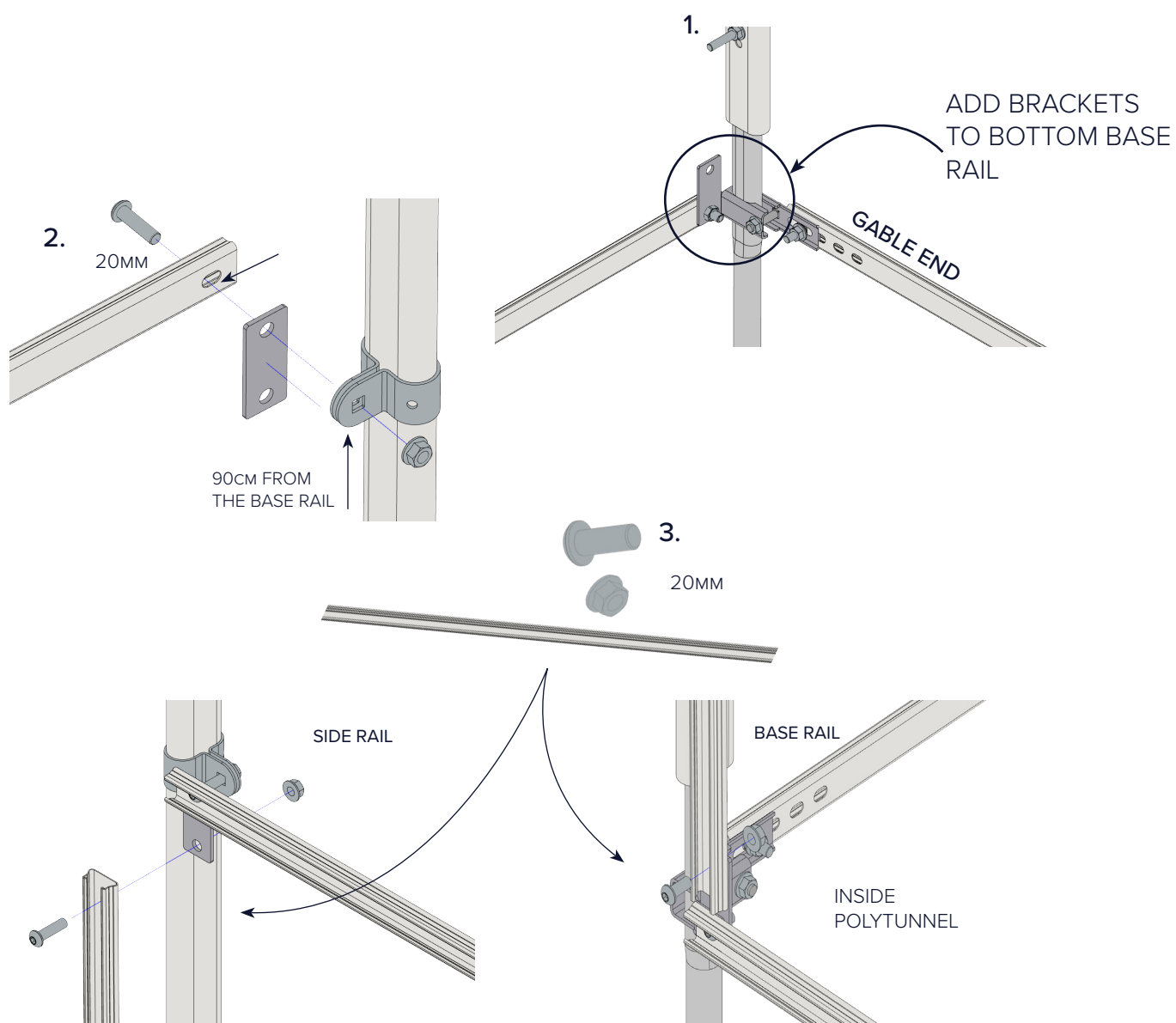




TOOLS NEEDED: 1 x 13MM SPANNER/SOCKET, 4MM ALLEN KEY

PACKS NEEDED: EZB204


## END HOOPS




REPEAT FOR EACH VENTED CORNER

PACKS NEEDED: EZB205, EZB204


INNER HOOPS



2 x  
FLANGED  
NUTS



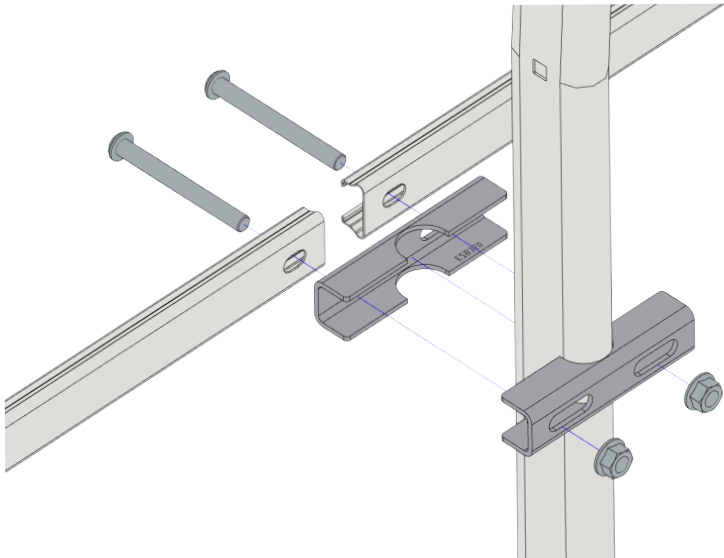
2 x  
BUTTON  
HEAD 75MM



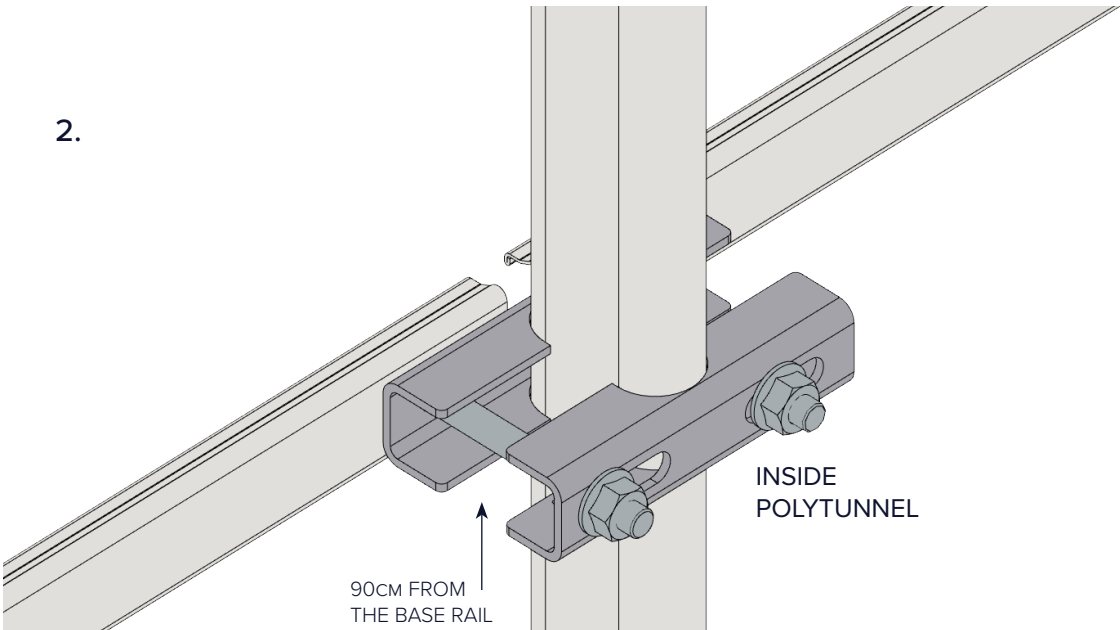
1 x  
SIDE RAIL  
1.48M

(PER HOOP, PER SIDE)

1.



2.



REPEAT FOR ALL INTERMEDIATE HOOPS

TOOLS NEEDED: WIRE CUTTERS, SCISSORS



1 x  
VENTILATION NETTING

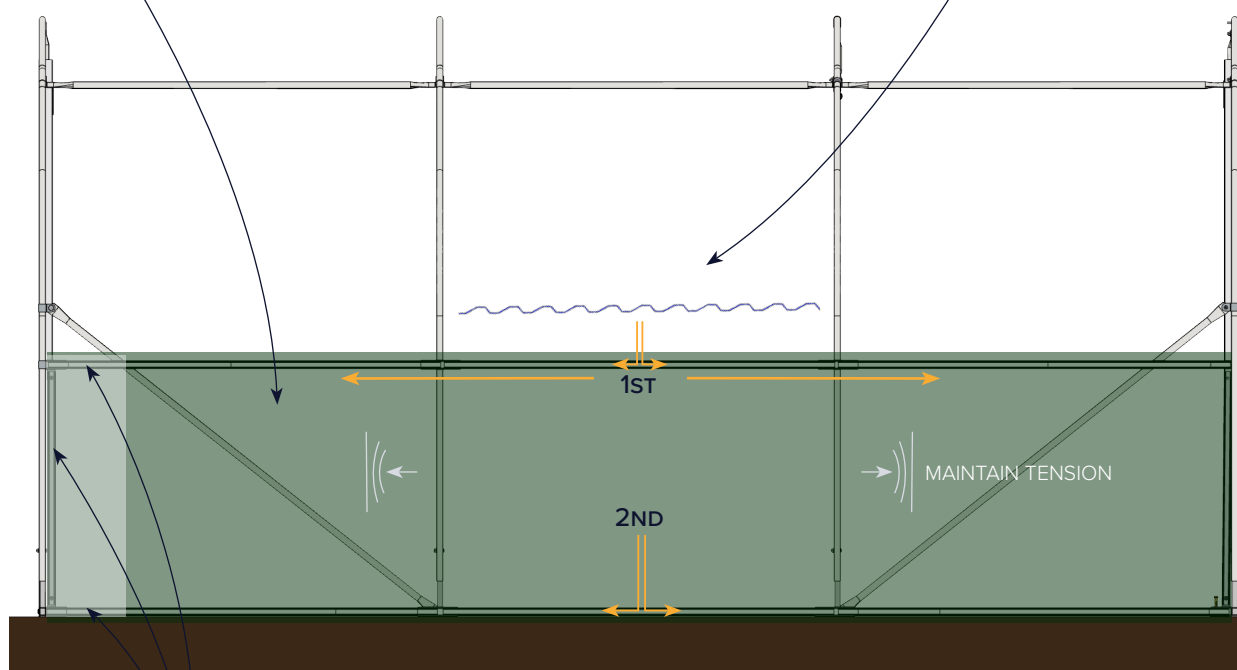


2 x POLYTHENE  
DRAUGHT PANELS

WIGGLE WIRE

1.  
PLACE NETTING

2.  
FIX NET IN USING  
WIGGLE WIRE



3.  
USE WIGGLE WIRE  
TO FIX DRAUGHT  
EXCLUSION PANELS  
  
REPEAT AT EACH END

4.  
COVER THE REST OF  
YOUR POLYTUNNEL AT  
THIS POINT.

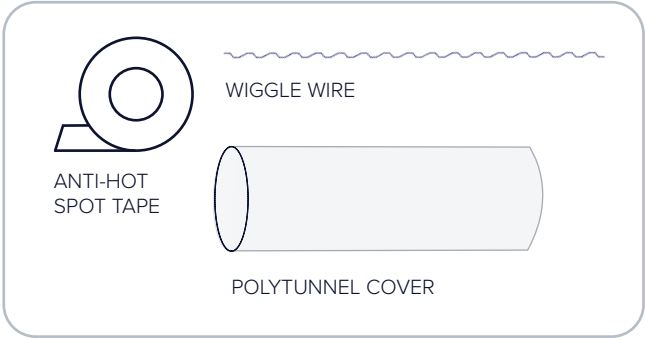
INSTALLATION OF SIDE  
VENTILATION RESUMES  
ON PAGE 30.

**NOTE**

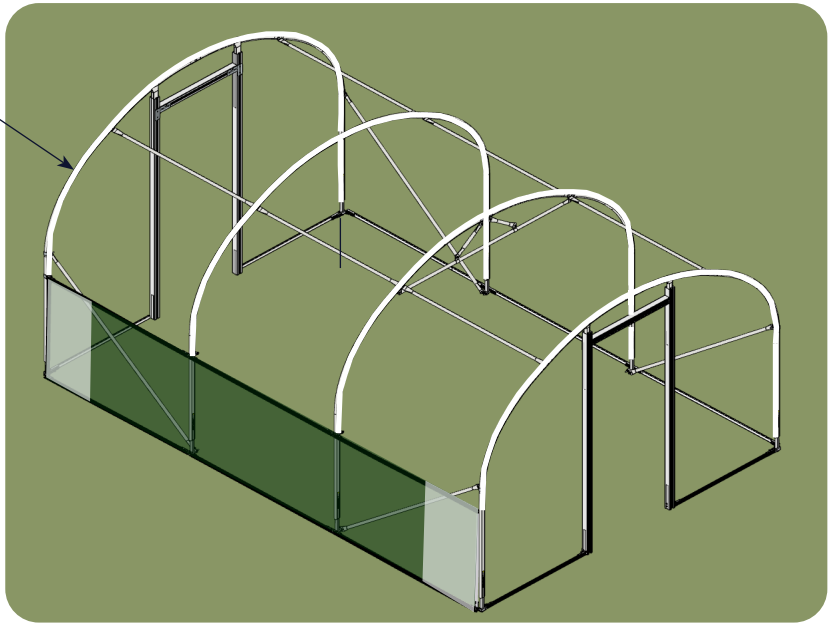
WIGGLE WIRE CAN BE  
REMOVED &  
RE-ATTACHED IF YOU  
NEED TO REDO ANY  
SECTIONS

26 COVERING (SKIP THIS STEP IF TRENCHING YOUR COVER)

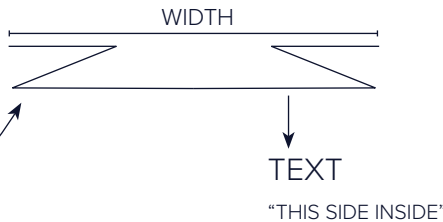
TOOLS NEEDED: STANLEY KNIFE OR SCISSORS (PREFERRED), WIRE CUTTERS, LADDER,  
13MM SPANNER/SOCKET, 4MM ALLEN KEY  
PACKS NEEDED: EZB204, EZB205



1. ANTI-HOT  
SPOT TAPE
- COVER HOOPS  
AS WELL AS  
ANY SHARP  
EDGES



2. UNROLL OR  
UNFOLD YOUR  
POLYTHENE,  
CHECK IT'S THE  
RIGHT WAY



YOU MUST BE ABLE  
TO READ THIS  
FROM INSIDE THE  
POLYTUNNEL

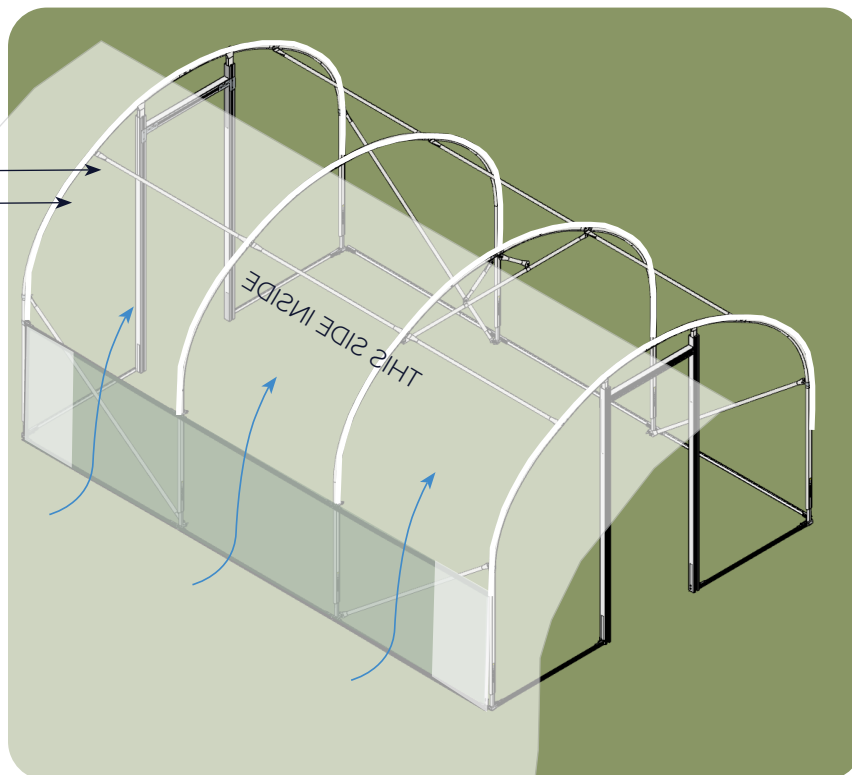
POLYTHENE IS  
FOLDED LIKE THIS  
ACROSS THE  
WIDTH



## NOTE

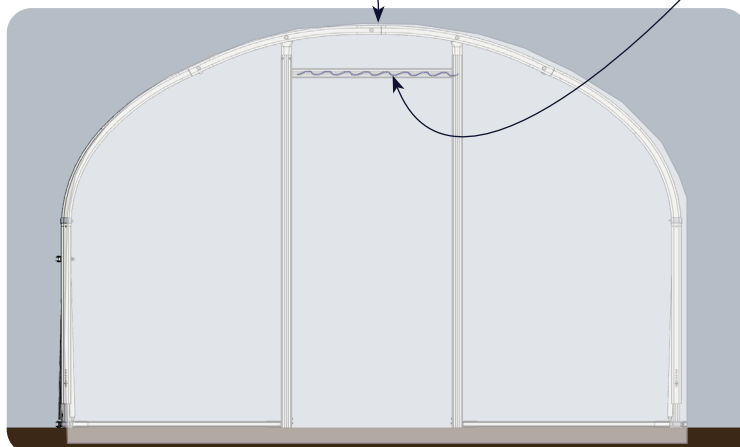
DO NOT ATTEMPT IF  
WIND SPEED  
EXCEEDS 15MPH!

WIND DIRECTION  
SHOULD PUSH THE  
COVER TOWARDS THE  
POLYTUNNEL



3. PULL  
POLYTHENE  
OVER  
POLYTUNNEL

4. FIND A SEAM IN THE  
POLYTHENE, ENSURE THIS  
RUNS IN LINE WITH THE  
LENGTH OF THE POLYTUNNEL



5. WIGGLE WIRE THE  
POLYTHENE INTO THE DOOR  
LINTELS, PULL THE  
POLYTHENE TIGHT AT  
SECOND END

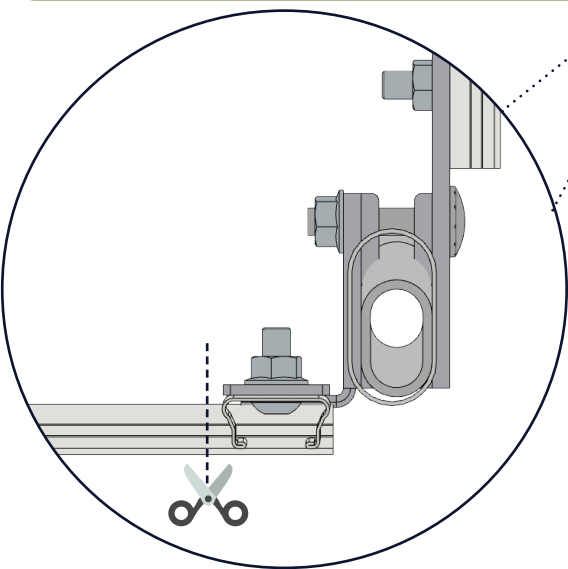
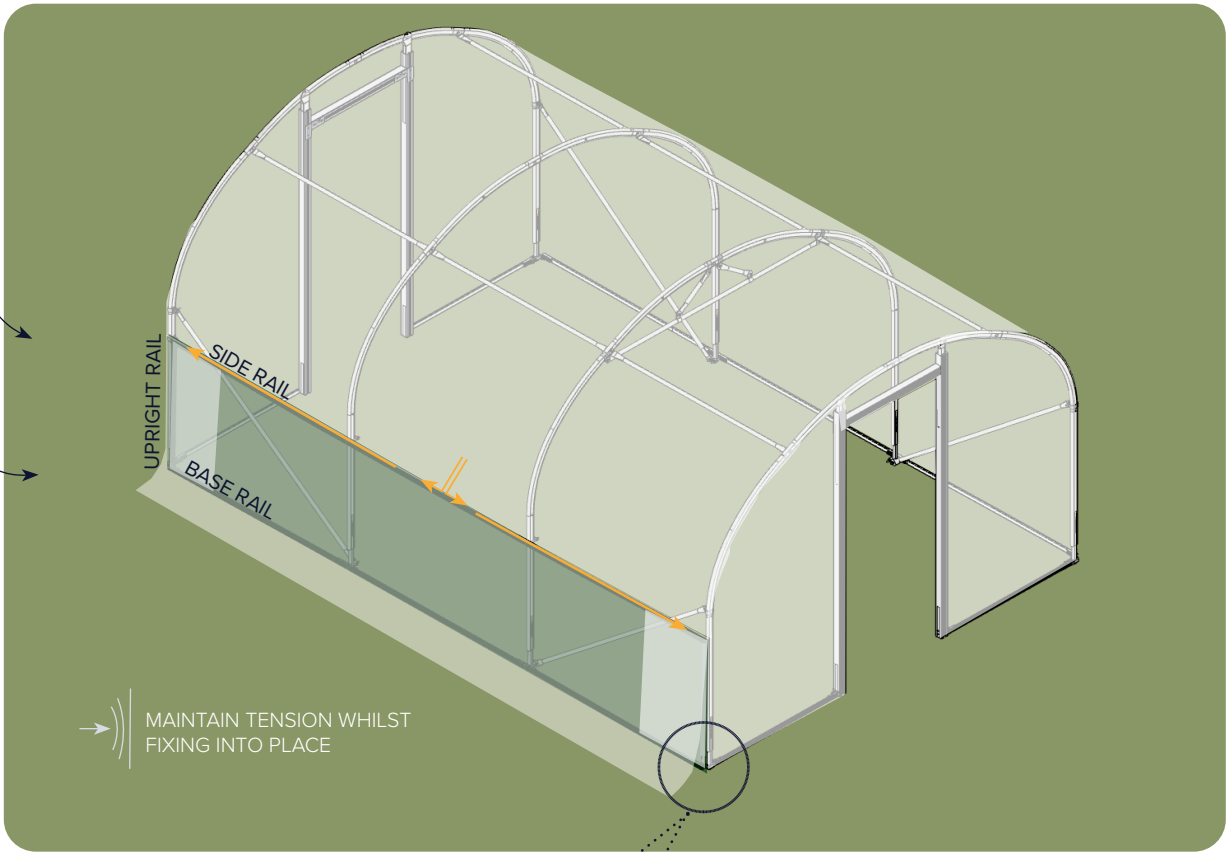
## NOTE

PULL THE COVER AS  
TIGHT AS POSSIBLE  
AS YOU FIX WITH  
WIGGLE WIRE

6. USE WIGGLE WIRE TO FIX THE POLYTHENE INTO BASE RAIL.

IF SIDE VENTILATION INSTALLED, FIX INTO SIDE RAIL AND UPRIGHT VENTILATION RAIL (NOT BASE RAIL)

NOTE  
IF YOU HAVE SIDE VENTILATION, DO NOT TRIM OFF THE EXCESS SIDE COVER & ENSURE WHEN COVERING THAT THERE IS ENOUGH POLYTHENE TO FORM THE SIDE CURTAIN.

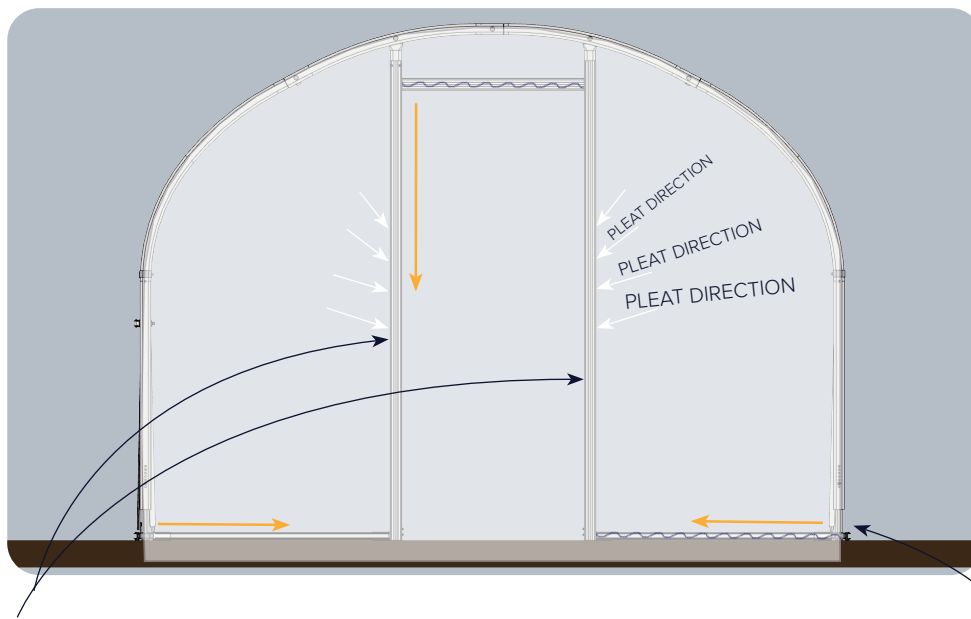


7. CUT POLYTHENE AT CORNERS

IF SIDE VENTILATION FITTED:

YOU WILL NEED TO CUT FROM THE CORNER UP TO THE SIDE RAIL ON THE SIDE OF THE POLYTUNNEL



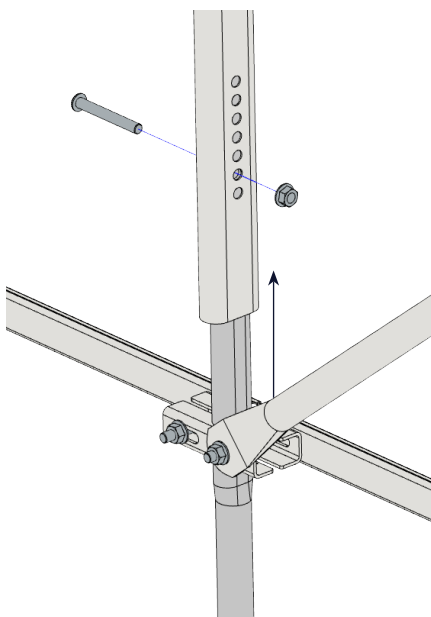


8. USE WIGGLE WIRE TO FIX THE POLYTHENE INTO THE DOOR FRAME.

PULL THE POLYTHENE ACROSS & DOWN AS YOU FIX

ADD AN ADDITIONAL LAYER OF WIGGLE WIRE TO THE DOOR FRAMES FOR EXTRA SECURITY

9. USE WIGGLE WIRE TO FIX THE POLYTHENE INTO THE GABLE END BASE RAILS



10. LIFT THE INNER HOOPS ONE AT A TIME TO TENSION THE COVER

IF SIDE VENTILATION INSTALLED:

LOOSEN THE SIDE RAIL BRACKET ONE AT A TIME

LIFT THE HOOP TO TENSION

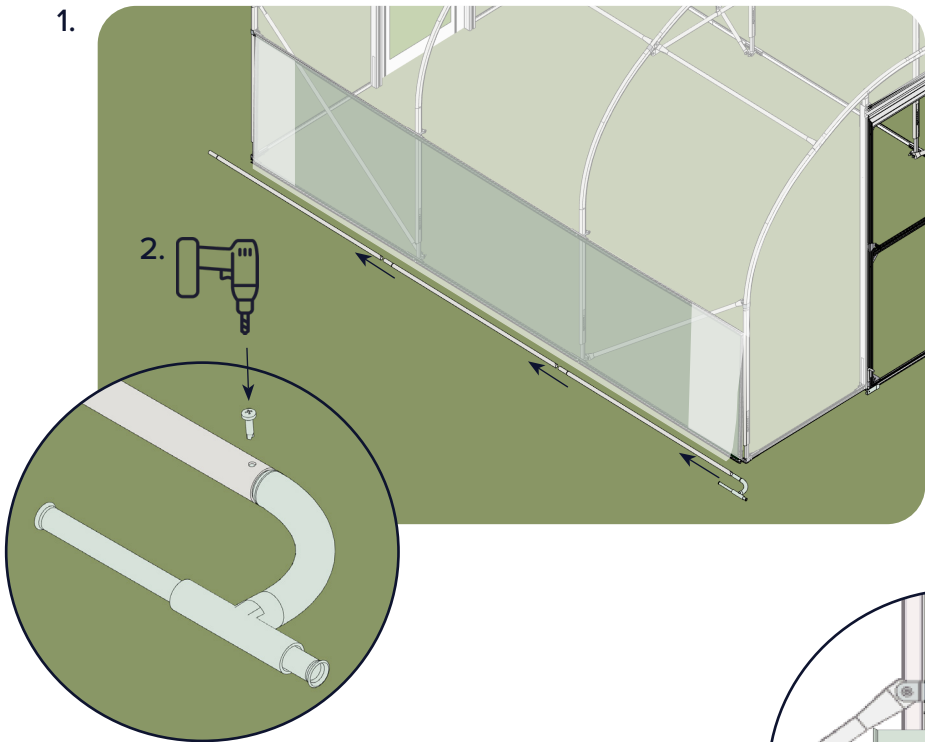
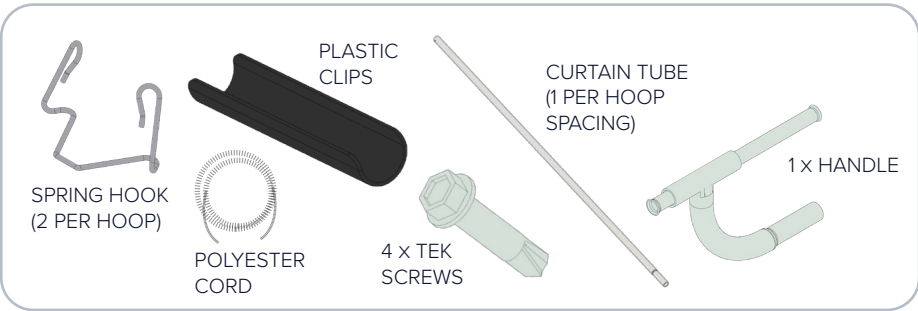
TIGHTEN SIDE RAIL BRACKET

REPEAT ON EACH HOOP

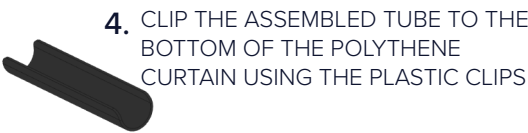
TRIM ANY EXCESS POLYTHENE & WIGGLE WIRE IF NO SIDE VENT FITTED

TOOLS NEEDED: DRILL WITH TEK SCREW BIT, SCISSORS

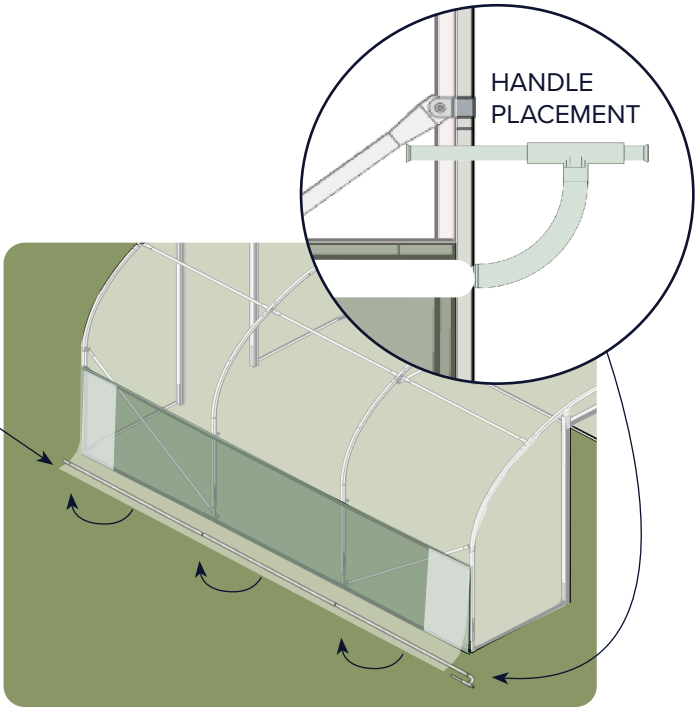
\*RESUME FROM THIS POINT ONCE YOU HAVE COVERED YOUR POLYTUNNEL\*

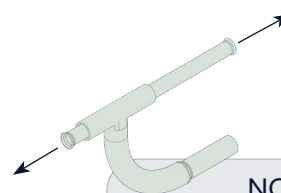
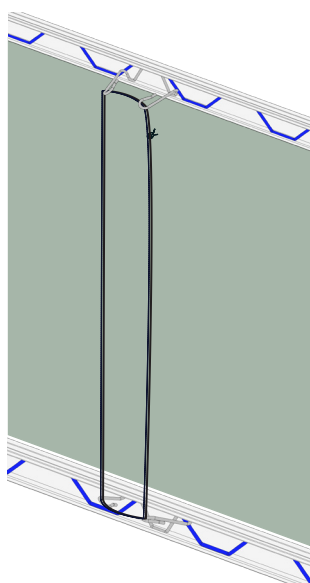
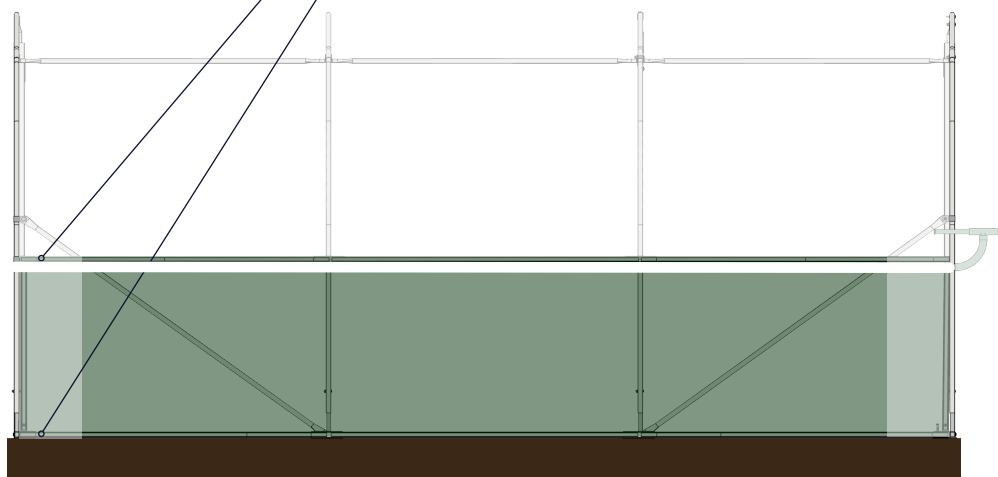
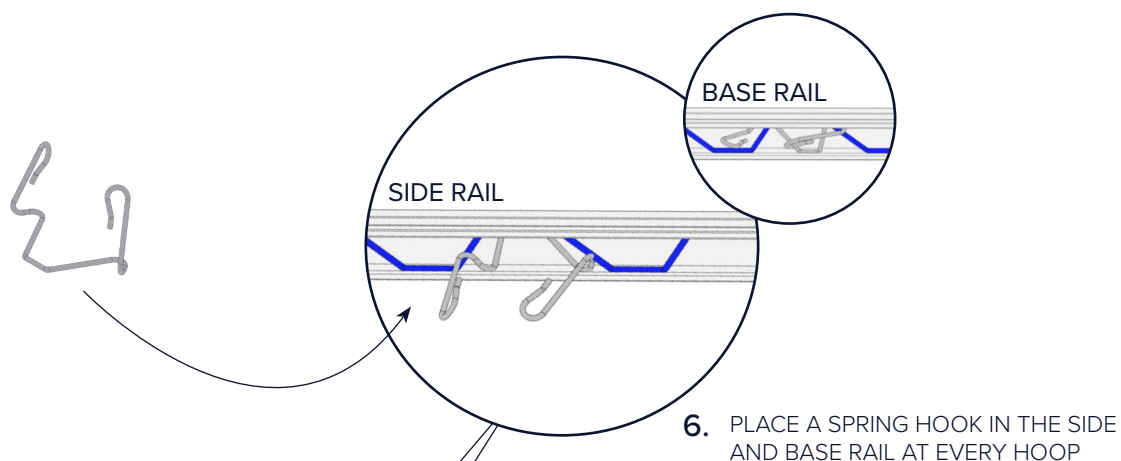


3. YOU NEED AT LEAST 100MM OF EXCESS POLYTHENE TO ATTACH THE CURTAIN TUBE, TRIM IF EXCESSIVELY LONG OR UNEVEN.



5. YOU SHOULD NOW BE ABLE TO WIND THE CURTAIN UP AND DOWN



**NOTE**

THE HANDLE HAS A TUBE THAT SLIDES IN AND OUT.

SLIDE THE TUBE OUT TOWARDS YOU TO OPEN OR CLOSE THE CURTAIN.

SLIDE THE TUBE AWAY FROM YOU TO LOCK THE CURTAIN IN PLACE.

TOOLS NEEDED: SPADE, FORK, STANLEY KNIFE OR SCISSORS, WIRE CUTTERS, TAPE MEASURE, 4MM ALLEN KEY, 13MM SPANNER/SOCKET



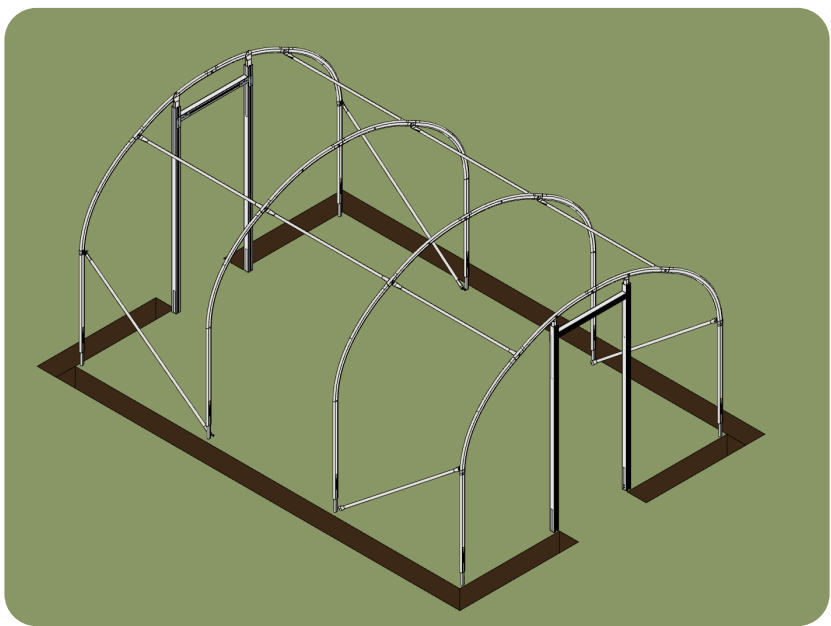
ANTI-HOT  
SPOT TAPE



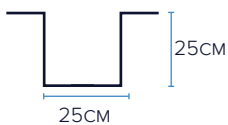
WIGGLE WIRE



POLYTUNNEL COVER

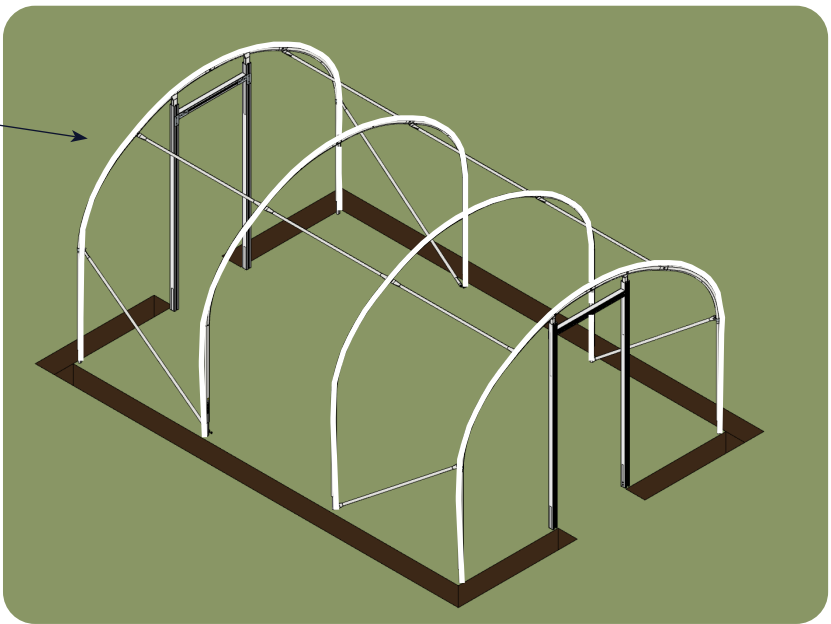


1. DIG A TRENCH



2.  
ANTI-HOT  
SPOT TAPE

PLACE ON  
HOOPS AS WELL  
AS ANY SHARP  
EDGES



3. UNROLL YOUR  
POLYTHENE,  
CHECK IT'S THE  
RIGHT WAY  
ROUND

POLYTHENE IS  
FOLDED LIKE  
THIS



TEXT

"THIS SIDE INSIDE"

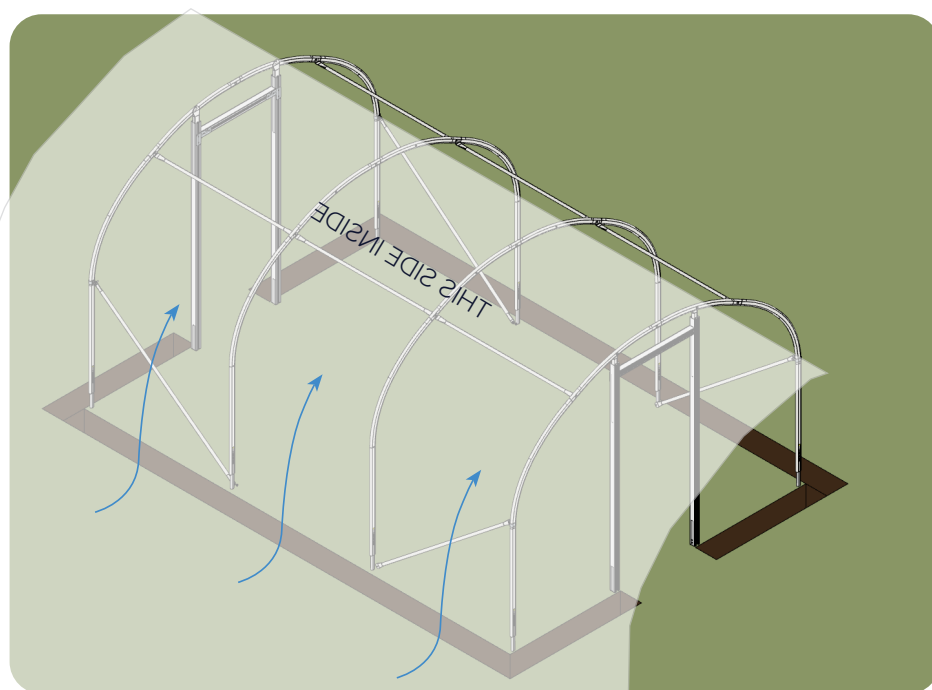
YOU MUST BE ABLE  
TO READ THIS  
FROM INSIDE THE  
POLYTUNNEL



NOTE

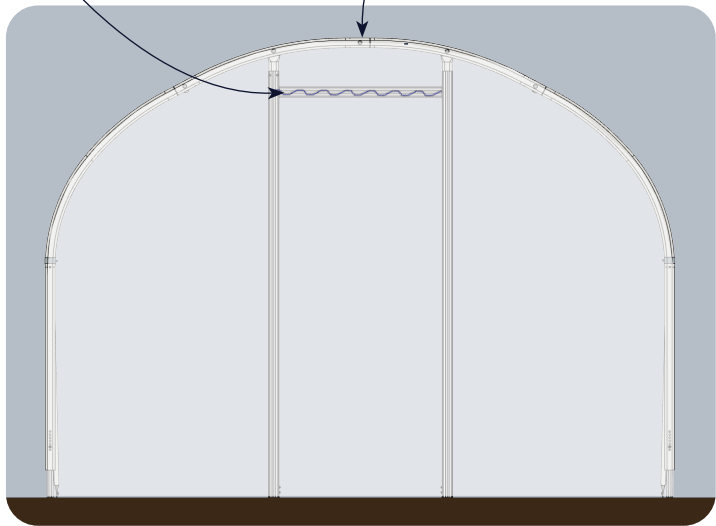
DO NOT ATTEMPT IF  
WIND SPEED  
EXCEEDS 15MPH!

WIND DIRECTION  
SHOULD STICK THE  
COVER TO THE  
POLYTUNNEL



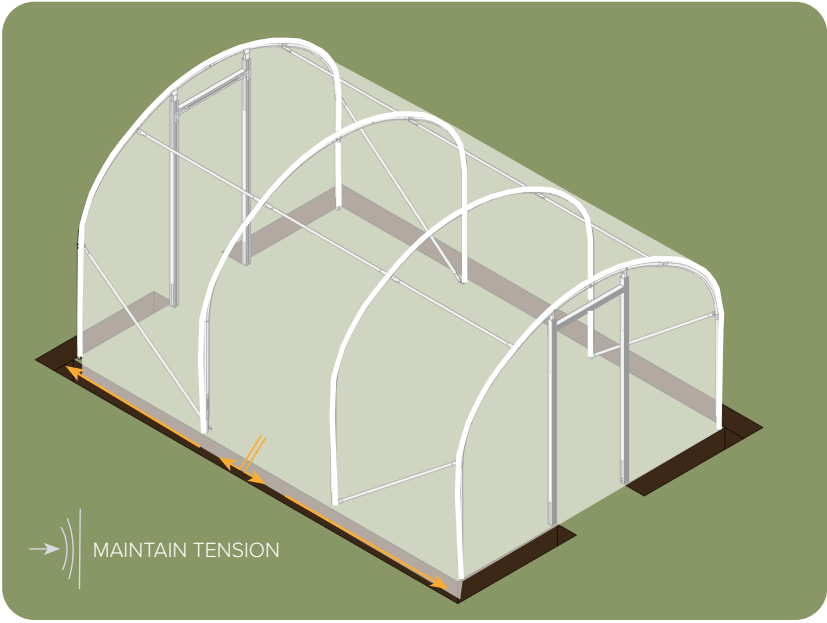
4. PULL  
POLYTHENE  
OVER  
POLYTUNNEL

6. WIGGLE WIRE THE POLYTHENE INTO THE DOOR LINTELS, PULL THE POLYTHENE TIGHT AT SECOND END



5. FIND SEAM IN POLYTHENE, ENSURE THIS RUNS IN LINE WITH THE LENGTH OF THE POLYTUNNEL

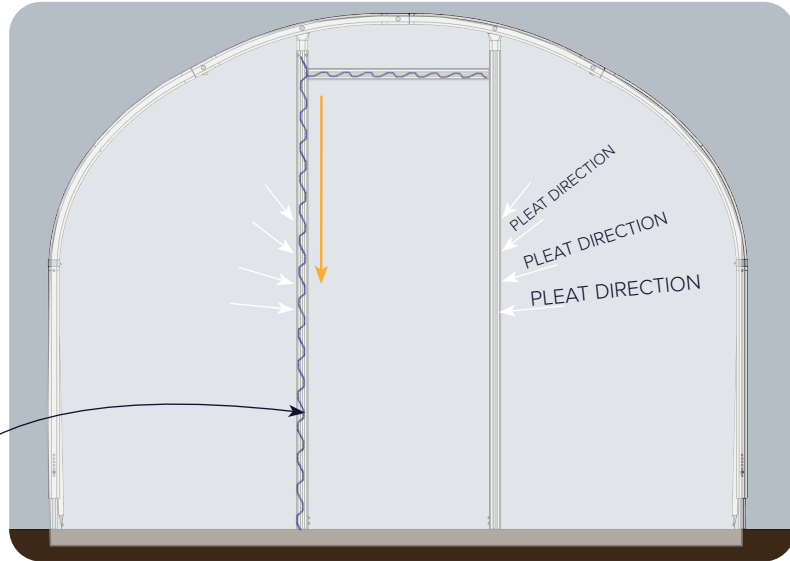
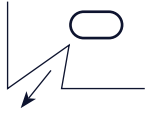
7. PIERCE TRENCHED POLYTHENE WITH A FORK FOR DRAINAGE



8. PULL POLYTHENE TIGHT AND BACKFILL THE TRENCH ALONG THE LENGTH OF THE TUNNEL

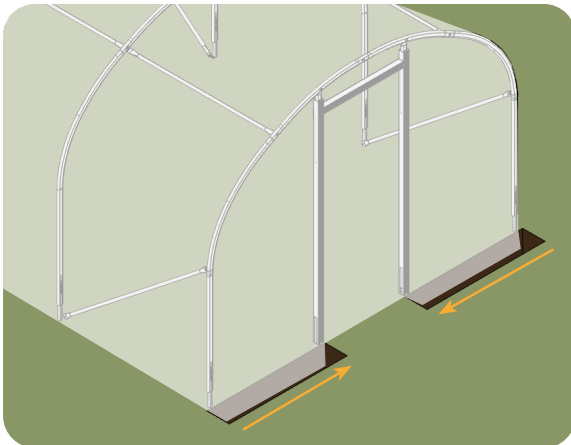


9. CUT POLYTHENE AT CORNERS



10. USE WIGGLE WIRE TO FIX THE POLYTHENE INTO THE DOOR FRAME.

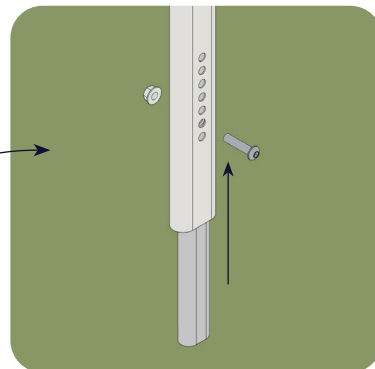
PULL THE POLYTHENE ACROSS & DOWN AS YOU FIX



11. PULL POLYTHENE TIGHT AND BACKFILL THE TRENCH ALONG THE GABLE ENDS OF THE TUNNEL

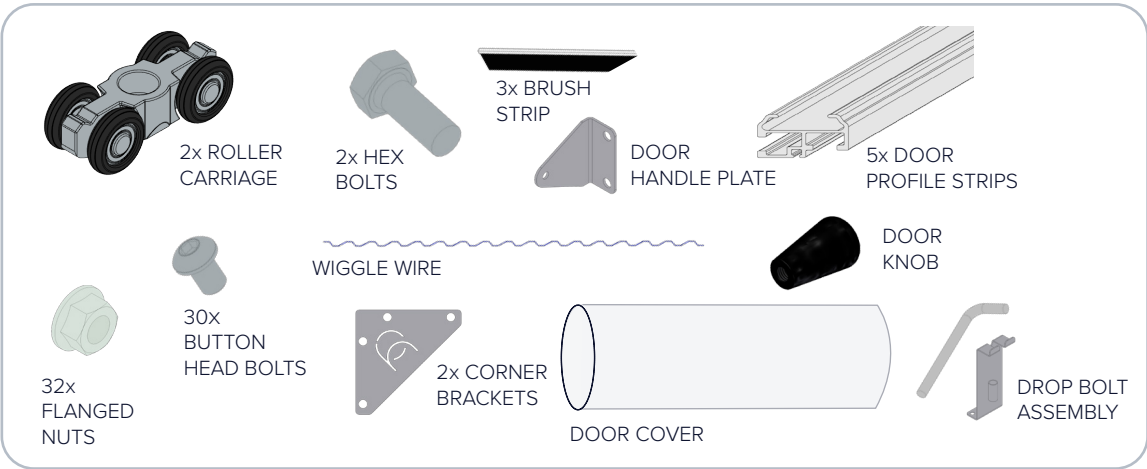
12. ADD AN ADDITIONAL LAYER OF WIGGLE WIRE TO THE DOOR FRAMES FOR EXTRA SECURITY

13. LIFT THE INTERNAL HOOPS ONE AT A TIME TO TENSION THE COVER

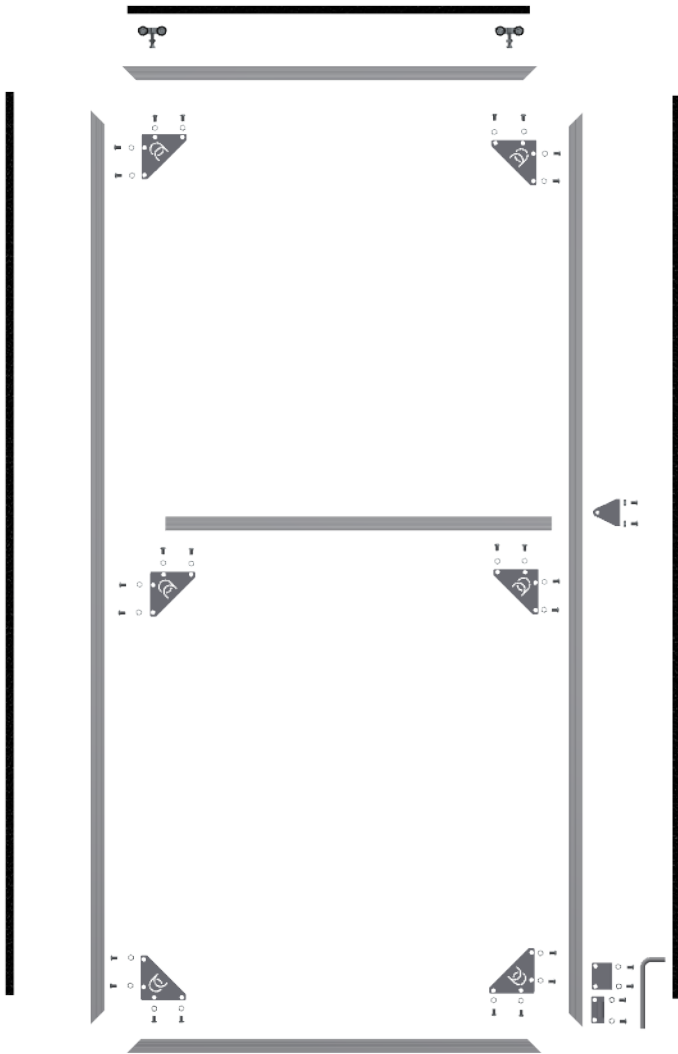


TRIM ANY EXCESS POLYTHENE & WIGGLE WIRE

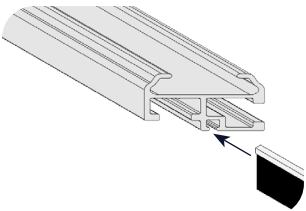
TOOLS NEEDED: 1 x 13MM SPANNER/SOCKET, 4MM ALLEN KEY, SPIRIT LEVEL



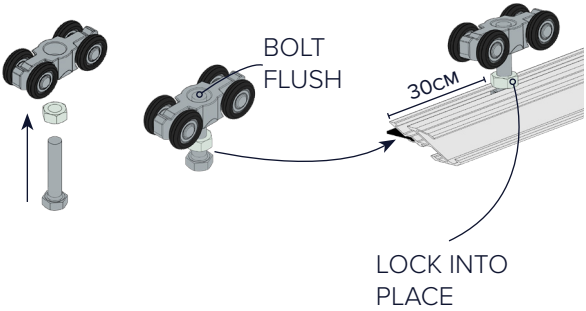
1. LAY OUT THE PARTS



2. INSERT BRUSH STRIP

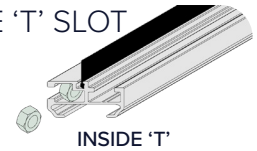


3. ROLLER CARRIAGES

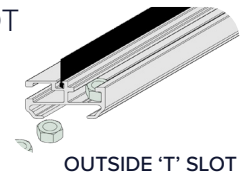


5. USE THE BOLTS TO HELP GUIDE THE NUTS INTO THE 'T' SLOT

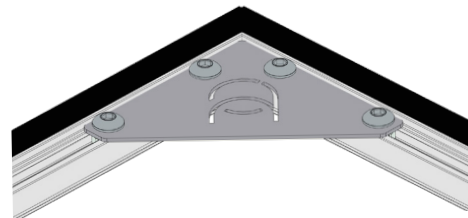
NUTS FOR THE HANDLE & DROP BOLT GO INTO THE OUTSIDE 'T' SLOT



NUTS FOR THE CORNER BRACKETS GO INTO THE INSIDE 'T' SLOT



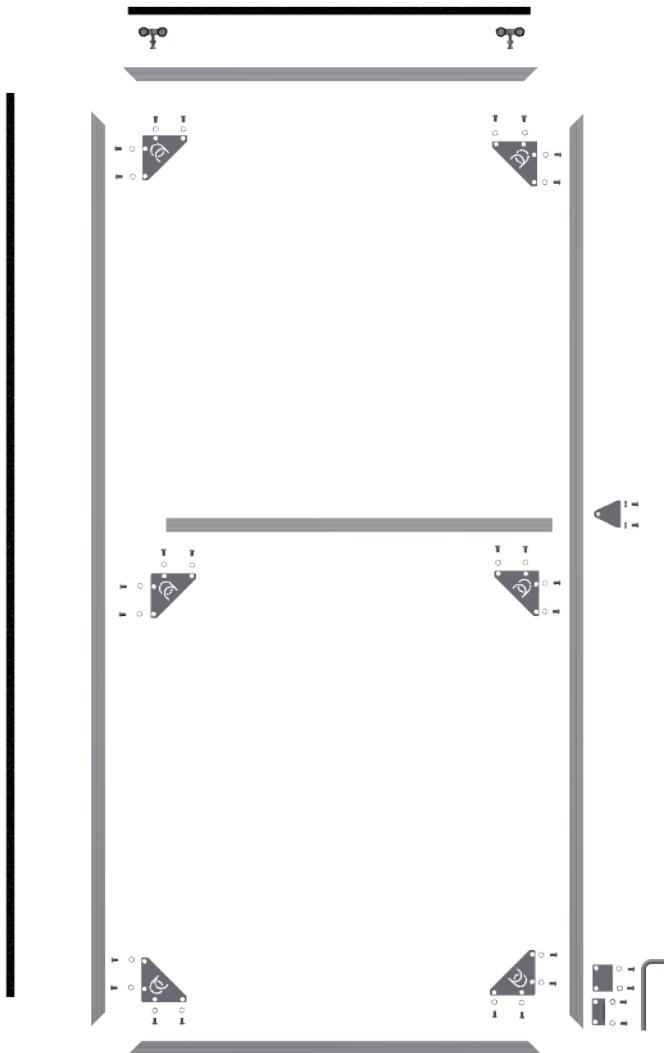
6. FIX THE MIDDLE BRACKETS AND MIDDLE ALLUMINUM SECTION TO THE OUTER SECTIONS USING THE NUTS YOU HAVE JUST PLACED



7. REPEAT TO ATTACH THE TOP AND BOTTOM SECTIONS OF DOOR PROFILE WITH THE REMAINING CORNER BRACKETS

8. CHECK EVERYTHING IS SQUARE

TIGHTEN

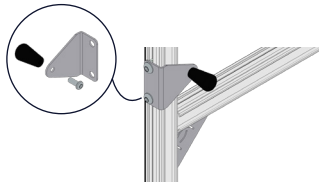


TOOLS NEEDED: 4MM ALLEN KEY, WIRE CUTTERS

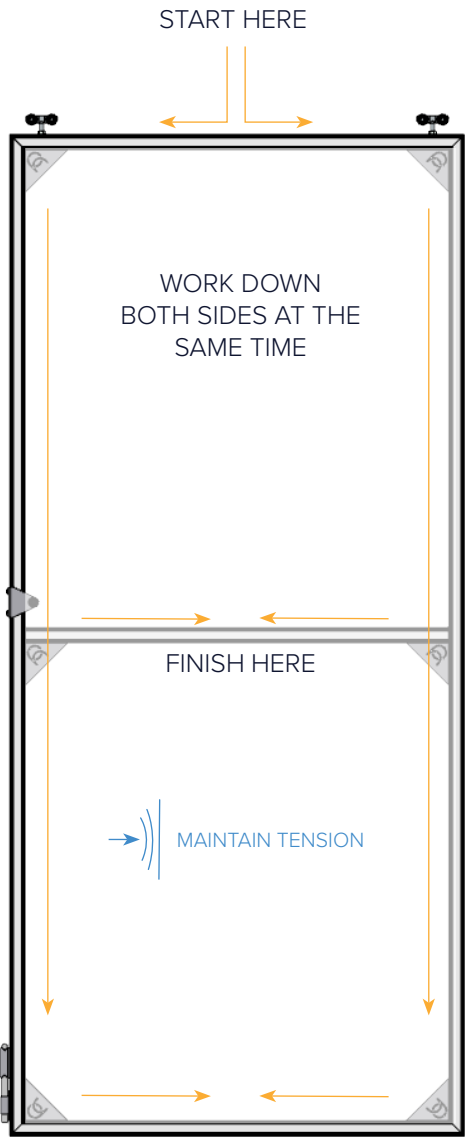
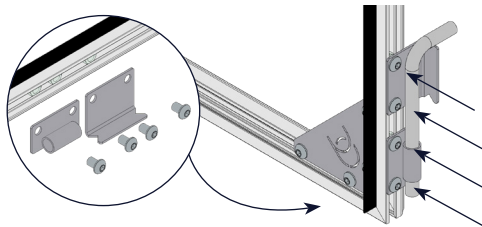
NOTE  
YOU ALSO HAVE A NET  
PANNEL, YOU CAN USE  
THIS AS AN ALTERNATIVE  
TO POLYTHENE FOR  
INCREASED VENTILATION

1. USE WIGGLE WIRE TO FIX THE POLYTHENE INTO THE DOOR FRAME.

2. ATTACH THE DOOR HANDLE

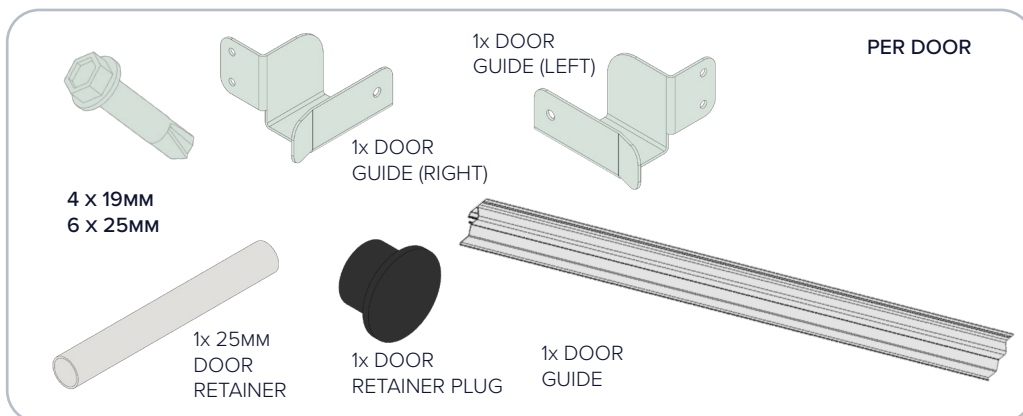


3. ATTACH THE DROP BOLTS

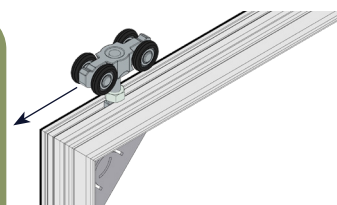
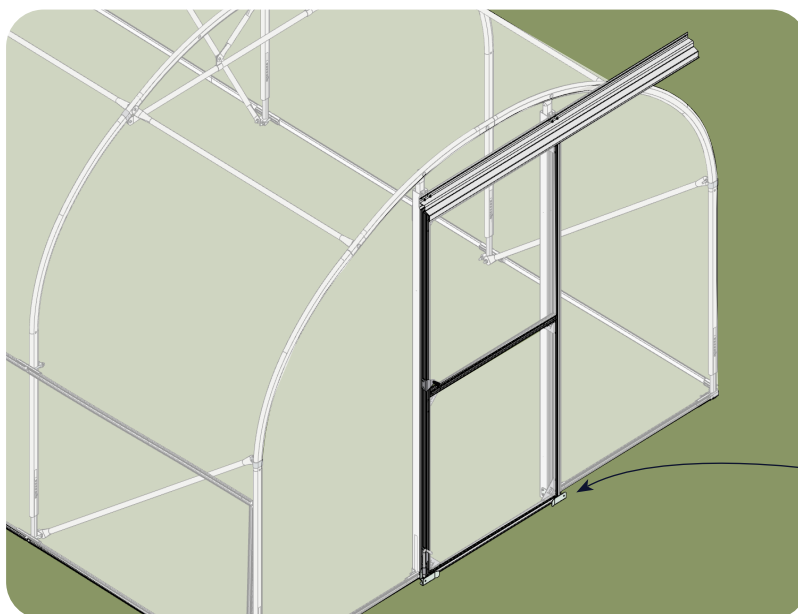
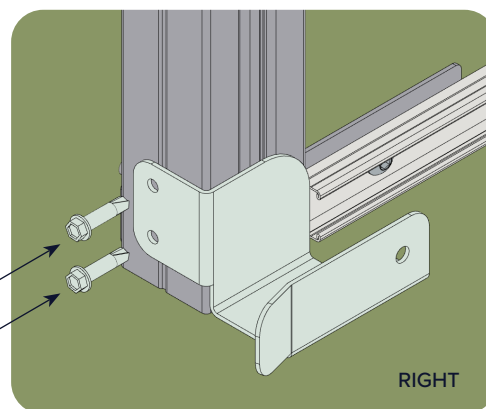
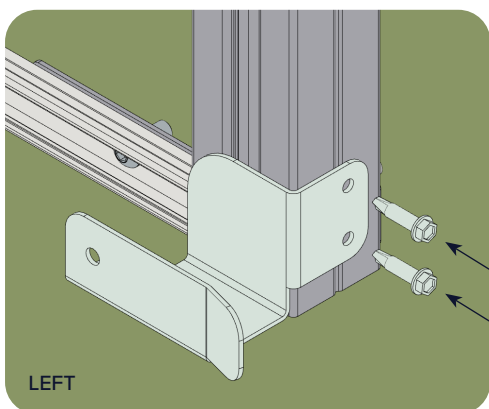


TRIM ANY EXCESS POLYTHENE & WIGGLE WIRE

TOOLS NEEDED: DRILL WITH TEK SCREW BIT, SPIRIT LEVEL, HAMMER



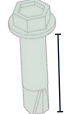
1.

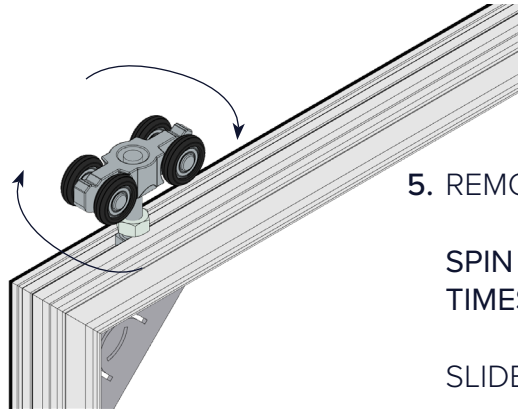
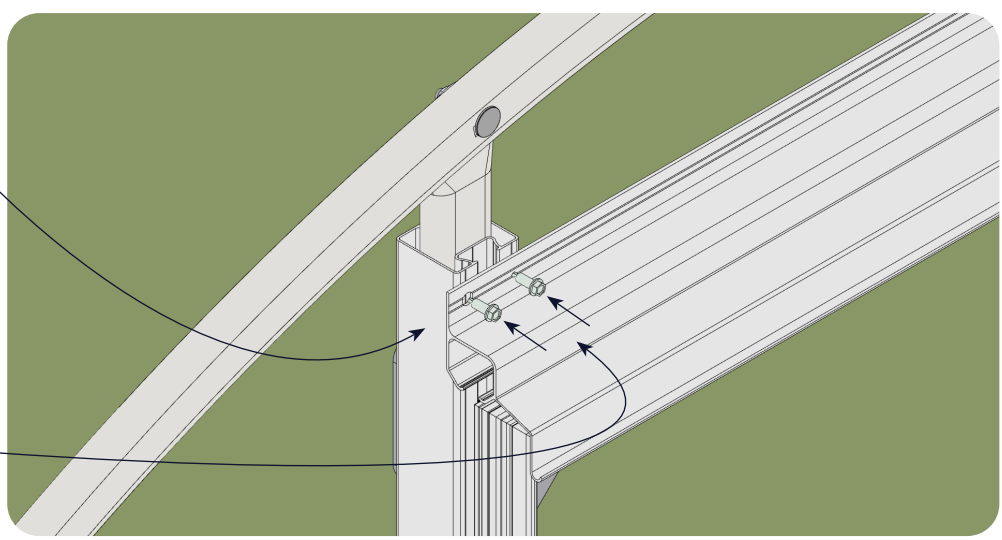


SLIDE DOOR TRACK ONTO DOOR CARRIAGES OF FINISHED DOOR ASSEMBLY.

PLACE ONTO DOOR GUIDES

3. 

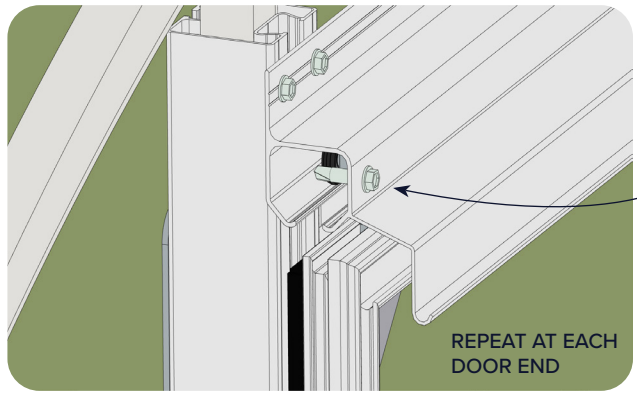
4.  19MM



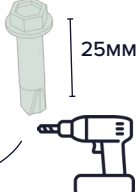
5. REMOVE DOOR FROM TRACK

SPIN ROLLER CARRIAGE CLOCKWISE 4 TIMES

SLIDE DOOR BACK INTO DOOR TRACK

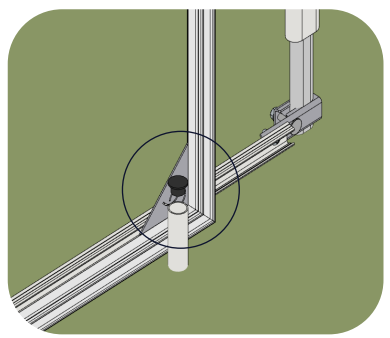


REPEAT AT EACH DOOR END

6.  25MM



7. HAMMER IN DOOR RETAINER & PLASTIC PLUG

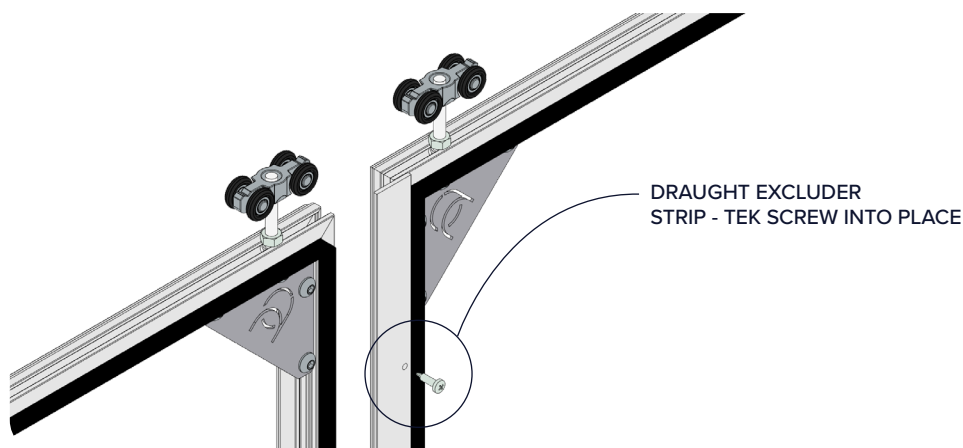




## DOUBLE DOOR BUILD

TO BUILD DOUBLE DOORS, FOLLOW THE INSTRUCTIONS FOR OUR SINGLE DOOR, JUST REPEAT THE PROCESS FOR YOUR SECOND DOOR.

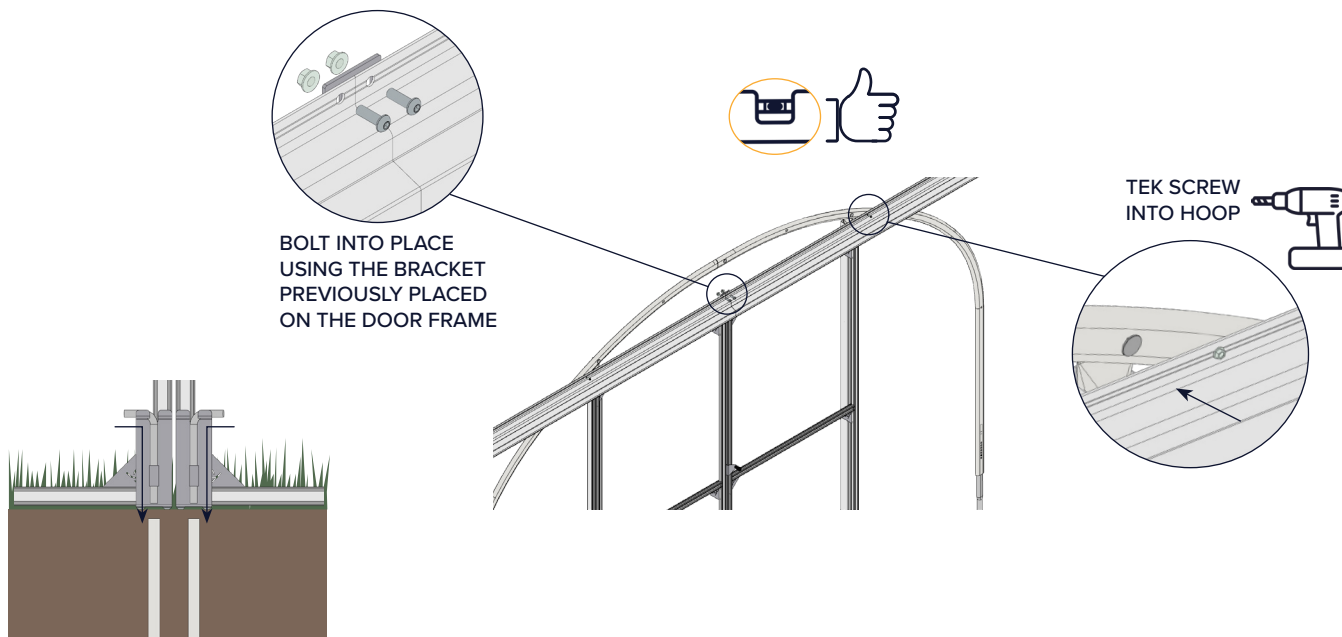
DOUBLE DOORS ARE FITTED WITH A DRAFT EXCLUDER, FIX THIS STRIP BEFORE COVERING.



## DOUBLE DOOR FITTING

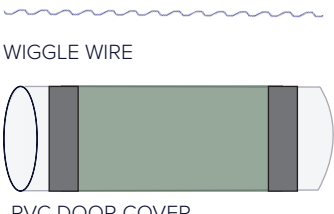
THE FITTING PROCESS IS ALSO VERY SIMILAR, FOLLOW THE INSTRUCTIONS FOR THE SINGLE SLIDING DOOR, BUT USE THE DOUBLE DOOR FIXING POINTS HIGHLIGHTED BELOW.

REPEAT THE PROCESS FOR YOUR SECOND DOOR.



DON'T FORGET TO HAMMER IN YOUR DROP BOLT LOCATING TUBES ONCE YOUR DOORS ARE FITTED.

TOOLS NEEDED: WIRE CUTTERS, SHARP KNIFE OR SCISSORS, LADDER



WIGGLE WIRE

PVC DOOR COVER

1. PLACE YOUR PVC DOOR WITH THE REMOVABLE PANNEL FACING THE INSIDE OF THE POLYTUNNEL

2. ENSURE YOU HAVE ENOUGH MATERIAL TO COVER THE BOTTOM OF THE DOOR

3. WIGGLE WIRE THE TOP SECTION INTO YOUR DOOR FRAME

4. WIGGLE WIRE THE SIDES, WORK DOWN BOTH SIDES AT THE SAME TIME

5. ONCE HAPPY TRIM OFF ANY EXCESS FABRIC & WIGGLE WIRE

WE CONSTANTLY STRIVE TO IMPROVE OUR PRODUCTS  
AND SERVICES.

WE WELCOME ANY FEEDBACK ABOUT OUR BRAND  
NEW EASY BUILD.

DELIVERY

DESIGN

BUILD QUALITY

INSTRUCTIONS

SUPPORT & CUSTOMER SERVICES

PLEASE EMAIL:

[MARKETING@NPSTRUCTURES.CO.UK](mailto:MARKETING@NPSTRUCTURES.CO.UK)





## HELP & ADVICE

TEL 01282 873120

EMAIL [INFO@NPSTRUCTURES.CO.UK](mailto:INFO@NPSTRUCTURES.CO.UK)

[NORTHERNPOLYTUNNELS.CO.UK](http://NORTHERNPOLYTUNNELS.CO.UK)